



## FY25 4ID Pre-Ranger Program Sponsor Information



***NOT FOR THE WEAK OR FAINTHEARTED  
RANGERS LEAD THE WAY!***

### Reporting Information:

**Students will report with their sponsors to BLDG 9474 NLT 0600 on Day 0 (Monday) in the Army Physical Fitness Uniform (no unit attire).**

**Below are the items Students must bring when they report:**

- DA Form 4187 signed by your Company Commander (Example on Page 3)
- SGLV
- DD93
- STP
- Airborne Certification / Orders (if applicable)
- Ranger Physical completed within 18 months of desired Ranger School date
- BAS Recoupment Memo (On our website)
- Ranger School Packing List:  
<https://www.moore.army.mil/Infantry/ARTB/Student-Information/Packing.html>
- Company Commander Validation Memo; Example Template found here: <https://www.moore.army.mil/Infantry/ARTB/Student-Information/Reporting.html>
- 4ID Pre-Ranger Program Enrollment Form
- Female Students must bring a pregnancy test

**Sponsor will bring sterile M4 and Night Optical Device (NODs) to BLDG 9474 no later than 1300 on Day 0**

**\*\*Non 4ID Soldiers will be provided these items\*\***



## 4ID Pre-Ranger BIG 5 EVENT STANDARDS

The mission of the 4<sup>th</sup> ID Pre Ranger Program is to teach, coach, mentor, and prepare Soldiers to succeed at Ranger School. In order to be selected to attend Ranger School, you must meet the following minimum criteria:

- RPA (49 Push-ups, 59 Sit-ups, 5 mile run in 40 minutes or less, six chin ups)
- CWSA (15 meter swim in OCP and boots, and perform an equipment ditch while in the water)
- Ranger Tactical Tasks
- Land Navigation (4 out of 5 points in 5 hours or less)
- 12 mile foot march in 3 hours (6 mile mark by 1 hour 31 minutes and 30 seconds, 8 mile mark by 2 hours and 1 minute, 10 mile mark by 2 hours and 30 minutes or less). These standards are in line with the current standards at 4<sup>th</sup> Ranger Training Brigade, Ft. Moore, GA.

**SM DOES NOT NEED A SHAVED HEAD TO ATTEND 4ID's PRE-RANGER**

If you have any questions, please refer to the information posted on the 4ID Pre-Ranger Page:

[4ID Pre-Ranger Program :: Fort Carson \(army.mil\)](#)

Alternatively, you may contact the 4ID Pre-Ranger Cadre via email at [4ID-PRP@army.mil](mailto:4ID-PRP@army.mil) or by phone at (719) 503-0786.

**NCOIC MSG Williams, Jeffrey**

Email: [4ID-PRP@ARMY.MIL](mailto:4ID-PRP@ARMY.MIL) | Office Number: (719) 503-0786

**PERSONNEL ACTION**

For use of this form, see DA PAM 600-8; the proponent is the DCS, G-1.

**PRIVACY ACT STATEMENT****AUTHORITY:** 10 U.S.C. 7013, Secretary of the Army; DA PAM 600-8, Military Human Resources Management Administrative Procedures.**PRINCIPAL****PURPOSE:** To request or record personnel actions for or by Soldiers in accordance with DA PAM 600-8.**NOTE:** For additional information see the System of Records Notice A0600-8-104 AHRC.<https://dpclid.defense.gov/Portals/49/Documents/Privacy/SORNs/Army/A006-8-104-AHRC.pdf>**ROUTINE USE(S):** There are no specific routine uses anticipated for this form; however it may be subject to a number of proper and necessary routine uses identified in the system of records notice(s) specified in the purpose statement above.**DISCLOSURE:** Voluntary, however, failure to impart pertinent information may result in a delay or error in processing the request for personnel action.**SECTION I - PERSONAL IDENTIFICATION**

1. THRU (Include ZIP Code)	2. TO (Include ZIP Code) DPTM-IMT DA FORMAL SCHOOLS FORT CARSON, CO 80913	3. FROM (Include ZIP Code) Commander UNIT FORT CARSON, CO 80913
4. NAME (Last, First, MI) Snuffy, Joe, T	5. GRADE OR RANK / PMOS / AOC E-3 / PFC / 11B10	6. DOD ID NUMBER

**SECTION II - DUTY STATUS CHANGE (AR 600-8-6)**7. The above Soldier's duty status is changed from \_\_\_\_\_ to \_\_\_\_\_  
\_\_\_\_\_ effective \_\_\_\_\_ hours, \_\_\_\_\_**SECTION III - REQUEST FOR PERSONNEL ACTION**

8. I request the following action: (Check as appropriate)

<input type="checkbox"/> Service School (Enl only)	<input type="checkbox"/> Special Forces Training/Assignment	<input type="checkbox"/> Identification Card
<input type="checkbox"/> ROTC or Reserve Component Duty	<input type="checkbox"/> On-the-Job Training (Enl only)	<input type="checkbox"/> Identification Tags
<input type="checkbox"/> Volunteering For Oversea Service	<input type="checkbox"/> Retesting in Army Personnel Tests	<input type="checkbox"/> Separate Rations
<input checked="" type="checkbox"/> Ranger Training	<input type="checkbox"/> Reassignment Married Army Couples	<input type="checkbox"/> Leave - Excess/Advance/Outside CONUS
<input type="checkbox"/> Reassignment Extreme Family Problems	<input type="checkbox"/> Reclassification	<input type="checkbox"/> Change of Name/SSN/DOB
<input type="checkbox"/> Exchange Reassignment (Enl only)	<input type="checkbox"/> Officer Candidate School	<input type="checkbox"/> Other (Specify):
<input type="checkbox"/> Airborne Training	<input type="checkbox"/> Asgmt of Pers with Exceptional Family Members	

9. SIGNATURE OF SOLDIER (When required)	10. DATE (YYYYMMDD)
---	---------------------

**SECTION IV - REMARKS (Applies to Sections II, III, and V)**

I understand that if I do not have sufficient time remaining in service to meet the obligation requirements, I will be required to reenlist or extend my current enlistment IA W AR 601-280 and AR 6 I 4-200, upon notification of acceptance for this training.

1. Above individual has applied for attendance at 4ID Pre Ranger & FBGA, School Code:07I, Course #2E-SI5S-5R/0 I 1-SQIV-G
2. 1st Choice Pre Ranger CL# 001-25 Start Date: 16 SEP 24; 2nd choice Pre Ranger CL 002-25 Start Date: 14 OCT 24; Ranger School 1st Choice: CL# 001-25 Start date: 06 OCT 24; Ranger School 2nd Choice CL# 002-25 Start Date 03 NOV 25
3. Current Duty Position: Rifleman MOS: 11B
4. Security Clearance: Secret, Unit UIC:
5. PCS: YYYYMMDD, ETS: YYYYMMDD
6. PULHES: 111111, ACFT: YYYYMMDD, Score: 600
7. Does the Soldier have a current Government Travel Card? YES
8. Mode of Transportation: AIRLINE / CHARTER BUS
9. SM Phone number and email: (123) 456-7899 joe.t.snuffy.mil@army.mil.
10. SSN \_\_\_\_\_

**SECTION V - CERTIFICATION / APPROVAL / DISAPPROVAL**

11. I certify that the duty status change (Section II) or that the request for personnel action (Section III) contained herein - <input type="checkbox"/> HAS BEEN VERIFIED <input type="checkbox"/> RECOMMEND APPROVAL <input type="checkbox"/> RECOMMEND DISAPPROVAL <input type="checkbox"/> IS APPROVED <input type="checkbox"/> IS DISAPPROVED		
12. COMMANDER / AUTHORIZED REPRESENTATIVE	13. SIGNATURE	14. DATE (YYYYMMDD)

**ADDENDUM - RECOMMENDATIONS FOR APPROVAL / DISAPPROVAL**

15. NAME (Last, First, MI)					16. DOD ID NUMBER				
<b>AUTHORITY</b>		a. TO				b. FROM			
c. ACTION: <input type="checkbox"/> APPROVED <input type="checkbox"/> DISAPPROVED                      RECOMMEND: <input type="checkbox"/> APPROVAL <input type="checkbox"/> DISAPPROVAL									
d. NAME (Last, First, MI)				e. RANK				f. DATE (YYYYMMDD)	
g. TITLE / POSITION						h. SIGNATURE			
i. COMMENTS									

<b>AUTHORITY</b>		a. TO				b. FROM			
c. ACTION: <input type="checkbox"/> APPROVED <input type="checkbox"/> DISAPPROVED                      RECOMMEND: <input type="checkbox"/> APPROVAL <input type="checkbox"/> DISAPPROVAL									
d. NAME (Last, First, MI)				e. RANK				f. DATE (YYYYMMDD)	
g. TITLE / POSITION						h. SIGNATURE			
i. COMMENTS									

<b>AUTHORITY</b>		a. TO				b. FROM			
c. ACTION: <input type="checkbox"/> APPROVED <input type="checkbox"/> DISAPPROVED                      RECOMMEND: <input type="checkbox"/> APPROVAL <input type="checkbox"/> DISAPPROVAL									
d. NAME (Last, First, MI)				e. RANK				f. DATE (YYYYMMDD)	
g. TITLE / POSITION						h. SIGNATURE			
i. COMMENTS									

<b>AUTHORITY</b>		a. TO				b. FROM			
c. ACTION: <input type="checkbox"/> APPROVED <input type="checkbox"/> DISAPPROVED                      RECOMMEND: <input type="checkbox"/> APPROVAL <input type="checkbox"/> DISAPPROVAL									
d. NAME (Last, First, MI)				e. RANK				f. DATE (YYYYMMDD)	
g. TITLE / POSITION						h. SIGNATURE			
i. COMMENTS									



**4ID PRE-RANGER PROGRAM**  
**ENROLLMENT FORM**  
**NOT FOR THE WEAK OR FAINTHEARTED**  
**RANGERS LEAD THE WAY!**



NAME(LAST, FIRST MI.):	RANK:	LAST FOUR OF SSN:	DOD ID NUMBER:
UNIT(CO, BN, BCT):	CELL PHONE NUMBER:	TRAINING ROOM NUMBER:	MOS:
RPA PASS?      DATE OF RPA: YES/ NO    (IF NO WHAT EVENT?)	HRP REPS:      PLANK:	5 MILE TIME:	PU REPS:      AGE:

1. DOES SOLDIER MEET HEIGHT AND WEIGHT STANDARDS <b>IAW AR 600-9?</b>	YES	NO
2. DOES SOLDIER HAVE A COMPLETE AIRBORNE RANGER PHYSICAL WITHIN 18 MONTHS OF CLASS START DATE? (IE DD FORM 2807/2808 WITH DOCTOR AND DENTIST SIGNATURE; CURRENT DD FORM 2216E (AUDIOGRAM); PRINTED COPY OF REQUIRED LABS; RADIOLOGY REPORTS; AND EKG IF APPLICABLE.) <b><u>REQUIRED FOR COURSE ATTENDANCE</u></b>	YES	NO
3. HAS SOLDIER COMPLETED PHA WITHIN 30 DAYS OF ATTENDANCE?	YES	NO
4. SOLDIER HAS A SPONSOR ASSIGNED TO THEM <b><u>THAT WILL BE AVAILABLE WHILE SOLDIER IS IN ATTENDANCE?</u></b> <b><u>(SPONSERSHIP NEEDS TO BE COMPLETED AND IN HAND.)</u></b>	YES	NO
5. DOES THE SOLDIER HAVE A STABILIZATION 4187 FOR 1 YEAR UPON COMPLETION OF RANGER SCHOOL? (INCLUDED IN PACKET.)	YES	NO
6. SOLDIER HAS COMPLETED RTT CHECKLIST, BAS RECOUPMENT MEMO, AND A COMMANDERS MEMO? <b><u>(COMMANDERS MEMO REQUIRED FOR RANGER SCHOOL)</u></b>	YES	NO
7. DOES THE SOLDIER HAVE A SIGNED 4187 FOR <b><u>RANGER SCHOOL?</u></b>	YES	NO
8. DOES SOLDIER HAVE THE <b><u>COMPLETE</u></b> RANGER SCHOOL PACKING LIST?	YES	NO
9. DOES SOLDIER HAVE AN ACTIVE GOVERNMENT TRAVEL CARD?	YES	NO
10. DOES SOLDIER HAVE A VALID CAC AND <b><u>TWO</u></b> SETS OF IDENTIFICATION TAGS? (MEDICAL TAGS MUST BE PRESENT IF APPLICABLE)	YES	NO
11. DOES SOLDIER HAVE <b><u>TWO</u></b> SETS OF <b><u>MILITARY ISSUED</u></b> EYE GLASSES WITH RATAINING STRAPS? (IF APPLICABLE)	YES	NO
12. HAS SOLDIER COMPLETED AN RPFT WITHIN 30 DAYS OF ATTENDING THE COURSE?	YES	NO
13. HAS SOLDIER COMPLETED 12 FOOT MARCH WITHIN 3 HOURS WITHIN 90 DAYS OF ATTENDING THE COURSE?	YES	NO
14. IS SOLDIER A WEAK SWIMMER?	YES	NO
15. DOES SOLDIER HAVE A PROFILE? (IF SO FOR WHAT?):	YES	NO
16. DOES SOLDIER TAKE MEDICATION? (IF SO WHAT?)	YES	NO
17. DOES SOLDIER HAVE ALLERGIES? (IF SO, WHAT IS SOLDIER ALLERGIC TO?)	YES	NO

BY SIGNING THIS FORM YOU CERTIFY THAT ALL INFORMATION IS CORRECT, YOU HAVE COMPLETED ALL TASKS REQUIRED FOR RANGER SCHOOL, AND YOU ARE VOLUNTEERING TO ATTEND RANGER SCHOOL UPON SUCCESSFUL COMPLETION OF THE PROGRAM.

SOLDIERS NAME: (PRINTED)	SOLDIER SIGNATURE:	DATE:
--------------------------	--------------------	-------

**COMMANDER'S CONTACT INFORMATION**

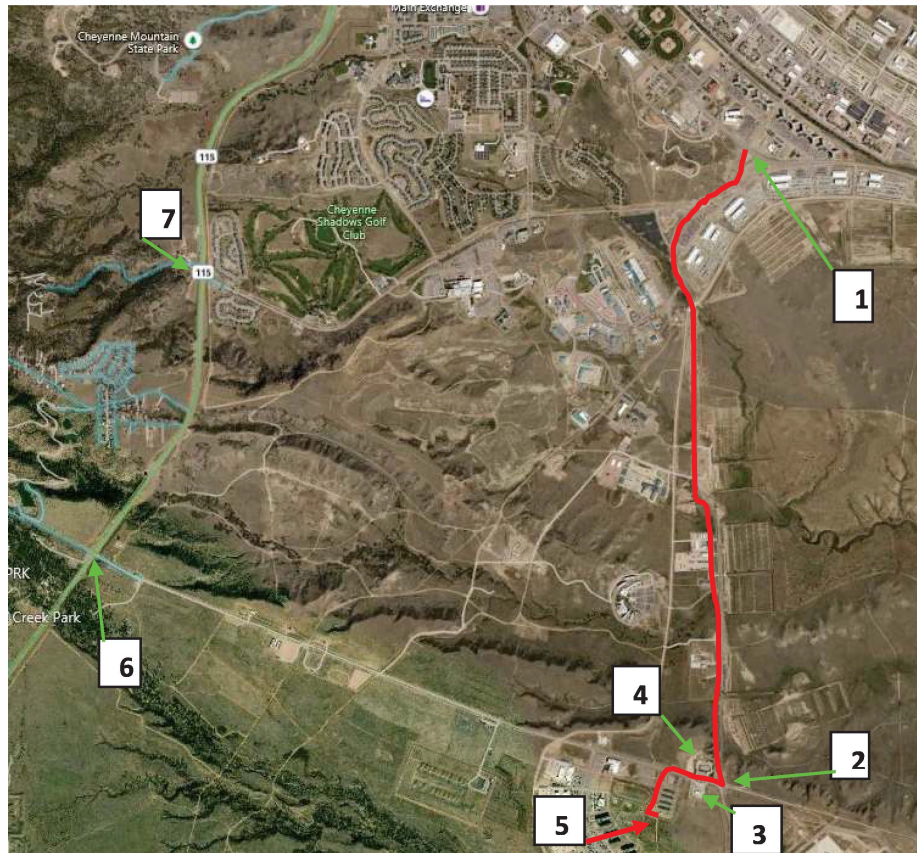
OFFICE PHONE NUMBER:	CELL:	EMAIL:
NAME: (PRINTED)	SIGNATURE: (BY SIGNING THIS YOU ARE VERIFYING SOLDIERS IS READY TO ATTEND RANGER SCHOOL)	DATE:

**1SG / SENIOR NCO CONTACT INFORMATION**

OFFICE PHONE NUMBER:	CELL:	EMAIL:
NAME: (PRINTED)	SIGNATURE: (BY SIGNING THIS YOU ARE VERIFYING SOLDIERS IS READY TO ATTEND RANGER SCHOOL)	DATE:



## Strip Map to BLDG 9474



From the intersection of Specker and Titus, travel south/south-west on Titus road, follow the split to the south on Butts Road. Travel south on Butts road till the traffic circle, turn west out of the traffic circle on Wilderness Road. Turn South in to the cyclone fence compound in vicinity of the brown signs for 2<sup>ND</sup> BDE EBH and 4<sup>th</sup> ID Pre Ranger Program.

- |                                   |                    |               |
|-----------------------------------|--------------------|---------------|
| 1. Titus and Specker Intersection | 4. Range Ops       | 7. Titus Gate |
| 2. Traffic Circle                 | 5. BLDG 9474 PRP   |               |
| 3. Shoppette                      | 6. Wilderness Gate |               |

## Enclosure 1

Ranger Task Training (RTT)	
Individual Task Number	Task Title
	<b>RTT #1: Maintain an M249 Machine Gun</b>
071-COM-4025	Maintain an M249 Machine Gun
	<b>RTT #2: Clear, Load, Reduce Stoppage, Unload, and Clear an M249 Machine Gun</b>
071-COM-4027	Load an M249 Machine Gun
071-COM-4028	Unload an M249 Machine Gun
071-COM-4029	Correct Malfunctions of an M249 Machine Gun
	<b>RTT #3: Maintain an M240B Machine Gun</b>
171-122-1012	Perform Operator Maintenance on an M240 Series Machine Gun
	<b>RTT #4: Clear Load, Reduce Stoppage, Unload, and Clear an M240B Machine Gun</b>
071-025-0003	Load an M240B/M240L Machine Gun
071-025-0004	Unload an M240B/M240L Machine Gun
071-025-0005	Correct Malfunctions of an M240B/M240L Machine Gun
	<b>RTT #5: Employ/Recover an M18A1 Claymore Mine (Non-Electric Initiation)</b>
071-325-4427	Employ an M18A1 Claymore Mine
071-325-4426	Recover an M18A1 Claymore Mine
	<b>RTT #6: Communicate by Tactical radio</b>
171-300-0063	Operate the Single Channel Ground and Airborne Radio System (SINCGARS) Advanced System Improvement Program (ASIP) Radio
	<b>RTT #7: Communicate by MBITR</b>
113-100-1138	Operate Multi-band Inter/Intra Team Radio (MBITR)
Land Navigation	
Individual Task Number	Task Title
071-COM-1006	Navigate from One Point on the Ground to another Point while Dismounted
071-329-1009	Convert Azimuths
071-329-1004	Determine the Elevation of a Point on the Ground Using a Map
071-329-1014	Locate an Unknown Point on a Map and on the Ground by Intersection
071-329-1015	Locate an Unknown Point on a Map and on the Ground by Resection
071-329-1018	Determine Direction without a Compass
071-COM-1008	Measure Distance on a Map
071-COM-1011	Orient a Map Using a Lensatic Compass
RPA	
Push-Ups	Minimum 49 in 2 minutes
Sit-Ups	Minimum 59 in 2 minutes
5 Mile Run	Maximum Time of 40 minutes
Chin-Ups	Minimum 6, Palms Facing Inward
Combat Water Survival Assessment	
40' Log Walk Rope Drop	(capable)
75' Suspension Traverse	(capable)
Equipment Removal/ 15m Swim	Remove FLC/Weapon, swim 15m with uniform(ACU/OCP) and boots (verified)
Foot March	
Foot March 12 miles with rucksack weighing a minimum of 35lbs (dry weight) and Ranger's individual load in 3hrs or less	





### **Maintain an M249**

#### **071-COM-4025-Maintain an M249 Machine Gun**

#### **071-COM-4026-Perform a Function Check on an M249 Machine Gun**

**Task:** Clear, Disassemble, Assemble, and Perform a Functions Check on an M249 Machine Gun.

**Condition:** You are a member of a team that has just returned from a mission and you have been directed to conduct maintenance on your Machine Gun.

**Standard:** Correctly clear and completely disassemble the M249 Machine Gun, matching the groups with the correct nomenclature within three minutes. Correctly assemble and perform a functions check on the M249 Machine Gun within three minutes. All tasks will be performed in sequence.

**Requirements:** An M249, on a flat surface, with the bipod legs extended. Starting configuration for weapon will be: free of ammunition, on FIRE, with bolt forward. Basic maintenance tools. Target/safe direction for Candidate to point weapon. Material/flat surface that will prevent Candidate from losing parts to weapon with appropriate nomenclature group labels. Photos of parts with nomenclature labels will be available in training area. Use separate weapon for Part One and Two, ensuring to have enough for your projected number of candidates. As of the date of this publication, ITASKs are not up to date with the latest procedures and a new TM has not been published. TC that replaced the FM no longer covers these procedures. These steps reflect forthcoming changes to the TM from TACOM.

#### **Clear and Disassemble:**

*\*Candidate will start from a standing position with the weapon resting on the flat surface.*

1. Clear the weapon.
  - a. Point weapon in a safe direction. Ensure safety is on FIRE before moving bolt/operating rod assembly.
  - b. Pull and hold, with palm up, cocking handle with right hand to rear, ensuring bolt locks completely to rear.
  - c. While holding the cocking handle to the rear (with no tension on the bolt), place the safety to SAFE.
  - d. Push the cocking handle assembly to the fully forward and locked position.
  - e. Push in feed cover latches, look in a safe direction, raise feed cover, and conduct a five-point safety check for brass/links/ammunition. Check feed pawl assembly under cover and feed tray. Lift feed tray and inspect chamber. Check between face of bolt and chamber as well as under bolt/operating rod assembly. Check magazine well. Lower the feed tray and close the feed cover, making sure it locks shut.
  - f. Pull and hold, with palm up, the cocking handle assembly with the right hand to the rear.
  - g. While holding the cocking handle to the rear (with no tension on the bolt), place the safety to FIRE.
  - h. While fully depressing the trigger, ease the bolt forward to close and lock. Release the trigger.
  - i. Attempt to place the safety to SAFE; safety must not be able to be moved to SAFE.
2. Disassemble weapon into the following groups, ensuring all parts are on the correct nomenclature labels.
  - a. Driving spring and return rod transfer mechanism assembly. Separated.
  - b. Bolt, slide, and piston assemblies. Separated.
  - c. Heat shield, gas regulator, and barrel.
  - d. Handguard and receiver assembly.
  - e. Buttstock and buffer assembly.





- f. Trigger mechanism assembly.
- g. Gas cylinder.
- h. Bipod.

*Time will stop when the Candidate returns to the standing position with all parts of the weapon on the flat surface.*

**Assemble and Perform a Functions Check:**

*\*Candidate will start from the last position in the previous task.*

1. Assemble the weapon.
2. Perform a functions check. Ensure the safety is on FIRE before moving the bolt/operating rod assembly.
  - a. Pull and hold, with palm up, cocking handle with right hand to rear, ensuring bolt locks completely to rear.
  - b. While holding to rear, with no tension on bolt, place on SAFE and depress trigger. Weapon should not fire.
  - c. While holding the cocking handle to the rear (with no tension on the bolt), place the safety to FIRE and depress the trigger. Ease the bolt forward to close and lock. Release the trigger.
  - d. Attempt to place on SAFE; safety must not be able to be moved to SAFE. Close ejection port cover.

*Time will stop when the Candidate returns to the standing position with the weapon on the flat surface.*



### **Operate an M249**

**071-COM-4025-Maintain an M249 Machine Gun 071-COM-4027-Load an M249 Machine Gun**

**071-COM-4029-Correct Malfunctions of an M249 Machine Gun 071-COM-4028-Unload an M249 Machine Gun**

**Task:** Clear, load, fire until a stoppage occurs, perform immediate action, expend remaining ammunition, unload, and clear an M249 Machine Gun.

**Condition:** You are a member of a team conducting combat operations. You have a stoppage while engaging targets with your machine gun.

**Standard:** Correctly perform all steps, in sequence, within 30 seconds.

**Requirements:** An M249 Machine Gun and blank adaptor with blank ammunition; at least three good blank rounds, followed by one expended round, and three more good rounds. Starting configuration for the weapon will be: free of ammunition, on FIRE, with the bolt forward. A target/safe direction for the Candidate to point the weapon. The weapon can alternatively be mounted on a vehicle or other type of fighting position. Hearing protection (part of the EIB uniform) must be worn when firing. As of the date of this publication, the ITASKs are not up to date with the latest procedures and the new TM has not been published yet. The TC that replaced the FM no longer covers these procedures. These performance measures reflect the forthcoming changes to the TM as established byTACOM.

*\*Candidate will start in the prone position not touching the weapon.*

1. Clear the weapon.
  - a. Point weapon in a safe direction. Ensure safety is on FIRE before moving bolt/operating rod assembly.
  - b. Pull and hold, with palm up, cocking handle with right hand to rear, ensuring bolt locks completely to rear.
  - c. While holding the cocking handle to the rear (with no tension on the bolt), place the safety to SAFE.
  - d. Push the cocking handle assembly to the fully forward and locked position.
  - e. Push in the feed cover latches, look in a safe direction, raise the feed cover, and conduct a five-point safety check for brass, links, or ammunition. Check the feed pawl assembly under the cover. Check the feed tray. Lift the feed tray and inspect the chamber. Check the space between the face of the bolt and the chamber as well as the space under the bolt/operating rod assembly. Check the magazine well. Lower the feed tray.
2. Load the weapon.
  - a. Place link belt on feed tray with the first round against the cartridge stop with the tips of the rounds pointing towards the barrel. Tilt the weapon to the right and/or hold the ammunition belt in place if necessary.
  - b. Close the feed cover. Ensure the latches lock into place. Make sure rounds do not move away from cartridge stop during closing and latching of cover.
3. Place the weapon on FIRE and engage your target.
4. Take immediate action to correct a malfunction. Weapon remains on shoulder while performing immediate action.
  - a. Pull and hold, with palm up, cocking handle with right hand to rear, ensuring bolt locks completely to



rear.

- b. Observe ejection port to see if a cartridge case/belt link/round ejects. If not, place on SAFE while holding cocking handle to rear (with no tension on bolt). Return cocking handle to forward and locked position and proceed to clear weapon. If a cartridge/belt link/round ejects, push the cocking handle forward.
- c. Squeeze the trigger and continue mission. Proceed to clear the weapon if it does not fire.

5. Unload and clear the weapon.

- a. Point weapon in a safe direction.
- b. If the bolt is forward, ensure the safety is on FIRE before moving the bolt/operating rod assembly. If the bolt is fully locked to the rear, ensure the safety is on SAFE and proceed to step f.
- c. Pull and hold, with palm up, cocking handle with right hand to rear, ensuring bolt locks completely to rear.
- d. While holding the cocking handle to the rear (with no tension on the bolt), place the safety to SAFE.
- e. Return the cocking handle assembly to the fully forward and locked position.
- f. Push in feed cover latches, look in a safe direction, raise feed cover, and conduct a five-point safety check, per step 1e above. Lower the feed tray and close the feed cover, making sure it locks shut.
- g. Pull and hold, with palm up, the cocking handle assembly with the right hand to the rear.
- h. While holding the cocking handle to the rear (with no tension on the bolt), place the safety to FIRE.
- i. While depressing trigger, ease bolt forward to close and lock. Release trigger. Close ejection port cover.



### **Maintain an M240**

#### **071-025-0001-Maintain an M240B Machine Gun**

#### **071-025-0002-Perform a Function Check on an M240B Machine Gun**

**Task:** Clear, Disassemble, Assemble, and Perform a Functions Check on an M240 Machine Gun.

**Condition:** You are a member of a team that has just returned from a mission and you have been directed to conduct maintenance on your machine gun.

**Standard:** Correctly clear and disassemble the M240 Machine Gun, matching the parts with the correct nomenclature labels within three minutes. Correctly assemble and perform a functions check on the M240 Machine Gun within three minutes. All tasks will be performed in sequence.

**Requirements:** An M240 Machine Gun, on a flat surface, with the bipod legs extended. Starting configuration for the weapon will be: free of ammunition, on FIRE, with the bolt forward. Basic maintenance tools. A target/safe direction for the Candidate to point the weapon. Material/flat surface that will prevent Candidate from losing parts to weapon. An area for Candidate to place weapons parts with appropriate group nomenclature labels. Photos of parts with nomenclature labels will be available in the training area. Use separate weapon systems for Part One and Two, ensuring to have enough for your projected number of candidates. As of the date of this publication, the ITASKs are not up to date with the latest procedures and a new TM has not been published. The TC that replaced the FM no longer covers these procedures. These performance measures reflect the forthcoming changes to the TM as established by TACOM.

#### **Clear and Disassemble:**

*\*Candidate will start from a standing position with the weapon resting on the flat surface.*

1. Clear the weapon.
  - a. Point weapon in a safe direction. Ensure safety is on FIRE before moving the bolt/operating rod assembly.
  - b. Pull and hold, with palm up, cocking handle with right hand to rear, ensuring bolt locks completely to rear.
  - c. While holding the cocking handle to the rear (with no tension on the bolt), place the safety to SAFE.
  - d. Release the cocking handle assembly to the fully forward and locked position.
  - e. Push in feed cover latches, look in a safe direction, raise feed cover, and conduct a four-point safety check for brass/links/ammunition. Check feed pawl assembly under cover. Check feed tray. Lift feed tray and inspect chamber. Check between face of bolt and chamber as well as under bolt/operating rod assembly.
  - f. Lower the feed tray and close the feed cover, making sure it locks shut.
  - g. Pull and hold, with palm up, the cocking handle assembly with the right hand to the rear.
  - h. While holding the cocking handle to the rear (with no tension on the bolt), place the safety to FIRE.
  - i. While fully depressing the trigger, ease the bolt forward to close and lock. Release the trigger.
  - j. Attempt to place the safety to SAFE; safety must not be able to be moved to SAFE.
2. Disassemble the weapon into the following groups, ensuring all parts are on the correct nomenclature labels:
  - a. Buttstock and buffer assembly.



- b. Bolt and operating rod assembly.
- c. Driving spring rod assembly.
- d. Trigger housing assembly.
- e. Barrel assembly; removing heat shield.
- f. Cover assembly.
- g. Feed tray.
- h. Receiver assembly.

*Time will stop when the Candidate returns to the standing position with all parts of the weapon on the flat surface.*

**Assemble and Perform a Functions Check:**

*\*Candidate will start from the last position in the previous task.*

1. Assemble the weapon.
2. Perform a functions check, ensuring the safety is on FIRE before moving the bolt/operating rod assembly.
  - a. Pull and hold, with palm up, cocking handle with right hand to rear, ensuring bolt locks completely to rear.
  - b. While holding handle to rear, with no tension on bolt, place on SAFE and depress trigger. Weapon should not fire.
  - c. While holding the cocking handle to the rear (with no tension on the bolt), place the safety to FIRE and depress the trigger. Ease the bolt forward to close and lock. Release the trigger.
  - d. Attempt to place on SAFE; safety must not be able to be moved to SAFE. Close ejection port cover.

*Time will stop when the Candidate returns to the standing position with the weapon on the flat surface.*



### **Operate an M240**

**071-025-0001-Maintain an M240B Machine Gun**

**071-025-0003-Load an M240B Machine Gun**

**071-025-0005-Correct Malfunctions of an M240B/M240L Machine Gun**

**071-025-0004-Unload an M240B Machine Gun**

**Task:** Clear, load, fire until a stoppage occurs, perform immediate action, expend remaining ammunition, unload, and clear an M240 Machine Gun.

**Condition:** You are a member of a team conducting combat operations. You have a stoppage while engaging targets with your machine gun.

**Standard:** Correctly perform all steps, in sequence, within 30 seconds.

**Requirements:** An M240 Machine Gun and blank adaptor with blank ammunition; at least three good blank rounds, followed by one expended/dummy round, and three more good rounds. Starting configuration for the weapon will be: free of ammunition, on FIRE, with the bolt forward. A target/safe direction for the Candidate to point the weapon. The weapon can alternatively be mounted on a vehicle or other type of fighting position. Hearing protection (part of the EIB uniform) must be worn when firing. As of the date of this publication, the ITASKs are not up to date with the latest procedures and the new TM has not been published yet. The TC that replaced the FM no longer covers these procedures. These performance measures reflect the forthcoming changes to the TM as established by TACOM.

*\*Candidate will start in the prone position not touching the weapon.*

1. Clear the weapon.
  - a. Point weapon in a safe direction. Ensure safety is on FIRE before moving the bolt/operating rod assembly.
  - b. Pull and hold, with palm up, cocking handle with right hand to rear, ensuring bolt locks completely to rear.
  - c. While holding the cocking handle to the rear (with no tension on the bolt), place the safety to SAFE.
  - d. Push the cocking handle assembly to the fully forward and locked position.
  - e. Push in feed cover latches, look in a safe direction, raise feed cover, and conduct a four-point safety check for brass, links, or ammunition. Check feed pawl assembly under cover. Check feed tray. Lift feed tray and inspect chamber. Check between face of bolt and chamber as well as under bolt/operating rod assembly.
  - f. Lower the feed tray.
2. Load the weapon.
  - a. Place link belt on feed tray with the first round against the cartridge stop with the tips of the rounds pointing towards the barrel. Tilt the weapon to the right and/or hold the ammunition belt in place if necessary.
  - b. Close feed cover, ensuring latches lock. Ensure rounds do not move from cartridge stop during closing.
3. Place the weapon on FIRE and engage your target.



4. Take immediate action to correct a malfunction. Weapon remains on shoulder while performing immediate action.

a. Pull and hold, with palm up, cocking handle with right hand to rear, ensuring bolt locks completely to rear.

b. Observe ejection port to see if a cartridge case/belt link/round ejects. If not, place on SAFE while holding cocking handle to rear (with no tension on the bolt). Return cocking handle assembly to forward and locked position and proceed to clear weapon. If something ejects, push the cocking handle forward.

c. Squeeze the trigger and continue mission. Proceed to clear the weapon if it does not fire.

5. Unload and clear the weapon.

a. Point weapon in a safe direction. If bolt is forward, ensure safety is on FIRE before moving bolt/operating rod assembly. If the bolt is fully locked to the rear, ensure the safety is on SAFE and proceed to step e.

b. Pull and hold, with palm up, cocking handle with right hand to rear, ensuring bolt locks completely to rear.

c. While holding the cocking handle to the rear (with no tension on the bolt), place the safety to SAFE.

d. Return the cocking handle assembly to the fully forward and locked position.

e. Push in the feed cover latches, look in a safe direction, raise the feed cover, and conduct a four-point safety check (per step 1e above); lower the feed tray and close the feed cover, making sure it locks shut.

f. Pull and hold, with palm up, the cocking handle assembly with the right hand to the rear.

g. While holding the cocking handle to the rear (with no tension on the bolt), place the safety to FIRE.

h. While depressing trigger, ease bolt forward to close and lock. Release trigger. Close ejection port cover.





### **M18A1 Claymore Mine (Nonelectric Initiation)**

#### **0713254427: Employ an M18A1 Claymore Munition**

#### **0713254428: Recover an M18A1 Claymore Mine NonElectric Initiation (NEI) TC 322.23**

**Task:** Employ a Claymore mine. Recover a Claymore mine.

**Condition:** You are a member of a platoon in a patrol base in a non-CBRNE environment. You have been directed to utilize a Claymore mine to enhance the perimeter defense. There is a known enemy presence.

**Standard:** Correctly employ and fire a Claymore mine, in sequence, within eight minutes. Correctly recover an unfired Claymore mine, in sequence, within five minutes.

**Station Requirements:** A training Claymore mine/munition with all basic items of inventory (Bli). One wooden stake in the ground/fixed object at the firing position 16-30 meters from mine emplacement location and another at the mine location. Sandbags, trees, or holes in the ground for Candidate to use to test the mine. A ground level target for the Candidate to aim at in front of the mine emplacement location.

#### **Emplace and Fire:**

1. Inventory the component: The shock tube assembly with M81 pull initiator and the M7 bandoleer.
2. Select a firing position that offers cover and unobstructed observation of site selected for emplacing munition.
3. Prepare the munition for employment.
  - a. Place the bandoleer on the shoulder or around the neck.
  - b. Ensure that the munition and all accessories are in the bandoleer.
  - c. Walk tactically to the desired location where the munition will be setup.
  - d. Assume a prone position. Remove the munition from the bandoleer.
  - e. Open both pairs of legs to a 45 degree angle with two legs facing front and two legs facing rear.
  - f. Ensure face of munition marked 'FRONT TOWARD ENEMY' and arrows on top point toward enemy.
  - g. Push legs about one-third of the way into ground with the munition facing in the desired direction of fire.

**Note:** *In windy areas or when legs cannot be pressed into the ground, legs should be spread as far as they will go (about 180 degrees) so that legs are to the front and rear of the mine and the mine will not tip over.*

4. Aim the munition.
  - a. Select an aiming point at ground level in front of the munition.
  - b. Position one eye about six inches to the rear of the sight.
    - (1) On a knife-edge sight, align the two edges of the sight with the aiming point.
    - (2) On slit-type peep sight, align groove of sight in line with aiming point that is two and a half meters off the ground. Aiming point should be in center of the desired area of coverage, with the bottom edge of the peep sight parallel to the ground that is to be covered with the fragment spray.
  - c. Aim the munition by aligning the two edges of the sight with the aiming point.



5. Arm the munition.
  - a. Remove the blasting cap from the shock tube assembly.
  - b. Secure the shock tube approximately one meter from the blasting cap side of the munition to a stake, a stone, gravel, a sand bag, or another available means.
  - c. Hold the blasting cap against the center of the chest with the left hand.
  - d. Encircle shock tube at base of the blasting cap with the index finger and thumb of the right hand.
  - e. While holding the right hand to the chest, extend the left hand to arm's length, allowing the shock tube to be pulled through the fingers of the right hand.
  - f. Lock the elbow and pull all slack from the shock tube.
  - g. Place the blasting cap back into the shock tube assembly until ready to arm.
  - h. At the one meter mark, fold the shock tube to create a loop with a large enough circumference to go around the chosen stake.
  - i. Twist the loop over the index and middle fingers of the right hand.
  - j. Push the loop through the circle created during previous step.
  - k. Secure shock tube to stake/stone/sandbag/etc.
  - l. Unscrew and invert the shipping plug priming adapter nearest to the stake or anchor.
  - m. Slide the slotted end of the shipping plug priming adapter onto the shock tube of the blasting cap between the crimped connections and the blasting cap.
  - n. Pull the excess shock tube through the slotted end of the adapter until the top of the blasting cap is firmly seated in the bottom portion of the shipping plug priming adapter.
  - o. Screw the adapter, with the blasting cap, into the detonator well.
  - p. Recheck the aim of the munition to ensure that the point of aim has not changed.
  - q. Unwind and camouflage the remaining shock tube while moving tactically back to the firing position.
6. Secure the shock tube to a stake or a fixed object at the firing position.
  - a. Remove the pull initiator from the shock tube assembly.
  - b. Secure the shock tube approximately one meter from the pull initiator side of the munition to a stake, a stone, gravel, a sand bag, or another available means.
    - (1) Hold the pull initiator against the center of the chest with the left hand.
    - (2) Encircle shock tube at base of pull initiator with the index finger and thumb of the right hand.
    - (3) While holding the right hand to the chest, extend the left hand to arm's length, allowing the shock tube to be pulled through the fingers of the right hand.
    - (4) Lock the elbow, and pull all slack from the shock tube.
    - (5) Place the pull initiator back into the shock tube assembly until ready to fire.
    - (6) At the one meter mark, fold the shock tube to create a loop with a large enough circumference to go around the chosen stake.
    - (7) Twist the loop over the index and middle fingers of the right hand.
    - (8) Push the loop through the circle created during previous step.
    - (9) Secure shock tube to stake/stone/sandbag/etc.
7. Fire the munition.
  - a. Seek cover.
  - b. Remove the initiator from the shock tube assembly.
  - c. Remove the safety pin (cotter pin) on the initiator and place it in the bandoleer for possible use later. Do



not hold the shock tube while firing. This can cause minor burns as the flame burns through the tube.

- d. Alert friendly personnel by announcing "CLAYMORE" twice.
- e. While holding body of the initiator with one hand, insert the index finger of the other hand into the pull ring.
- f. While holding the body of the initiator, turn the pull ring  $\frac{1}{4}$  to the right or left. Then, pull the ring sharply.

#### **Recover an Unfired Mine:**

1. Disarm the mine.
  - a. Check the initiator to ensure the safety pin is in place, if not:
    - (1) Remove the initiator safety pin from the bandoleer.
    - (2) Align the pull rod safety pin hole with the safety pin hole in the body of the initiator. While holding the body of the initiator, turn the pull ring until the safety pin hole in the pull rod aligns with the safety pin hole in the body of the initiator.
    - (3) Insert the safety pin through the body of the initiator.
    - (4) Gently spread the open ends of the safety pin, just enough to keep the safety pin from falling out.
  - b. Secure the initiator to the shock tube assembly.
2. Recover the mine.
  - a. Remove the shock tube from the stake or anchor at the firing position.
  - b. Walk tactically, wrapping shock tube around shock tube assembly, while moving toward emplaced munition.
  - c. Assume a prone position. Lay the shock tube assembly down by the stake or anchor.
  - d. Observe the munition and surrounding area to check for booby traps and tampering.
  - e. Remove the shipping plug priming adapter from the detonator well.
  - f. Remove the blasting cap and shock tube from the shipping plug priming adapter.
  - g. Place the blasting cap inside the shock tube assembly.
  - h. Invert the shipping plug priming adapter and screw the plug end of the adapter into the detonator well.
  - i. Lift the munition from its emplacement, and secure the folding legs.
  - j. Repack munition in bandoleer. Pick up shock tube assembly and remove shock tube from stake or anchor at munition emplacement site. Wrap the remaining shock tube around the shock tube assembly.
  - k. Repack the shock tube assembly with pull initiator in the bandoleer.
  - l. Move back to the firing position. Ensure that all items are packed in the bandoleer.



### Communicate by Tactical Radio

**Task:** Communicate by Tactical Radio

**Test Conditions:** You are a member of a team and are given an operational ASIP radio and an operational distant station

**Test Standards:**

1. Within 5 minutes, the Ranger sends a secure communications check in Single Channel (SC) Mode with distant station.
2. Candidate then sends 10-20 word message using proper radio procedures with 100% accuracy to distant station

**Instructions to Candidate:**

"I am (Rank and Name) and I will be your grader for Ranger Testing Station Communicate by Tactical Radio. Do you have any questions before you begin?"

"At this station, you are required to send a communications check and an 11 word message in Single Channel (SC) mode with distant station within 5 minutes with 100% accuracy

Example of word message; "Darby TOC this is Alpha 1-1 request permission to enter the net over"

Do you understand what you must do?"

(If anyone has questions, repeat the instructions but do not elaborate on what you have read.)

Pause five seconds and then say "Begin."

Allow the Ranger to proceed for 5 minutes and then say, "Stop."



Tasks: Communicate by Tactical Radio

Performance Measures:	Pass	Fail
Communicate by Tactical Radio.		
1. Obtained required SC frequencies. <ul style="list-style-type: none"> <li>• Prepare radio for Single Channel Frequencies loading.</li> <li>• Set mode to SC.</li> <li>• Set FCTN to load.</li> <li>• Set CHAN 1-3.</li> </ul> <b>Note: Provide Candidates with 3-Frequencies to load radio in 3- Channels.</b>		
2. Load SC frequencies. <ul style="list-style-type: none"> <li>• Press FREQ.</li> <li>• Press CLR.</li> <li>• Enter 5 digits SC frequencies.</li> <li>• Store SC frequencies.</li> <li>• Press STO within 7 seconds.</li> <li>• Stored Channels 1-3.</li> </ul>		
3. Prepare to Communicate. <ul style="list-style-type: none"> <li>• Set FCTN to SQ. ON.</li> <li>• Set CHAN to CHAN 1-3.</li> </ul> <b>NOTE: Provide Candidate with 1 of 3 Frequencies to call distant station.</b>		
4. Communicated with distant station with radio check. <b>NOTE: Candidate used proper radio procedures with 100% accuracy during radio check.</b>		
5. Sent 10-20 word message using proper radio procedures with 100% accuracy.		
Performed performance measure 1 within 5 minutes using proper radio procedures with 100% accuracy.		

Setting 1: -Channel 1 -Freq 81.000 -Single Channel Plain Text - Power HI - Vol 8

Setting 2: -Channel 2 -Freq 55.000 -Single Channel Plain Text - Power HI - Vol 5

Setting 3: -Channel 3 -Freq 57.900 -Single Channel Plain Text - Power MED -Vol 6



### **Communicate by MBITR**

#### **Tasks:**

1. Place MBITR into operation.
2. Load a frequency and properly enter the net.

**Test Conditions:** Given an MBITR (AN/PRC-148), antenna, hand mic, and battery.

#### **Test Standards:**

1. Properly assemble the MBITR and place into operation, correctly load frequency, and settings and enter the net within 4 minutes.

#### **Instructions to Candidate:**

"I am (Rank and Name) and I will be your grader for Ranger Testing Station Communicate by MBITR. During this phase of testing, you will be evaluated your ability to communicate using the MBITR. Do you have any questions before you begin?"

"At this station, you are required to send a communications check by requesting permission to enter the net in Single Channel (SC) mode with distant station within 4 minutes.

Example word message; "Darby TOC this is Alpha 1-1 request permission to enter the net over"

Do you understand what you must do?"

(If anyone has questions, repeat the instructions but do not elaborate on what you have read.)

Pause five seconds and then say "Begin."

Allow the Ranger to proceed for 4 minutes and then say, "Stop."



Tasks: 1. Place MBITR into operation.

2. Load a frequency and properly enter the net.

Performance Measures:	Pass	Fail
1. Place MBITR Radio into operation		
2. Load a frequency and properly enter the net.		
1. Performed start up procedures 2. Selected desired operating system to be used. 3. Manually programmed radio net information. 4. Communicated within radio net 5. Performed stopping procedures.		

Setting 1: -Channel 1 -Frequency 81.000 -Single Channel -Plain Text -Power 5 watts

Setting 2: -Channel 2 -Frequency 55.000-Single Channel -Plain Text-Power 5 watts

Setting 3: -Channel 3-Frequency 57.900-Single Channel -Plain Text-Power 5 watts





# ARTB School Physical Exam Checklist IAW AR 40-501 chap 8-12

## PASS YOUR PHYSICAL!

Check your physical exam. Do not assume it was done correctly.  
It is your responsibility to make sure all these blocks, labs, and studies are completed.

Ranger

Airborne

### ANY DEFICIENCY BELOW WILL PROHIBIT YOUR ENTRANCE INTO SCHOOL ON DAY-ZERO.

	34 or younger	35 or older	34 or younger	35 or older
<b>REPORT OF MEDICAL HISTORY DD FORM 2807-1 (3 Pages)</b>	X	X	X	X
Name and SSN completed on every page by service member	X	X	X	X
Blocks 1-29 completed by service member	X	X	X	X
Block 30 a, b & c completed by examiner	X	X	X	X
<b>REPORT OF MEDICAL EXAMINATION DD FORM 2808 (3 Pages)</b>	X	X	X	X
Name and SSN completed on every page by service member	X	X	X	X
Blocks 2-15 completed by service member	X	X	X	X
Blocks 1, 16-42, 44, 45-58, 72b, 73, 74 a & b, 77, 78, & 81 a & b completed by examiner	X	X	X	X
Exam must be dated <b>within 18 months Ranger; 5 years for Airborne</b> of course start date	X	X	X	X
Blocks 43, 83 a & b completed by dentist ( <b>Must be Category 1 or 2</b> )	X	X	X	X
Blocks 59, 61, & 63 completed by optometry ( <i>per AR 40-501, Chap 5-3g</i> )	X	X	X	X
Block 71 completed by audiology or attached DD Form 2216E ( <b>H2 or H3 Require Waiver</b> )	X	X	X	X
Physical Exam is qualified for "Airborne/Ranger Training/School" (block 74a)	X	X	X	X
MD/DO Signature (block 81 a & b if exam was completed by MD/DO) (block 84 a & b if exam was conducted by a PA)	X	X	X	X
<b>ARTB schools physical examination lab requirements (documented on DD Form 2808)</b>				
Urinalysis (block 45 a & b)	X	X	X	X
Urine HCG ( <b>females only</b> ) (block 46)	X	X		
HIV with results and test date (within 2 years) (block 49)	X	X	X	X
Urine Microscopy (block 73)	X	X		
Sickledex (Sickle Cell screening) (block 73)	X	X		
Basic Metabolic Panel (BMP) or Fasting Blood Sugar (FBS) (block 73)		X		
Complete Blood Count (CBC) or H/H (block 73)	X	X		
Women's Readiness Guideline IAW OTSG/MEDCOM Policy Memo 09-031 (Block 73)	X	X	X	X
Electrocardiogram (ECG) (block 73)		X		X
Fasting Lipid Panel (block 73)		X		
Rectal Exam with Occult Blood (block 73)		X		
<b>Additional Requirements</b>				
<b>Printed copy of ECG report</b>		X		X
<b>Printed copy of Hearing Examination (DD Form 2216E) (H2 or H3 Require Waiver)</b>	X	X	X	X
<b>Printed copy of waiver granted by ARTB Surgeon (if applicable)</b>	X	X	X	X

### COMMENTS:

1. It is highly recommended that you take this checklist to your TMC when you report for your examination.
2. Ensure your provider checks Army Regulation 40-501 **CHAPTER 5-3**, 5-4 and 2 for conditions that require a waiver.
3. If you are marked "DISQUALIFIED" for any reason, you must submit for a waiver through the ARTB Brigade Surgeon. Guidance can be found on <http://www.benning.army.mil/infantry/rtb/StudentInformation.html>.
4. **Bring a complete copy of you D02807-1 & D02808 (6 pages) and everything listed in you in your additional requirements.**
5. **Leave a copy of everything with someone who can e-mail it for you on a weekend.**
6. **If you have any questions contact 4th RTBn Peney Aid Station at (706) 544-6965.**

**DO NOT BRING ORIGINALS**

DATED: 26 FEB 2020