



4th ID PRP BIG 5 EVENT STANDARDS

Mission of the 4th ID Pre Ranger Program is to train, assess and select Soldiers to go to Ranger School. In order to be selected to attend Ranger School, You must meet the following minimum criteria RPA (49 Push-ups, 59 Sit-ups, 5 mile run in 40 minutes or less, six chin ups), CWSA(15 meter swim in OCP and boots, and perform an equipment ditch while in the water), Ranger Tactical Tasks, Land Navigation(4 out of 5 points in 5 hours or less), and a 12 mile foot march in 3 hours(meeting the following standards, 6 mile mark by 1hr 31 minutes and 30 seconds, 8 mile mark by 2 hours and 1 minute, 10 mile mark in 2 hours and 30 minutes or less). These standards are directing in line with the current standards at 4th Ranger Training Brigade, Ft. Benning, GA.

RPA STANDARDS AND EVENTS WILL CHANGE IN THE COMING MONTHS!!!

SM DOES NOT NEED A SHAVED HEAD PRIOR TO ATTENDING PRE RANGER

Encl 1. Ranger Tactical Tasks (RTT)

Encl 2. Strip Map to Compound

Encl 3. Ranger School Packing List

Encl 4. Reporting Information

Encl 5. Course Enrollment Form

Encl 6. Physical Check List

For any questions or concerns regarding anything PRP please feel free to contact the Cadre below if you have any questions.

PRP Senior TAC SSG Ruby, Conner

Email: 4ID-PRP@army.mil Office

Number: (719) 503-0786

PRP NCOIC MSG Williams, Jeffrey

Email: 4ID-PRP@ARMY.MIL Office

Number: (719) 503-0786

Enclosure 1

Ranger Task Training (RTT)	
Individual Task Number	Task Title
	RTT #1: Maintain an M249 Machine Gun
071-COM-4025	Maintain an M249 Machine Gun
	RTT #2: Clear, Load, Reduce Stoppage, Unload, and Clear an M249 Machine Gun
071-COM-4027	Load an M249 Machine Gun
071-COM-4028	Unload an M249 Machine Gun
071-COM-4029	Correct Malfunctions of an M249 Machine Gun
	RTT #3: Maintain an M240B Machine Gun
171-122-1012	Perform Operator Maintenance on an M240 Series Machine Gun
	RTT #4: Clear Load, Reduce Stoppage, Unload, and Clear an M240B Machine Gun
071-025-0003	Load an M240B/M240L Machine Gun
071-025-0004	Unload an M240B/M240L Machine Gun
071-025-0005	Correct Malfunctions of an M240B/M240L Machine Gun
	RTT #5: Employ/Recover an M18A1 Claymore Mine (Non-Electric Initiation)
071-325-4427	Employ an M18A1 Claymore Mine
071-325-4426	Recover an M18A1 Claymore Mine
	RTT #6: Communicate by Tactical radio
171-300-0063	Operate the Single Channel Ground and Airborne Radio System (SINCGARS) Advanced System Improvement Program (ASIP) Radio
	RTT #7: Communicate by MBITR
113-100-1138	Operate Multi-band Inter/Intra Team Radio (MBITR)
Land Navigation	
Individual Task Number	Task Title
071-COM-1006	Navigate from One Point on the Ground to another Point while Dismounted
071-329-1009	Convert Azimuths
071-329-1004	Determine the Elevation of a Point on the Ground Using a Map
071-329-1014	Locate an Unknown Point on a Map and on the Ground by Intersection
071-329-1015	Locate an Unknown Point on a Map and on the Ground by Resection
071-329-1018	Determine Direction without a Compass
071-COM-1008	Measure Distance on a Map
071-COM-1011	Orient a Map Using a Lensatic Compass
RANGER APFT	
Push-Ups	Minimum 49 in 2 minutes
Sit-Ups	Minimum 59 in 2 minutes
5 Mile Run	Maximum Time of 40 minutes
Chin-Ups	Minimum 6, Palms Facing Inward
Combat Water Survival Assessment	
40' Log Walk Rope Drop	(capable)
75' Suspension Traverse	(capable)
Equipment Removal / 15m Swim	Remove FLC/Weapon, swim 15m with uniform(ACU/OCP) and boots (verified)
Foot March	
Foot March 12 miles with rucksack weighing a minimum of 35lbs (dry weight) and Ranger's individual load in 3hrs or less	



Maintain an M249

071-COM-4025-Maintain an M249 Machine Gun

071-COM-4026-Perform a Function Check on an M249 Machine Gun

Task: Clear, Disassemble, Assemble, and Perform a Functions Check on an M249 Machine Gun.

Condition: You are a member of a team that has just returned from a mission and you have been directed to conduct maintenance on your Machine Gun.

Standard: Correctly clear and completely disassemble the M249 Machine Gun, matching the groups with the correct nomenclature within three minutes. Correctly assemble and perform a functions check on the M249 Machine Gun within three minutes. All tasks will be performed in sequence.

Requirements: An M249, on a flat surface, with the bipod legs extended. Starting configuration for weapon will be: free of ammunition, on FIRE, with bolt forward. Basic maintenance tools. Target/safe direction for Candidate to point weapon. Material/flat surface that will prevent Candidate from losing parts to weapon with appropriate nomenclature group labels. Photos of parts with nomenclature labels will be available in training area. Use separate weapon for Part One and Two, ensuring to have enough for your projected number of candidates. As of the date of this publication, ITASKs are not up to date with the latest procedures and a new TM has not been published. TC that replaced the FM no longer covers these procedures. These steps reflect forthcoming changes to the TM from TACOM.

Clear and Disassemble:

**Candidate will start from a standing position with the weapon resting on the flat surface.*

1. Clear the weapon.
 - a. Point weapon in a safe direction. Ensure safety is on FIRE before moving bolt/operating rod assembly.
 - b. Pull and hold, with palm up, cocking handle with right hand to rear, ensuring bolt locks completely to rear.
 - c. While holding the cocking handle to the rear (with no tension on the bolt), place the safety to SAFE.
 - d. Push the cocking handle assembly to the fully forward and locked position.
 - e. Push in feed cover latches, look in a safe direction, raise feed cover, and conduct a five-point safety check for brass/links/ammunition. Check feed pawl assembly under cover and feed tray. Lift feed tray and inspect chamber. Check between face of bolt and chamber as well as under bolt/operating rod assembly. Check magazine well. Lower the feed tray and close the feed cover, making sure it locks shut.
 - f. Pull and hold, with palm up, the cocking handle assembly with the right hand to the rear.
 - g. While holding the cocking handle to the rear (with no tension on the bolt), place the safety to FIRE.
 - h. While fully depressing the trigger, ease the bolt forward to close and lock. Release the trigger.
 - i. Attempt to place the safety to SAFE; safety must not be able to be moved to SAFE.
2. Disassemble weapon into the following groups, ensuring all parts are on the correct nomenclature labels.
 - a. Driving spring and return rod transfer mechanism assembly. Separated.
 - b. Bolt, slide, and piston assemblies. Separated.
 - c. Heat shield, gas regulator, and barrel.
 - d. Handguard and receiver assembly.
 - e. Buttstock and buffer assembly.



- f. Trigger mechanism assembly.
- g. Gas cylinder.
- h. Bipod.

Time will stop when the Candidate returns to the standing position with all parts of the weapon on the flat surface.

Assemble and Perform a Functions Check:

**Candidate will start from the last position in the previous task.*

1. Assemble the weapon.
2. Perform a functions check. Ensure the safety is on FIRE before moving the bolt/operating rod assembly.
 - a. Pull and hold, with palm up, cocking handle with right hand to rear, ensuring bolt locks completely to rear.
 - b. While holding to rear, with no tension on bolt, place on SAFE and depress trigger. Weapon should not fire.
 - c. While holding the cocking handle to the rear (with no tension on the bolt), place the safety to FIRE and depress the trigger. Ease the bolt forward to close and lock. Release the trigger.
 - d. Attempt to place on SAFE; safety must not be able to be moved to SAFE. Close ejection port cover.

Time will stop when the Candidate returns to the standing position with the weapon on the flat surface.



Operate an M249

**071-COM-4025-Maintain an M249 Machine Gun 071-COM-4027-Load an M249 Machine Gun
071-COM-4029-Correct Malfunctions of an M249 Machine Gun 071-COM-4028-Unload an M249 Machine Gun**

Task: Clear, load, fire until a stoppage occurs, perform immediate action, expend remaining ammunition, unload, and clear an M249 Machine Gun.

Condition: You are a member of a team conducting combat operations. You have a stoppage while engaging targets with your machine gun.

Standard: Correctly perform all steps, in sequence, within 30 seconds.

Requirements: An M249 Machine Gun and blank adaptor with blank ammunition; at least three good blank rounds, followed by one expended round, and three more good rounds. Starting configuration for the weapon will be: free of ammunition, on FIRE, with the bolt forward. A target/safe direction for the Candidate to point the weapon. The weapon can alternatively be mounted on a vehicle or other type of fighting position. Hearing protection (part of the EIB uniform) must be worn when firing. As of the date of this publication, the ITASKs are not up to date with the latest procedures and the new TM has not been published yet. The TC that replaced the FM no longer covers these procedures. These performance measures reflect the forthcoming changes to the TM as established by TACOM.

**Candidate will start in the prone position not touching the weapon.*

1. Clear the weapon.
 - a. Point weapon in a safe direction. Ensure safety is on FIRE before moving bolt/operating rod assembly.
 - b. Pull and hold, with palm up, cocking handle with right hand to rear, ensuring bolt locks completely to rear.
 - c. While holding the cocking handle to the rear (with no tension on the bolt), place the safety to SAFE.
 - d. Push the cocking handle assembly to the fully forward and locked position.
 - e. Push in the feed cover latches, look in a safe direction, raise the feed cover, and conduct a five-point safety check for brass, links, or ammunition. Check the feed pawl assembly under the cover. Check the feed tray. Lift the feed tray and inspect the chamber. Check the space between the face of the bolt and the chamber as well as the space under the bolt/operating rod assembly. Check the magazine well. Lower the feed tray.
2. Load the weapon.
 - a. Place link belt on feed tray with the first round against the cartridge stop with the tips of the rounds pointing towards the barrel. Tilt the weapon to the right and/or hold the ammunition belt in place if necessary.
 - b. Close the feed cover. Ensure the latches lock into place. Make sure rounds do not move away from cartridge stop during closing and latching of cover.
3. Place the weapon on FIRE and engage your target.
4. Take immediate action to correct a malfunction. Weapon remains on shoulder while performing immediate action.
 - a. Pull and hold, with palm up, cocking handle with right hand to rear, ensuring bolt locks completely to



- rear.
- b. Observe ejection port to see if a cartridge case/belt link/round ejects. If not, place on SAFE while holding cocking handle to rear (with no tension on bolt). Return cocking handle to forward and locked position and proceed to clear weapon. If a cartridge/belt link/round ejects, push the cocking handle forward.
 - c. Squeeze the trigger and continue mission. Proceed to clear the weapon if it does not fire.
5. Unload and clear the weapon.
- a. Point weapon in a safe direction.
 - b. If the bolt is forward, ensure the safety is on FIRE before moving the bolt/operating rod assembly. If the bolt is fully locked to the rear, ensure the safety is on SAFE and proceed to step f.
 - c. Pull and hold, with palm up, cocking handle with right hand to rear, ensuring bolt locks completely to rear.
 - d. While holding the cocking handle to the rear (with no tension on the bolt), place the safety to SAFE.
 - e. Return the cocking handle assembly to the fully forward and locked position.
 - f. Push in feed cover latches, look in a safe direction, raise feed cover, and conduct a five-point safety check, per step 1e above. Lower the feed tray and close the feed cover, making sure it locks shut.
 - g. Pull and hold, with palm up, the cocking handle assembly with the right hand to the rear.
 - h. While holding the cocking handle to the rear (with no tension on the bolt), place the safety to FIRE.
 - i. While depressing trigger, ease bolt forward to close and lock. Release trigger. Close ejection port cover.



Maintain an M240

071-025-0001-Maintain an M240B Machine Gun

071-025-0002-Perform a Function Check on an M240B Machine Gun

Task: Clear, Disassemble, Assemble, and Perform a Functions Check on an M240 Machine Gun.

Condition: You are a member of a team that has just returned from a mission and you have been directed to conduct maintenance on your machine gun.

Standard: Correctly clear and disassemble the M240 Machine Gun, matching the parts with the correct nomenclature labels within three minutes. Correctly assemble and perform a functions check on the M240 Machine Gun within three minutes. All tasks will be performed in sequence.

Requirements: An M240 Machine Gun, on a flat surface, with the bipod legs extended. Starting configuration for the weapon will be: free of ammunition, on FIRE, with the bolt forward. Basic maintenance tools. A target/safe direction for the Candidate to point the weapon. Material/flat surface that will prevent Candidate from losing parts to weapon. An area for Candidate to place weapons parts with appropriate group nomenclature labels. Photos of parts with nomenclature labels will be available in the training area. Use separate weapon systems for Part One and Two, ensuring to have enough for your projected number of candidates. As of the date of this publication, the ITASKs are not up to date with the latest procedures and a new TM has not been published. The TC that replaced the FM no longer covers these procedures. These performance measures reflect the forthcoming changes to the TM as established by TACOM.

Clear and Disassemble:

**Candidate will start from a standing position with the weapon resting on the flat surface.*

1. Clear the weapon.
 - a. Point weapon in a safe direction. Ensure safety is on FIRE before moving the bolt/operating rod assembly.
 - b. Pull and hold, with palm up, cocking handle with right hand to rear, ensuring bolt locks completely to rear.
 - c. While holding the cocking handle to the rear (with no tension on the bolt), place the safety to SAFE.
 - d. Release the cocking handle assembly to the fully forward and locked position.
 - e. Push in feed cover latches, look in a safe direction, raise feed cover, and conduct a four-point safety check for brass/links/ammunition. Check feed pawl assembly under cover. Check feed tray. Lift feed tray and inspect chamber. Check between face of bolt and chamber as well as under bolt/operating rod assembly.
 - f. Lower the feed tray and close the feed cover, making sure it locks shut.
 - g. Pull and hold, with palm up, the cocking handle assembly with the right hand to the rear.
 - h. While holding the cocking handle to the rear (with no tension on the bolt), place the safety to FIRE.
 - i. While fully depressing the trigger, ease the bolt forward to close and lock. Release the trigger.
 - j. Attempt to place the safety to SAFE; safety must not be able to be moved to SAFE.
2. Disassemble the weapon into the following groups, ensuring all parts are on the correct nomenclature labels:
 - a. Buttstock and buffer assembly.



- b. Bolt and operating rod assembly.
- c. Driving spring rod assembly.
- d. Trigger housing assembly.
- e. Barrel assembly; removing heat shield.
- f. Cover assembly.
- g. Feed tray.
- h. Receiver assembly.

Time will stop when the Candidate returns to the standing position with all parts of the weapon on the flat surface.

Assemble and Perform a Functions Check:

**Candidate will start from the last position in the previous task.*

- 1. Assemble the weapon.
- 2. Perform a functions check, ensuring the safety is on FIRE before moving the bolt/operating rod assembly.
 - a. Pull and hold, with palm up, cocking handle with right hand to rear, ensuring bolt locks completely to rear.
 - b. While holding handle to rear, with no tension on bolt, place on SAFE and depress trigger. Weapon should not fire.
 - c. While holding the cocking handle to the rear (with no tension on the bolt), place the safety to FIRE and depress the trigger. Ease the bolt forward to close and lock. Release the trigger.
 - d. Attempt to place on SAFE; safety must not be able to be moved to SAFE. Close ejection port cover.

Time will stop when the Candidate returns to the standing position with the weapon on the flat surface.



Operate an M240

071-025-0001-Maintain an M240B Machine Gun

071-025-0003-Load an M240B Machine Gun

071-025-0005-Correct Malfunctions of an M240B/M240L Machine Gun

071-025-0004-Unload an M240B Machine Gun

Task: Clear, load, fire until a stoppage occurs, perform immediate action, expend remaining ammunition, unload, and clear an M240 Machine Gun.

Condition: You are a member of a team conducting combat operations. You have a stoppage while engaging targets with your machine gun.

Standard: Correctly perform all steps, in sequence, within 30 seconds.

Requirements: An M240 Machine Gun and blank adaptor with blank ammunition; at least three good blank rounds, followed by one expended/dummy round, and three more good rounds. Starting configuration for the weapon will be: free of ammunition, on FIRE, with the bolt forward. A target/safe direction for the Candidate to point the weapon. The weapon can alternatively be mounted on a vehicle or other type of fighting position. Hearing protection (part of the EIB uniform) must be worn when firing. As of the date of this publication, the ITASKs are not up to date with the latest procedures and the new TM has not been published yet. The TC that replaced the FM no longer covers these procedures. These performance measures reflect the forthcoming changes to the TM as established by TACOM.

**Candidate will start in the prone position not touching the weapon.*

1. Clear the weapon.
 - a. Point weapon in a safe direction. Ensure safety is on FIRE before moving the bolt/operating rod assembly.
 - b. Pull and hold, with palm up, cocking handle with right hand to rear, ensuring bolt locks completely to rear.
 - c. While holding the cocking handle to the rear (with no tension on the bolt), place the safety to SAFE.
 - d. Push the cocking handle assembly to the fully forward and locked position.
 - e. Push in feed cover latches, look in a safe direction, raise feed cover, and conduct a four-point safety check for brass, links, or ammunition. Check feed pawl assembly under cover. Check feed tray. Lift feed tray and inspect chamber. Check between face of bolt and chamber as well as under bolt/operating rod assembly.
 - f. Lower the feed tray.
2. Load the weapon.
 - a. Place link belt on feed tray with the first round against the cartridge stop with the tips of the rounds pointing towards the barrel. Tilt the weapon to the right and/or hold the ammunition belt in place if necessary.
 - b. Close feed cover, ensuring latches lock. Ensure rounds do not move from cartridge stop during closing.
3. Place the weapon on FIRE and engage your target.



4. Take immediate action to correct a malfunction. Weapon remains on shoulder while performing immediate action.
 - a. Pull and hold, with palm up, cocking handle with right hand to rear, ensuring bolt locks completely to rear.
 - b. Observe ejection port to see if a cartridge case/belt link/round ejects. If not, place on SAFE while holding cocking handle to rear (with no tension on the bolt). Return cocking handle assembly to forward and locked position and proceed to clear weapon. If something ejects, push the cocking handle forward.
 - c. Squeeze the trigger and continue mission. Proceed to clear the weapon if it does not fire.
5. Unload and clear the weapon.
 - a. Point weapon in a safe direction. If bolt is forward, ensure safety is on FIRE before moving bolt/operating rod assembly. If the bolt is fully locked to the rear, ensure the safety is on SAFE and proceed to step e.
 - b. Pull and hold, with palm up, cocking handle with right hand to rear, ensuring bolt locks completely to rear.
 - c. While holding the cocking handle to the rear (with no tension on the bolt), place the safety to SAFE.
 - d. Return the cocking handle assembly to the fully forward and locked position.
 - e. Push in the feed cover latches, look in a safe direction, raise the feed cover, and conduct a four-point safety check (per step 1e above); lower the feed tray and close the feed cover, making sure it locks shut.
 - f. Pull and hold, with palm up, the cocking handle assembly with the right hand to the rear.
 - g. While holding the cocking handle to the rear (with no tension on the bolt), place the safety to FIRE.
 - h. While depressing trigger, ease bolt forward to close and lock. Release trigger. Close ejection port cover.



M18A1 Claymore Mine (Nonelectric Initiation)

0713254427: Employ an M18A1 Claymore Munition

0713254428: Recover an M18A1 Claymore Mine NonElectric Initiation (NEI) TC 322.23

Task: Employ a Claymore mine. Recover a Claymore mine.

Condition: You are a member of a platoon in a patrol base in a non-CBRNE environment. You have been directed to utilize a Claymore mine to enhance the perimeter defense. There is a known enemy presence.

Standard: Correctly employ and fire a Claymore mine, in sequence, within eight minutes. Correctly recover an unfired Claymore mine, in sequence, within five minutes.

Station Requirements: A training Claymore mine/munition with all basic items of inventory (BII). One wooden stake in the ground/fixed object at the firing position 16-30 meters from mine emplacement location and another at the mine location. Sandbags, trees, or holes in the ground for Candidate to use to test the mine. A ground level target for the Candidate to aim at in front of the mine emplacement location.

Emplace and Fire:

1. Inventory the component: The shock tube assembly with M81 pull initiator and the M7 bandoleer.
2. Select a firing position that offers cover and unobstructed observation of site selected for emplacing munition.
3. Prepare the munition for employment.
 - a. Place the bandoleer on the shoulder or around the neck.
 - b. Ensure that the munition and all accessories are in the bandoleer.
 - c. Walk tactically to the desired location where the munition will be setup.
 - d. Assume a prone position. Remove the munition from the bandoleer.
 - e. Open both pairs of legs to a 45 degree angle with two legs facing front and two legs facing rear.
 - f. Ensure face of munition marked 'FRONT TOWARD ENEMY' and arrows on top point toward enemy.
 - g. Push legs about one-third of the way into ground with the munition facing in the desired direction of fire.

Note: *In windy areas or when legs cannot be pressed into the ground, legs should be spread as far as they will go (about 180 degrees) so that legs are to the front and rear of the mine and the mine will not tip over.*

4. Aim the munition.
 - a. Select an aiming point at ground level in front of the munition.
 - b. Position one eye about six inches to the rear of the sight.
 - (1) On a knife-edge sight, align the two edges of the sight with the aiming point.
 - (2) On slit-type peep sight, align groove of sight in line with aiming point that is two and a half meters off the ground. Aiming point should be in center of the desired area of coverage, with the bottom edge of the peep sight parallel to the ground that is to be covered with the fragment spray.
 - c. Aim the munition by aligning the two edges of the sight with the aiming point.



5. Arm the munition.
 - a. Remove the blasting cap from the shock tube assembly.
 - b. Secure the shock tube approximately one meter from the blasting cap side of the munition to a stake, a stone, gravel, a sand bag, or another available means.
 - c. Hold the blasting cap against the center of the chest with the left hand.
 - d. Encircle shock tube at base of the blasting cap with the index finger and thumb of the right hand.
 - e. While holding the right hand to the chest, extend the left hand to arm's length, allowing the shock tube to be pulled through the fingers of the right hand.
 - f. Lock the elbow and pull all slack from the shock tube.
 - g. Place the blasting cap back into the shock tube assembly until ready to arm.
 - h. At the one meter mark, fold the shock tube to create a loop with a large enough circumference to go around the chosen stake.
 - i. Twist the loop over the index and middle fingers of the right hand.
 - j. Push the loop through the circle created during previous step.
 - k. Secure shock tube to stake/stone/sandbag/etc.
 - l. Unscrew and invert the shipping plug priming adapter nearest to the stake or anchor.
 - m. Slide the slotted end of the shipping plug priming adapter onto the shock tube of the blasting cap between the crimped connections and the blasting cap.
 - n. Pull the excess shock tube through the slotted end of the adapter until the top of the blasting cap is firmly seated in the bottom portion of the shipping plug priming adapter.
 - o. Screw the adapter, with the blasting cap, into the detonator well.
 - p. Recheck the aim of the munition to ensure that the point of aim has not changed.
 - q. Unwind and camouflage the remaining shock tube while moving tactically back to the firing position.
6. Secure the shock tube to a stake or a fixed object at the firing position.
 - a. Remove the pull initiator from the shock tube assembly.
 - b. Secure the shock tube approximately one meter from the pull initiator side of the munition to a stake, a stone, gravel, a sand bag, or another available means.
 - (1) Hold the pull initiator against the center of the chest with the left hand.
 - (2) Encircle shock tube at base of pull initiator with the index finger and thumb of the right hand.
 - (3) While holding the right hand to the chest, extend the left hand to arm's length, allowing the shock tube to be pulled through the fingers of the right hand.
 - (4) Lock the elbow, and pull all slack from the shock tube.
 - (5) Place the pull initiator back into the shock tube assembly until ready to fire.
 - (6) At the one meter mark, fold the shock tube to create a loop with a large enough circumference to go around the chosen stake.
 - (7) Twist the loop over the index and middle fingers of the right hand.
 - (8) Push the loop through the circle created during previous step.
 - (9) Secure shock tube to stake/stone/sandbag/etc.
7. Fire the munition.
 - a. Seek cover.
 - b. Remove the initiator from the shock tube assembly.
 - c. Remove the safety pin (cotter pin) on the initiator and place it in the bandoleer for possible use later. Do



not hold the shock tube while firing. This can cause minor burns as the flame burns through the tube.

- d. Alert friendly personnel by announcing "CLAYMORE" twice.
- e. While holding body of the initiator with one hand, insert the index finger of the other hand into the pull ring.
- f. While holding the body of the initiator, turn the pull ring $\frac{1}{4}$ to the right or left. Then, pull the ring sharply.

Recover an Unfired Mine:

1. Disarm the mine.
 - a. Check the initiator to ensure the safety pin is in place, if not:
 - (1) Remove the initiator safety pin from the bandoleer.
 - (2) Align the pull rod safety pin hole with the safety pin hole in the body of the initiator. While holding the body of the initiator, turn the pull ring until the safety pin hole in the pull rod aligns with the safety pin hole in the body of the initiator.
 - (3) Insert the safety pin through the body of the initiator.
 - (4) Gently spread the open ends of the safety pin, just enough to keep the safety pin from falling out.
 - b. Secure the initiator to the shock tube assembly.
2. Recover the mine.
 - a. Remove the shock tube from the stake or anchor at the firing position.
 - b. Walk tactically, wrapping shock tube around shock tube assembly, while moving toward emplaced munition.
 - c. Assume a prone position. Lay the shock tube assembly down by the stake or anchor.
 - d. Observe the munition and surrounding area to check for booby traps and tampering.
 - e. Remove the shipping plug priming adapter from the detonator well.
 - f. Remove the blasting cap and shock tube from the shipping plug priming adapter.
 - g. Place the blasting cap inside the shock tube assembly.
 - h. Invert the shipping plug priming adapter and screw the plug end of the adapter into the detonator well.
 - i. Lift the munition from its emplacement, and secure the folding legs.
 - j. Repack munition in bandoleer. Pick up shock tube assembly and remove shock tube from stake or anchor at munition emplacement site. Wrap the remaining shock tube around the shock tube assembly.
 - k. Repack the shock tube assembly with pull initiator in the bandoleer.
 - l. Move back to the firing position. Ensure that all items are packed in the bandoleer.



Communicate by Tactical Radio

Task: Communicate by Tactical Radio

Test Conditions: You are a member of a team and are given an operational ASIP radio and an operational distant station

Test Standards:

1. Within 5 minutes, the Ranger sends a secure communications check in Single Channel (SC) Mode with distant station.
2. Candidate then sends 10-20 word message using proper radio procedures with 100% accuracy to distant station

Instructions to Candidate:

"I am (Rank and Name) and I will be your grader for Ranger Testing Station Communicate by Tactical Radio. Do you have any questions before you begin?"

"At this station, you are required to send a communications check and an 11 word message in Single Channel (SC) mode with distant station within 5 minutes with 100% accuracy

Example of word message; "Darby TOC this is Alpha 1-1 request permission to enter the net over"

Do you understand what you must do?"

(If anyone has questions, repeat the instructions but do not elaborate on what you have read.)

Pause five seconds and then say "Begin."

Allow the Ranger to proceed for 5 minutes and then say, "Stop."



Tasks: Communicate by Tactical Radio		
Performance Measures:	Pass	Fail
Communicate by Tactical Radio.		
1. Obtained required SC frequencies. <ul style="list-style-type: none"> • Prepare radio for Single Channel Frequencies loading. • Set mode to SC. • Set FCTN to load. • Set CHAN 1-3. <p style="color: red;">Note: Provide Candidates with 3-Frequencies to load radio in 3- Channels.</p> 2. Load SC frequencies. <ul style="list-style-type: none"> • Press FREQ. • Press CLR. • Enter 5 digits SC frequencies. • Store SC frequencies. • Press STO within 7 seconds. • Stored Channels 1-3. 3. Prepare to Communicate. <ul style="list-style-type: none"> • Set FCTN to SQ. ON. • Set CHAN to CHAN 1-3. <p style="color: red;">NOTE: Provide Candidate with 1 of 3 Frequencies to call distant station.</p> <ul style="list-style-type: none"> • Communicate in SC Mode. 4. Communicated with distant station with radio check. <p style="color: red;">NOTE: Candidate used proper radio procedures with 100% accuracy during radio check.</p> 5. Sent 10-20 word message using proper radio procedures with 100% accuracy.		
Performed performance measure 1 within 5 minutes using proper radio procedures with 100% accuracy.		

Setting 1: -Channel 1 -Freq 81.000 -Single Channel Plain Text - Power HI - Vol 8

Setting 2: -Channel 2 -Freq 55.000 -Single Channel Plain Text - Power HI - Vol 5

Setting 3: -Channel 3 -Freq 57.900 -Single Channel Plain Text - Power MED -Vol 6



Communicate by MBITR

Tasks:

1. Place MBITR into operation.
2. Load a frequency and properly enter the net.

Test Conditions: Given an MBITR (AN/PRC-148), antenna, hand mic, and battery.

Test Standards:

1. Properly assemble the MBITR and place into operation, correctly load frequency, and settings and enter the net within 4 minutes.

Instructions to Candidate:

"I am (Rank and Name) and I will be your grader for Ranger Testing Station Communicate by MBITR. During this phase of testing, you will be evaluated your ability to communicate using the MBITR. Do you have any questions before you begin?"

"At this station, you are required to send a communications check by requesting permission to enter the net in Single Channel (SC) mode with distant station within 4 minutes.

Example word message; "Darby TOC this is Alpha 1-1 request permission to enter the net over"

Do you understand what you must do?"

(If anyone has questions, repeat the instructions but do not elaborate on what you have read.)

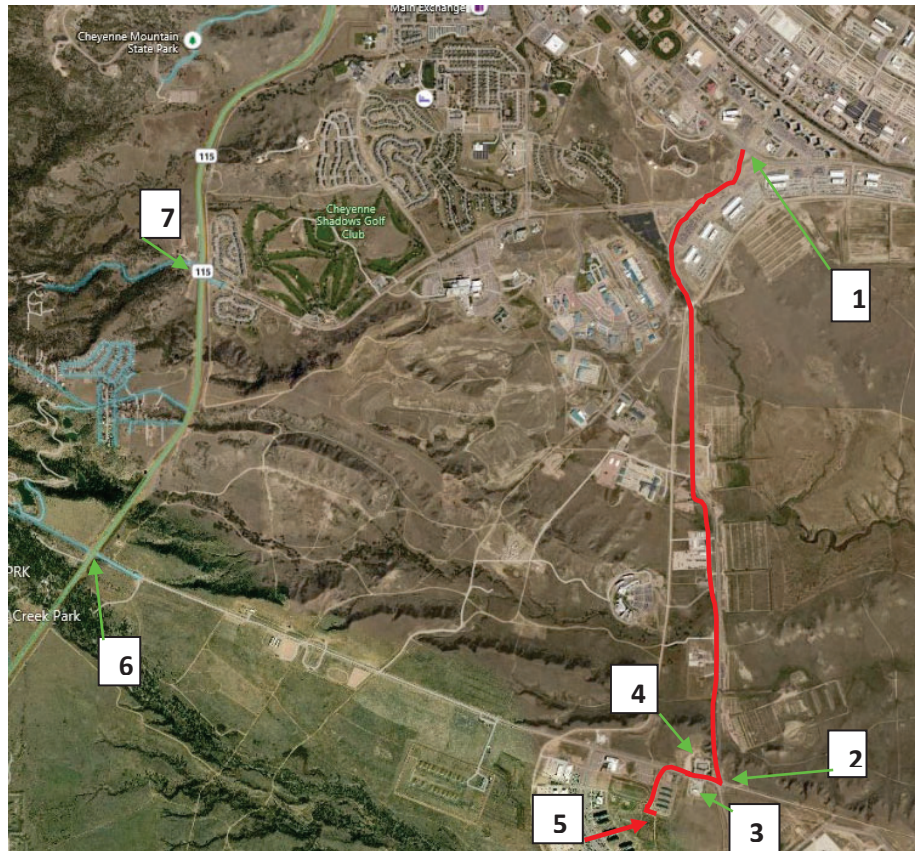
Pause five seconds and then say "Begin."

Allow the Ranger to proceed for 4 minutes and then say, "Stop."



Tasks: 1. Place MBITR into operation. 2. Load a frequency and properly enter the net.		
Performance Measures:	Pass	Fail
1. Place MBITR Radio into operation		
2. Load a frequency and properly enter the net.		
1. Performed start up procedures 2. Selected desired operating system to be used. 3. Manually programmed radio net information. 4. Communicated within radio net 5. Performed stopping procedures.		

Setting 1: -Channel 1 -Frequency 81.000 -Single Channel -Plain Text -Power 5 watts
Setting 2: -Channel 2 -Frequency 55.000 -Single Channel -Plain Text -Power 5 watts
Setting 3: -Channel 3 -Frequency 57.900 -Single Channel -Plain Text -Power 5 watts



From the intersection of Specker and Titus, travel south/south-west on Titus road, follow the split to the south on Butts Road. Travel south on Butts road till the traffic circle, turn west out of the traffic circle on Wilderness Road. Turn South in to the cyclone fence compound in vicinity of the brown signs for 2ND BDE EBH and 4th ID Pre Ranger Program.

- | | | |
|-----------------------------------|--------------------|---------------|
| 1. Titus and Specker Intersection | 4. Range Ops | 7. Titus Gate |
| 2. Traffic Circle | 5. BLDG 9474 PRP | |
| 3. Shoppette | 6. Wilderness Gate | |

AIRBORNE AND RANGER TRAINING BRIGADE				NOTES
RANGER SCHOOL PACKING LIST V.7				COMPO 1- Active Army COMPO 2- National Guard COMPO 3- United States Army Reserve
All administrative items below are ESSENTIAL missing or incomplete administrative items that will be grounds for dismissal				
	Orders to Ranger School	5 ea.		Approved ATTRS reservation with Approved DD 1610 or approved WALK ON from R7
	DD-93/SGLV	2 ea.		Must have been signed within 180 days of class report date
	SRB/ORB	2 ea.		Within 180 days of report date
	Airborne Certificate/Orders (if applicable)	2 ea.		Must be from the U.S. Army Airborne School on FBGA
	Ranger Physical Complete (DA 2808 & 2807-1) (females require pregnancy test)	1 ea.		Within 18 months from the class report date
	Commanders Letter (Signed)	2 ea.		Verifying that the Ranger has passed a RTTs, RPA, and CWSA at home station
	Packing List (Signed)	1 ea.		Signed by Sergeant or Above
	ID Card	1 ea.		Must not expire within 180 days
	ID Tags with Breakaway Chain with Medical Alert Tags or Bracelet (if required)	2 sets		DoD ID Number/ not SSN
All items below are ESSENTIAL missing any item will be grounds for dismissal from the course				
1	RUCKSACK LARGE FIELD PACK MOLLE	1 ea.	LIN: DA654J	Bring Large MOLLE Ruck if on your OCIE hand receipt to Ranger school on in-processing day Cat eyes and name tape sewn on Rucksack UCP or OCP is authorized Do not bring the Molle 4K Rucksack Fort Benning CIF will issue Large Rucksack on Day 3 to all personnel needing one
2	PACK FRAME MOLLE	1 ea.	LIN: DA650F	
3	SUSTAINMENT POUCH	2 ea.	LIN: DA655V	
4	MOLDED WAIST BELT	1 ea.	LIN: DA6517	
5	ENHANCED FRAME SHOULDER STRAPS MOLLE	1 ea.	LIN: DA652Z	
6	BUCKLE, MALE SHOULDER SUSPENSION	2 ea.	LIN: DA657S	
7	LOAD LIFTER ATTACHMENT STRAP	2 ea.	LIN: DA657W	
8	HELMET, ADVANCED COMBAT	1 ea.	LIN: H53175	Army COMPO 1 must bring from home station. Sister services, SF, 75th, Compo 2 and 3 bring if issued (must have full Suspension Pad Set), if not, CIF will issue ACH with Pads on day 3
8a	PAD SET,SUSPENSION	1 set.	LIN: DA707G	Sister services, SF, 75th Compo 2 and 3 bring if issued, if not, CIF will issue on day 3 Students Must have all 7 Suspension Pads, not having all 7 pads during the layout will result in being dismissed Students must maintain all 7 suspension Pads throughout the course or it could result in a SPOT or SOR
9	ACH BRACKET	1 ea.	LIN: PA4042	Army COMPO 1 must bring from home station. Sister services, SF, 75th, Compo 2 and 3 bring if issued, if not, CIF will issue on day 3
10	CAT-EYES BAND PASGT	1 ea.	LIN: YY1832	Per Ranger SOP
11	COVER HELMET ACH MULTICAM -OR- COVER, HELMET, CAMO PATTERN	1 ea.	LIN: C28175/C28472	Army COMPO 1,2,3 must bring from home station. Sister services, SF, 75th bring if issued, if not, CIF will issue on day 3
12	Eye Protection APEL (Clear Lens only) (w/inserts if required) (Insert do not count as eye glasses)	1 pr. Minimum		Students are encouraged to bring 1 pair for each phase, not having eye protection may result in SPOT report or SOR for Safety for not having proper PPE. Inserts do not count as eyeglasses
13	MOLLE TACTICAL ASSAULT PANEL (TAP)	1 ea.	LIN: DA659Q	Army COMPO 1, 2, 3 must bring from home station. Sister services, SF, 75th can bring their issued TAP or equivalent system (FLC). TAP must have name sewn on (per Ranger SOP) be configured to carry 6 - M4 Magazine, 2 - 1 QT canteen, 1 - Compass, all pouches may be attached to the TAP or equivalent during the inspection. Additional pouches are authorized.
14	POUCH, 1 QT CANTEEN-GENERAL	2 ea.	LIN: DA6588	
15	POUCH,HAND GRENADE	2 ea.	LIN: DA6593	
16	POUCH, M4 TWO MAGAZINE	3 ea.	LIN: DA6562	
17	POUCH, M4 THREE MAG	2 ea.	LIN: DA658H	
18	FLASH BANG GRENADE POUCH	1 ea.	LIN: DA6563	
19	Compass, Lensatic	1 ea.	NSN 6605-01-196-6971	
20	Magazine, M4	7 ea.		
21	Adapter, Firing, (M4 yellow, not M16 red)	1 ea.	NSN 1005-01-361-8208	
22	CANTEEN 1QT	2 ea.	LIN: C96536	
23	CANTEEN,WATER 2QT	1 ea.	LIN: C96399	
24	COVER CANTEEN 2QT	1 ea.	LIN: F30117	
25	CARRIER, HYDRATION SYSTEM W/BLADDER, HYDRATION S	1 ea.	LIN: DA652Q/DA651E	***Students must report on day zero with camelback full of water and will wear during in-processing***
26	GEN III - LEVEL1 LIGHTWEIGHT CW DRAWERS	2 ea.	LIN: D74128	Sister services and foreign students are authorized to wear equivalent (subdued green or tan).
27	GEN III - LEVEL2 MID-WEIGHT CW DRAWERS	2 ea.	LIN: D74812	Sister services and foreign students are authorized to wear equivalent (subdued green or tan).
28	GEN III - LEVEL1 LW CW UNDERSHIRT	2 ea.	LIN: U31387	Sister services and foreign students are authorized to wear equivalent (subdued green or tan).
29	GEN III - LEVEL2 MIDWEIGHT CW UNDERSHIRT	2 ea.	LIN: S08535	Sister services and foreign students are authorized to wear equivalent (subdued green or tan).
30	GAITER NECK	1 ea.	LIN: G39744	subdued color
31	MITTEN INSERTS, COLD WEATHER	1 ea.	LIN: M52555	students are authorized to wear issued equivalent or Civilian equivalent (See item # 130)
32	MITTEN SHELLS, COLD WEATHER	1 ea.	LIN: M53240	students are authorized to wear issued equivalent or Civilian equivalent (See item # 130)
33	GLOVES COMBAT	1 ea.	LIN: DA154H	students are authorized to wear equivalent, subdued or OCP color
34	WORK GLOVES, HEAVY DUTY	1 ea.	LIN: J68065	Leather Gloves for rappel operations, 1 full pair (1 Left, 1 Right) MUST FIT PROPERLY. Sister services and foreign students will receive from CIF
35	GLOVES, MEN'S AND WOMEN'S or GLOVES Flyers or Gloves Intermediate Cold Weather	1 min.	LIN: DA153A or G06171	Students must bring 1 set of cold weather gloves minimum and can bring as many as needed
36	OVERSHOES VINYL	1 ea.	LIN: N39848	Must fit over Boots, Cold Weather (Sister services and foreign students will receive from CIF)
37	BOOTS,INTERMEDIATE COLD WEATHER	1 ea.		Boot tag must specify 200g of thinsulate or greater or boot must have Liner. Sister services and foreign students are authorized to wear equivalent
38	PONCHO WET WEATHER or TARPAULIN	1 ea.	LIN: P17415	Sister services and foreign students will receive from CIF
39	LINER WET WEATHER PONCHO	1 ea.	LIN: L70789	Sister services and foreign students will receive from CIF
40	EXTREME WET/COLD WEATHER JACKET LEVEL VI or item # 124	1 ea.	LIN: E42924	Sister services and foreign students are authorized equivalent
41	Trousers Wet Weather or ECWCS Level VI Trousers or item # 125	1 ea.	LIN: E43367	Sister services and foreign students are authorized equivalent
42	STUFF SACK,LRG	1 ea.	LIN: DA659E	Sister services and foreign students will receive from CIF
43	STUFF SACK,SML	1 ea.	LIN: DA653U	Sister services and foreign students will receive from CIF
44	BIVY COVER, MODULAR SYSTEM	1 ea.	LIN: DA658R	Sister services and foreign students will receive from CIF
45	SLEEPING BAG ICW (Winter-Gray)	1 ea.	LIN: DA654N	Sister services and foreign students will receive from CIF
46	SLEEPING BAG-(Patrol-Green)	1 ea.	LIN: DA658Z	Sister services and foreign students will receive from CIF
47	CAP, PATROL, ARMY COMBAT UNIFORM	2 ea.	LIN: C02082	Cat eyes sewn on and name tape, (Velcro or sewn on; see note #1) Sister services and foreign students are authorized to wear equivalent uniform
48	Coat, ACU OCP (must have minimum of 2 winter uniforms the others can be Coat, IHWCU)	4 ea.*	LIN: C68926	Velcro or sewn-on Name tape and US Army. Sister services and foreign students are authorized to wear equivalent uniform
49	Trousers, ACU OCP (must have a minimum of 2 winter uniforms the others can be Trousers, IHWCU)	4 ea.*	LIN: T057108	Sister services and foreign students are authorized to wear equivalent uniform
50	T-Shirts, S/S; Tan 499; loose fitting	7 ea.		Cotton or polyester anti-micro bacterial authorized (T-shirt Service Specific, no logo's) Sister services and foreign students are authorized to wear equivalent uniform
51	Belt, brown non-elastic (rigger style)	1 ea.		Sister services and foreign students are authorized equivalent
52	Socks, cushion sole wool blend (military black, tan or green - non waterproof)	7 pr. Minimum		Black, tan or green - non waterproof - 7pr. are the minimum required, Students are encouraged to bring as many as they need. 12 pr. are the preferred quantity by students
53	Boots, Hot Weather Desert (IAW AR 670-1 with no buckles)	2 ea.		Sister services and foreign students are authorized to wear equivalent
54	PT Uniform: Jacket, Pants, Long Sleeve Shirt, Short Sleeve Shirt, Shorts	1 set.		Sister services and foreign students are authorized to wear equivalent
55	Socks, white/black (calf or above ankle only)	2 pr.		White/black calf or above ankle only
56	WATCH CAP, BLACK MICRO FLEECE	1 ea.	LIN: C03291	Black micro fleece, Sister services and foreign students are authorized to wear equivalent
57	Belt, reflective (high vis, yellow)	1 ea.		High vis, Yellow
58	PT Shoes	1 pr.		IAW service regulations
59	Ear Plugs with Case, Triple Flange minimum	1 ea.		Triple Flange minimum
60	Protractor	1 ea.		GTA 5-2-12
61	Razor, shaving (non electric)	1 ea.		Minimum of 1 (as needed authorized)
62	Razor Blades	12 ea.		Minimum of 12 (as needed authorized)
63	Alcohol Marker, permanent (4 pack multiple colors)	1 ea.		Minimum of 1 (as needed authorized)
64	Camouflage Stick (or like item)	3 ea.	NSN 6850-00-161-6204	Green and loam camo colors only. Students will not be allowed to use other colors of camo (white, Brown, black, Etc.)

All items below are Critical items that will be result in administrative action if missing (Major Unsatisfactory Spot Report). Missing 3 or more items will result grounds for dismissal form the course.				
65	Pack, Assault, Molle	1 ea.	LIN: DA657E	Cat eyes and name tape sewn on Assault Pack IAW ARTB SOP (Sister services and foreign students will receive from C/F)
66	Name-Tape, Cloth (sew on) for equipment	4 ea.		Only Needed if not sewn on (TAP, Camelback, Ruck, and ASLT Pack)
67	Bag Clothing Waterproof	2 ea.	LIN: B15825	Sister services and foreign students are authorized equivalent
68	Carrier, Intrenching	1 ea.	LIN: DA6545	Sister services and foreign students are authorized equivalent
69	Intrenching Tool, Hand	1 ea.	LIN: L00210	Sister services and foreign students are authorized equivalent
70	CUP WATER CANTEEN	1 ea.	LIN: F54817	Sister services and foreign students are authorized equivalent
71	ELBOW AND KNEE PAD SET ONE SIZE	1 ea.	LIN: DA 155S	Or equivalent/ after market knee/elbow pads authorized (Subdued Military Style)
72	MAT SLEEPING PAD, PT MAT	1 ea.	LIN: M24944	Sister services and foreign students are authorized equivalent
73	Black Tape, friction or electrical	2 rolls		
74	Eye glasses, prescription	2 pr min		Military issue, if required) w/ retainer bands
75	Civilian clothes consisting of: 1 Collared Shirt, 1 pr of Pants, 1 Jacket	1 ea.		Free of holes, tears and
76	CLEANING KIT, GUN	1 ea.	LIN: ZA0534	1 cleaning rod handle, 4 cleaning rods, 1 eyelet, 1 bore brush, 1 chamber brush, 1 two ended tooth brush, 1 pack of chamber patches, 1 small bottle of CLP)
77	Whistle (subdued color)	1 ea.	NSN 8465-00-254-8803	Or like item
78	Combination Locks (no key locks) 1x additional for unauthorized bags if from overseas unit or TDY enroute	3 ea. OCONUS+ 1ea		Each duffel bag is required to have a combination lock, student issued wall lockers will be secured with lock provided by student
79	Batteries; AA or AAA or 123 cell	16 min.		For personal flashlights/headlamps
80	Headlamp	1 min.		Must be red/white compatible
81	Luminous tape 1"x6" strip	1 ea.		Only Needed if not sewn on (TAP, Camelback, Ruck, Patrol Cap, and ASLT Pack)
82	Nylon Cord (550 type)	300 ft		Subdued color
83	Pens	10 ea.		Black
84	Pencils	10 ea.		Mechanical Pencils are authorized
85	Notebook, pocket size	2 ea.		Weather resistant preferred
86	Sewing Kit	1 ea.		With subdued color threads
87	Shaving Cream	1 can		
88	Toothbrush	1 ea.		Non-electric
89	Toothpaste	1 ea.		Large tubes
90	Towels, large	2 ea.		Green or brown
91	Towels (wash cloth)	2 ea.		Green or brown
92	Laundry Soap	as needed		
93	Shower Shoes	1 pr.		Any color
94	Soap	1 ea.		Bar or bottle
95	Tape, 100 MPH 2" Width	1 roll		Subdued color
96	Wristwatch (non GPS or Internet capable)	1 ea.		Non GPS or Internet capable (no built in compass)
97	Bag Duffel: Nylon	2/3 ea.	LIN: B14729	(no oversized duffel bags. One additional duffel bag with lock for unauthorized item if coming from an overseas unit or TDY enroute. Military issue
98	Bag, Barracks Cotton OR Civilian Laundry Bag	1 ea.	LIN: B13907	Subdued color, mesh authorized
All items below are ESSENTIAL items for females missing any item will be grounds for dismissal from the course				
100	Feminine Wipes/Additional Baby Wipes (not to exceed 124)	124 total		Unscented, counts against total baby wipes
101	Bras	2 to 6		White, black, or neutral color, per AR 670-1 20-28a(2)
102	Drawers Cotton or Polyester, Underwear	2 to 6 ea.		White, black, or neutral color, per AR 670-1 20-28a(2)
103	Pads/Tampons	2 month supply		Unscented, recommend w/applicator, addition zip lock bags authorized for storage of unused/used products
104	Female Urinary Diversion Device (FUDD)	1 ea.	LIN: SD1048 NSN 4510-01-470-2805	Neutral color if purchasing non-Army issued model
If Birth Control is utilized, the BELOW methods are authorized during training				
Recommended ALL birth control methods be implemented at LEAST 90 days prior to training				
105	Intrauterine Devises (IUD)	N/A		Mirena, Para Gard Only
106	Birth Control Pills	6 month supply		
107	Patch	6 month supply		Ortho-Evra (not recommended)
108	Implant	N/A		Nexplanon

All items below are OPTIONAL items and quantities that are authorized in the Ranger Course				
111	Bladder, Hydration w/ Bite Valve	1 ea.		70 oz min
112	HOOD CW BALACLACA	1 ea.	LIN: H46744	(Black or Foliage Green); Heavyweight fleece unauthorized, Students are encourage to bring 2 Balaclava due to perspiration and prolonged exposures in cold climates
113	Trousers, IHWCU	2 min	LIN: DA151U	If brought, counts towards the 4 minimum sets of ACU OCP complete uniforms (FRACU, Patagonia, Crye etc. are authorized) No V-top, Combat shirts, etc.
114	Coat, IHWCU	2 min	LIN: DA151J	
115	WAIST PACK -(4295)	1 ea.	LIN: DA6508	Sister services and foreign students are authorized equivalent
116	Alcohol Markers	as needed		Black/blue/red/green
117	Alcohol Eraser	as needed		
118	Anti-chafing Lotion: (6 - 8 fl. oz)	as needed		Free of alcohol, fragrance, and petroleum (Body Glide authorized)
119	Baby Wipes	124 total		Unscented, Alcohol free and without additives
120	Chemlights	20 each		Green/blue/IR are all acceptable no red
121	Cotton Swabs	1 box		
122	Drawers Cotton or Polyester, Underwear	6 pr		White, Brown, Green, Black or any Subdued color
123	JACKET, COLD WEATHER (HIGH-LOFT FLEECE JACKET LEVEL III)	1 ea.	LIN: E95281	Sister services and foreign students are authorized equivalent (LVL 3 Patagonia)
124	PARKA GORE-TEX CW	1 ea.	LIN: P69699	Sister services and foreign students are authorized equivalent (LVL 5 Patagonia)
125	TROUSERS GORE-TEX (TROUSERS CLD WTH)	1 ea.	LIN: X36109	Sister services and foreign students are authorized equivalent (LVL 5 Patagonia)
126	Electric Hair Trimmer	1 set		
127	Extra Bootlaces	1 pr		Any bootlaces matching color of boot
128	Finger/toe nail clippers	1 ea.		
129	Foot Powder	2 ea.		Anti-fungal, not containing menthol non-medicated
130	Gloves, Cold Weather, Civilian Gortex	1 pr		Black or subdued colors, minimum of 80 grams of thinsulate or 4 oz prime loft
131	Gloves, Nomex or Tactical Style	1 pr		Logo must be subdued or blacked in, no neoprene gloves
132	Gum	60 total		No energy, caffeine, and/or nicotine allowed
133	Hand Sanitizer	1 ea.		
134	Index Cards	2 packs		
135	Insect Repellent	1 ea.		Non aerosol
136	Insoles, Boots	2 ea.		Any Type
137	Large Trash Bags	1 box		
138	Lamination Paper	1 roll max		
139	Leatherman Type Tool	1 ea.		
140	Letter Writing Material	as needed		
141	Lighter and/or Weather Proof Matches	2 ea.		
142	Liner, Field Jacket	1 ea.		
143	Lip Balm	1 ea.		
144	Lotion 6-8 FL OZ.	2 ea.		Unscented, non menthol
145	Map Case	1 ea.		
146	Moleskin	as needed		Roll or Sheet
147	Pace Cord	1 ea.		
148	Pocket Knife (folding blade 4" or less)	1 ea.		Folding blade 4" or less
149	Retainer Bands	25 total		
150	Small Mirror	1 ea.		
151	Sunscreen	2 ea.		Non aerosol, 6-8 fl. Oz
152	Soap Dish	1 ea.		
153	Status Card	1 ea.		Status cards must be blank
154	TERRAIN MODEL KIT, SMALL	1 ea.		Small
155	Waterproof Bags	25 ea.		Zip lock, small
156	Whetstone	1 ea.		
157	Wrist Compass	1 ea.		
158	Calling card (rechargeable)	as needed		Pay phones available at each camp
159	Color Shoulder Sleeve Insignia and Flag	1 ea.		Color unit Patch and US or Country Flag for Graduation
Administration Foot Notes				
1) Ranger Cat eyes will be 1/2"x1" in size, sewn flush with name tape 1" apart.				
2) ALL ARMY COMPO STUDENTS WILL ARRIVE WITH THEIR OWN TA-50. CIF WILL NO LONGER ISSUE EQUIPMENT TO STUDENTS IN RANGER SCHOOL				
3)SF and 75th may wear unit issued equipment (i.e.. Cold weather clothing)				
4) ALL INTERNATIONAL STUDENTS ARE AUTHORIZED TO BRING THEIR OWN MILITARY ISSUED EQUIVALENT EQUIPMENT				
5) SISTER SERVICE STUDENTS ARE AUTHORIZED TO BRING THEIR SERVICE ISSUED EQUIVALENT EQUIPMENT				
Items NOT listed on the above packing list are UNAUTHORIZED				
THE AIRBORNE AND RANGER TRAINING BRIGADE IS NOT RESPONSIBLE FOR STORAGE OF ANY UNAUTHORIZED ITEMS. THE ONLY EXCEPTIONS WILL BE FOR STUDENTS COMING FROM OVERSEAS ASSIGNMENTS OR TDY ENROUTE				
For Overseas personnel Only; items will be confiscated and placed in hold baggage during initial layout. Students will sign a form stating that the Airborne and Ranger Training Brigade is not responsible for any loss or damage to personnel items stored while students are attending the course. If items are found during subsequent inspections, that item will be confiscated and student will be released from course. (You must bring one extra duffle bag and lock to store unauthorized items)				
The following items are UNAUTHORIZED and are grounds for dismissal				
Cellular Telephone or any electronic items			OCIE Guidance	
Any product with caffeine			Beginning FY23 1 Oct 22, all Ranger Students must report to class with ALL of the required OCIE items listed on this packing list (see notes).	
Tobacco products of any type			All US Navy, Coast Guard, and Air Force Students, DoD Foreign National Students are exempt to the note above; these students will receive OCIE items from FT. Benning CIF (reference Ranger school draw sheet).	
Civilian Long Underwear				
Contact Lenses				
Filled in Operations Order, FRAGO or ANNEX Formats,				
Modified Shoulder Strap Pads or Kidney Pads				
Spandex type Athletic Wear/Underwear (i.e. TIGHT fitting under armor)			All US Army Special Operation Service Members, Army National Guard Soldiers and Army Reserve Soldiers must bring ALL required OCIE items listed in this packing list or authorized equivalent (see notes).	
Vitamins and Supplements of any kind			OCIE support for COMPO 1,2,3 requests for emergency cases or exemptions must be routed through the Ranger School Senior TAC thru ARTB S4 for support decision. Only items that will be available for support are on the Ranger school Draw sheet.	
Gortex Socks			SR TAC Drop box: usarmy.benning.mcoe.mbx.artb-sr-tac@army.mil	
Civilian Medication I.E. Aspirin, Tylenol, Vitamins ETC			Submit memorandum NLT four weeks prior to the start of Ranger Class report date.	
No Personal TA 50 (Carabiners, Bungee Cords, civilian wet weather bag, waterproof cases, etc.)				
CASH OVER \$100				
Inspector MUST be SERGEANT or ABOVE			References:	
Inspector MUST print, sign, AND provide a phone number & email			Ranger School Draw Sheet as of 08 June 22 (CIF FT Benning)	
INSPECTED AND PACKED BY: _____			RANGER SCHOOL OCIE Draw Sheet GUIDE	
PHONE NUMBER: _____			CIF SPT REQUEST MFR Example	
DATE: _____				
PRINT OUT THIS PACKING LIST AND BRING WITH YOU FOR THE LAYOUT				

4ID PRE-RANGER PROGRAM SPONSOR INFORMATION

*NOT FOR THE WEAK OR FAINTHEARTED
RANGERS LEAD THE WAY!*

REPORTING INFORMATION:

Day One Students will report with their sponsors by 0900 @ BLDG 9474 in STERILE ARMY OCPS (NO UNIT ATTIRE). Below are the following items that the students must bring when they report.

1. Ranger School Packet (SGLV/DD93, SRB/ORB, Airborne Certification/ Orders, Ranger Physical complete with in 18 months of Ranger course start date, females need a pregnancy test, Commander's letter, Course enrollment form, DA 4187 signed by your Commander, DA 4187 for stabilization)

**** Students will not drive their POV ** Sponsors will bring SI Sterile M4 *meaning nothing attached*) and Night Optic Device(NODS) no earlier than 0900 and NLT 1300 on Day 1 *(first Wednesday of the course)* to BLDG 9474**

***SPONORS NEED TO BE PRESENT DAY ONE OF THE
COURSE FOR INPROCESSING***

4ID PRE-RANGER PROGRAM ENROLLMENT FORM NOT FOR THE WEAK OR FAINTHEARTED RANGERS LEAD THE WAY!							
NAME(LAST, FIRST MI.):		RANK:		LAST FOUR OF SSN:		DOD ID NUMBER:	
UNIT(CO, BN, BCT):		CELL PHONE NUMBER:		TRAINING ROOM NUMBER:		MOS:	
RPA PASS? DATE OF RPA: YES / NO (IF NO WHAT EVENT?)		HRP REPS:	PLANK:	5 MILE TIME:		PU REPS:	AGE:
1. DOES SOLDIER MEET HEIGHT AND WEIGHT STANDARDS IAW AR 600-9?						YES	NO
2. DOES SOLDIER HAVE A COMPLETE AIRBORNE RANGER PHYSICAL WITHIN 18 MONTHS OF CLASS START DATE? (IE DD FORM 2807/2808 WITH DOCTOR AND DENTIST SIGNATURE; CURRENT DD FORM 2216E (AUDIOGRAM); PRINTED COPY OF REQUIRED LABS; RADIOLOGY REPORTS; AND EKG IF APPLICABLE.) REQUIRED FOR COURSE ATTENDANCE						YES	NO
3. HAS SOLDIER COMPLETED PHA WITHIN 30 DAYS OF ATTENDANCE?						YES	NO
4. SOLDIER HAS A SPONSOR ASSIGNED TO THEM THAT WILL BE AVAILABLE WHILE SOLDIER IS IN ATTENDANCE? (SPONSERSHIP NEEDS TO BE COMPLETED AND IN HAND.)						YES	NO
5. DOES THE SOLDIER HAVE A STABALIZATION 4187 FOR 1 YEAR UPON COMPLETION OF RANGER SCHOOL? (INCLUDED IN PACKET.)						YES	NO
6. SOLDIER HAS COMPLETED RTT CHECKLIST, BAS RECOUPMENT MEMO, AND A COMMANDERS MEMO? (COMMANDERS MEMO REQUIRED FOR RANGER SCHOOL)						YES	NO
7. DOES THE SOLDIER HAVE A SIGNED 4187 FOR RANGER SCHOOL?						YES	NO
8. DOES SOLDIER HAVE THE COMPLETE RANGER SCHOOL PACKING LIST?						YES	NO
9. DOES SOLDIER HAVE AN ACTIVE GOVERNMENT TRAVEL CARD?						YES	NO
10. DOES SOLDIER HAVE A VALID CAC AND TWO SETS OF IDENTIFICATION TAGS? (MEDICAL TAGS MUST BE PRESENT IF APPLICABLE)						YES	NO
11. DOES SOLDIER HAVE TWO SETS OF MILITARY ISSUED EYE GLASSES WITH RATAINING STRAPS? (IF APPLICABLE)						YES	NO
12. HAS SOLDIER COMPLETED AN RPFT WITHIN 30 DAYS OF ATTENDING THE COURSE?						YES	NO
13. HAS SOLDIER COMPLETED 12 FOOT MARCH WITHIN 3 HOURS WITHIN 90 DAYS OF ATTENDING THE COURSE?						YES	NO
14. IS SOLDIER A WEAK SWIMMER?						YES	NO
15. DOES SOLDIER HAVE A PROFILE? (IF SO FOR WHAT?):						YES	NO
16. DOES SOLDIER TAKE MEDICATION? (IF SO WHAT?)						YES	NO
17. DOES SOLDIER HAVE ALLERGIES? (IF SO, WHAT IS SOLDIER ALLERGIC TO?)						YES	NO
BY SIGNING THIS FORM YOU CERTIFY THAT ALL INFORMATION IS CORRECT, YOU HAVE COMPLETED ALL TASKS REQUIRED FOR RANGER SCHOOL, AND YOU ARE VOLUNTEERING TO ATTEND RANGER SCHOOL UPON SUCCESSFUL COMPLETION OF THE PROGRAM.							
SOLDIERS NAME: (PRINTED)				SOLDIER SIGNATURE:		DATE:	
COMMANDER'S CONTACT INFORMATION							
OFFICE PHONE NUMBER:		CELL:		EMAIL:			
NAME: (PRINTED)		SIGNATURE: (BY SIGNING THIS YOU ARE VERIFYING SOLDIERS IS READY TO ATTEND RANGER SCHOOL)				DATE:	
1SG/SENIOR NCO CONTACT INFORMATION							
OFFICE PHONE NUMBER:		CELL:		EMAIL:			
NAME: (PRINTED)		SIGNATURE: (BY SIGNING THIS YOU ARE VERIFYING SOLDIERS IS READY TO ATTEND RANGER SCHOOL)				DATE:	



ARTB School Physical Exam Checklist IAW AR 40-501 chap 8-12

<p align="center">PASS YOUR PHYSICAL!</p> <p align="center">Check your physical exam. Do not assume it was done correctly. It is your responsibility to make sure all these blocks, labs, and studies are completed. <u>ANY DEFICIENCY BELOW WILL PROHIBIT YOUR ENTRANCE INTO SCHOOL ON DAY-ZERO.</u></p>	Ranger		Airborne	
	34 or younger	35 or older	34 or younger	35 or older
REPORT OF MEDICAL HISTORY DD FORM 2807-1 (3 Pages)	X	X	X	X
Name and SSN completed on every page by service member	X	X	X	X
Blocks 1-29 completed by service member	X	X	X	X
Block 30 a, b & c completed by examiner	X	X	X	X
REPORT OF MEDICAL EXAMINATION DD FORM 2808 (3 Pages)	X	X	X	X
Name and SSN completed on every page by service member	X	X	X	X
Blocks 2-15 completed by service member	X	X	X	X
Blocks 1, 16-42, 44, 45-58, 72b, 73, 74 a & b, 77, 78, & 81 a & b completed by examiner	X	X	X	X
Exam must be dated within 18 months Ranger; 5years for Airborne of course start date	X	X	X	X
Blocks 43, 83 a & b completed by dentist (Must be Category 1 or 2)	X	X	X	X
Blocks 59, 61, & 63 completed by optometry (<i>per AR 40-501, Chap 5-3g</i>)	X	X	X	X
Block 71 completed by audiology or attached DD Form 2216E (H2 or H3 Require Waiver)	X	X	X	X
Physical Exam is qualified for "Airborne/Ranger Training/School" (block 74a)	X	X	X	X
MD/DO Signature (block 81 a & b if exam was completed by MD/DO) (block 84 a & b if exam was conducted by a PA)	X	X	X	X
ARTB schools physical examination lab requirements (documented on DD Form 2808)				
Urinalysis (block 45 a & b)	X	X	X	X
Urine HCG (females only) (block 46)	X	X		
HIV with results and test date (within 2 years) (block 49)	X	X	X	X
Urine Microscopy (block 73)	X	X		
Sickledex (Sickle Cell screening) (block 73)	X	X		
Basic Metabolic Panel (BMP) or Fasting Blood Sugar (FBS) (block 73)		X		
Complete Blood Count (CBC) or H/H (block 73)	X	X		
Women's Readiness Guideline IAW OTSG/MEDCOM Policy Memo 09-031 (Block 73)	X	X	X	X
Electrocardiogram (ECG) (block 73)		X		X
Fasting Lipid Panel (block 73)		X		
Rectal Exam with Occult Blood (block 73)		X		
Additional Requirements				
Printed copy of ECG report		X		X
Printed copy of Hearing Examination (DD Form 2216E) (H2 or H3 Require Waiver)	X	X	X	X
Printed copy of waiver granted by ARTB Surgeon (if applicable)	X	X	X	X
COMMENTS:				
1. It is highly recommended that you take this checklist to your TMC when you report for your examination.				
2. Ensure your provider checks Army Regulation 40-501 CHAPTER 5-3, 5-4 and 2 for conditions that require a waiver.				
3. If you are marked "DISQUALIFIED" for any reason, you must submit for a waiver through the ARTB Brigade Surgeon. Guidance can be found on http://www.benning.army.mil/infantry/rtb/StudentInformation.html .				
4. Bring a complete copy of you DD2807-1 & DD2808 (6 pages) and everything listed in you in your additional requirements.				
5. Leave a copy of everything with someone who can e-mail it for you on a weekend.				
6. If you have any questions contact 4th RTBn Peney Aid Station at (706) 544-6965.				
DO NOT BRING ORIGINALS				
DATED: 26 FEB 2020				