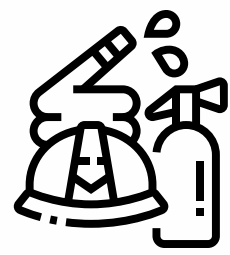


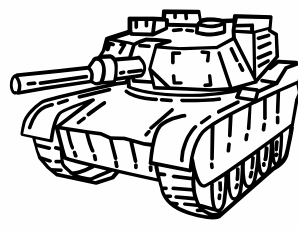
PATHWAYS OF PFAS

WHERE PFAS IS FOUND



Firefighting

- Foams
- Pumps
- Equipment
- Facilities

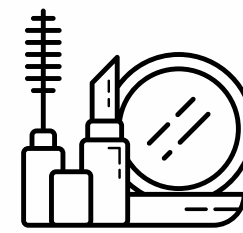


Military

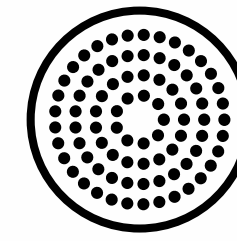
- Equipment
- Facilities
- Firefighting Foam



Pesticides

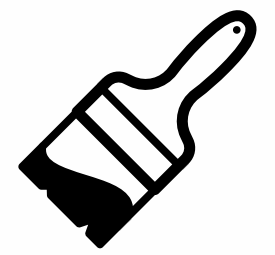


Cosmetics

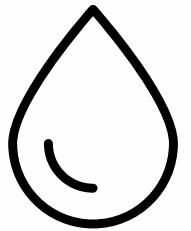


Coating

- Metals
- Textiles
- Papers
- Photography
- Electronics
- Packaging

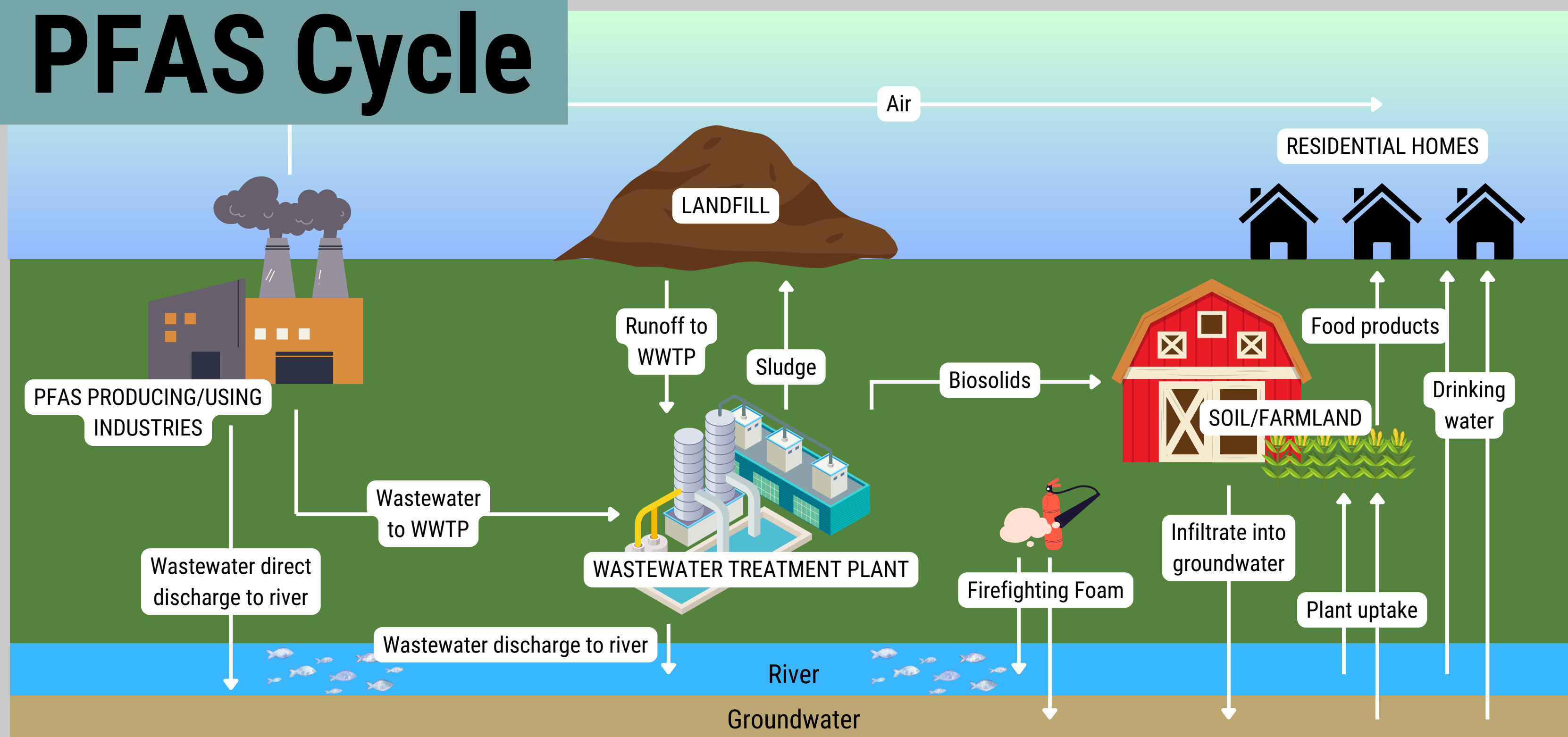


Paints



Hydraulic Fluids

PFAS Cycle



HUMAN EXPOSURE
LARGELY DUE TO
IMPACTED FOOD &
DRINKING WATER

POSSIBLE SOURCES OF EXPOSURE

- Working in firefighting or chemicals manufacturing/processing occupations
- Consuming impacted food & water
- Ingesting impacted soil, dust, or air
- Using products made with PFAS and/or packaged in materials containing PFAS
 - Cleaning products; water-resistant items such as umbrellas & tents; non-stick cookware; shampoo, dental floss, nail polish; stain-resistant coatings used on carpets, upholstery, & other fabrics

