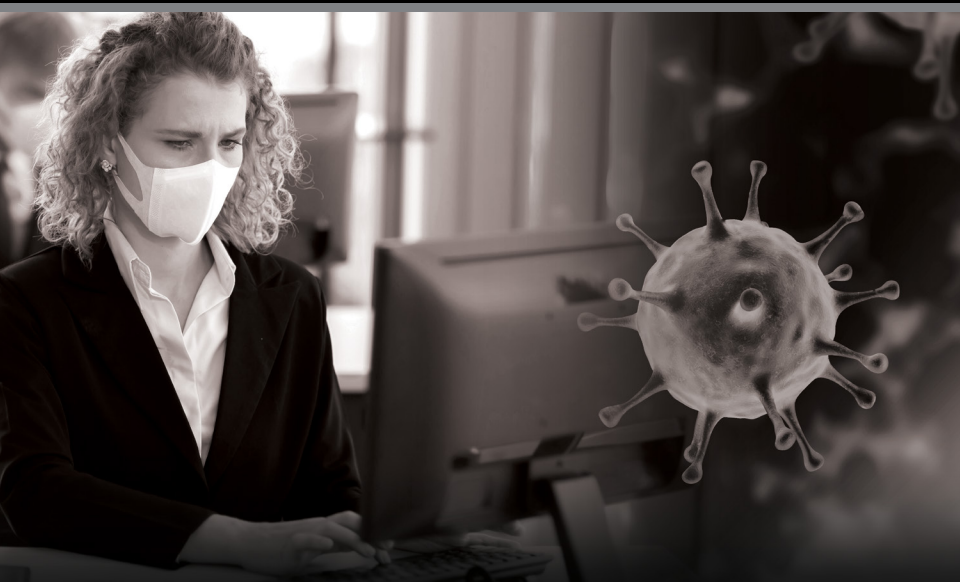




U.S. ARMY

ABERDEEN PROVING GROUND



WELCOME BACK!



It takes a team. Together, we'll do what it takes to stay safe in the workplace. Help keep your environment safe by following the proper protocols.



BUSINESS INFO

Stopping at PX/gas station

- All patrons must wash hands prior to entering the facility.
- All patrons must utilize face coverings upon entering the facility.
- Fuel pumps are open 24/7.

Hours: Mon–Fri, 0700–1900; Sat–Sun, 0900–1700

Stopping at the Commissary

- All patrons must be screened prior to entering the commissary parking lot.
- All patrons must utilize face coverings upon entering the facility.

Hours: Sun, 1000–1700; Mon, Closed; Tue, 0900–1900; Wed–Fri, 1000–1900; Sat, 0900–1800

Stopping at the Exchange

- All patrons must wash hands prior to entering the facility.
- All patrons must utilize face coverings upon entering the facility.

Hours: Mon–Fri, 1000–1800; Sat–Sun, 1000–1600

Gym Usage

- All authorized patrons must wash hands prior to entering the facility.
- All authorized patrons must utilize face coverings upon entering the facility.

Hours (APG Athletic Center and Hoyle Gym): Mon–Fri, 0530–0900 & 1330–1630, for service members only. All personnel must be in duty uniform (OCP or APFU) in order to access the facility. Authorized use of the gym will be granted in phases.

Barbershop

- All patrons must wash hands prior to entering the facility.
- All patrons must utilize face coverings upon entering the facility.

Hours: 1000–1500 daily

Dry Cleaning

CLOSED

For additional information, visit the APG MWR website:

<https://aberdeen.armymwr.com/>