



# Environmental Management System (EMS)

## Generic Awareness Training



# Environmental Management System (EMS)



- Framework for managing an organization's environmental responsibilities so they become more efficient
- Environmental considerations or requirements integrated into day-to-day practices and overall operations
- The EMS helps to ensure compliance and to continuously improve overall environmental performance
- All post organizations are integrated into the EMS (fence-line-to-fence-line)
- The EMS includes measurable environmental goals, objectives, and targets that are reviewed and updated annually
- **EMS** is a system of continuous improvement according to the following general principles:

Identify → Plan → Do → Check → Act



# What is EMS?

**Ultimate Goal: Sustainability**

## **E**nvironmental **M**anagement **S**ystem





## Continuous Improvement of the USAG Ansbach EMS





# Why implementing EMS

EMS required by:

- Executive Order (EO) 13693, *Federal Leadership in Environmental, Energy, and Economic Performance*, to be implemented and maintained at each U.S. Federal agency (to include the Department of Defense), signed 8 October 2009
- Die EO 13514 was substituted by **EO 13693**, Planning for Federal Sustainability in the next Decade, signed 19 March 2015.
- ISO 14001 is a specific EMS framework
  - International Organization for Standardization (ISO) developed several voluntary international standards for management of different types of systems
  - ISO 14001 is a systematic approach to environmental management or a “systems approach” for achievement of continual improvement

# **EMS shall be implemented fence line to fence line**

**to include our :**

**Soldiers**

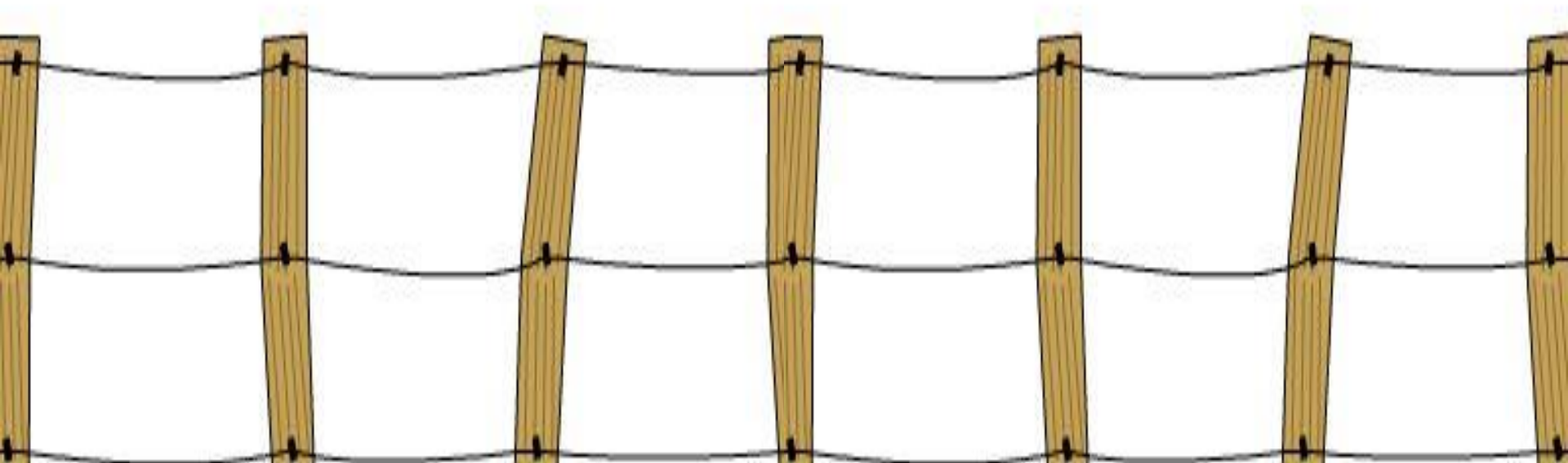
**Tenants**

**Families**

**Activities**

**Contractors**

**Products & Services**







# Why Implementing EMS?



- **EMS** allows the USAG Ansbach to achieve and demonstrate sound environmental stewardship by controlling the environmental impacts of USAG Ansbach activities, products, and services
- **EMS** creates consistent processes throughout the USAG Ansbach
- **EMS** reduces USAG Ansbach operating costs
- **EMS** fosters planning rather than reaction
- **EMS** enhances the USAG Ansbach public image
- **EMS** sustains mission readiness



# What is EMS Awareness?



As a person working for the USAG Ansbach, or working in the footprint of USAG Ansbach, **you must be made aware of the following:**

- ✓ The importance of conformity with the USAG Ansbach Environmental Policy and with the USAG Ansbach EMS
- ✓ The significant environmental aspects and the related actual or potential environmental impacts associated with your work, and the environmental benefits of improved personal performance
- ✓ Your roles and responsibilities in achieving conformity with the requirements of the USAG Ansbach EMS; and
- ✓ The potential consequences of departure from specified procedures





# Environmental Policy (1)



With this Environmental Policy, the USAG Ansbach commits to:

- ✓ “Comply with all applicable environmental policies, laws, regulations, and other requirements”
- ✓ “Continually identify potential sources of pollution and commit to the prevention of pollution to meet or exceed U.S. Army goals.”
- ✓ “Set objectives and targets to reduce our environmental impacts through our environmental management programs. Review progress toward the environmental objectives and targets annually during the conduct of EMS management reviews.”



# Environmental Policy (2)



The USAG Ansbach commits to:

- ✓ “Strive to fully integrate relevant environmental considerations into all installation activities, business decisions, and standard work practices and procedures so environmental awareness and compliance are a routing part of the way we conduct business.”
- ✓ “Actively pursue continual improvement in organizational environmental management systems”
- ✓ “Continually measures performance to assess system effectiveness through internal and external environmental assessments”



# EMS Management Representative



The USAG Ansbach Commander has designated an EMS Management Representative (EMS MR) to provide oversight of the implementation of the USAG Ansbach EMS

EMS Management Representative (**EMS MR**)  
DSN 467-2968

For the coordination of the implementation and maintenance an EMS Coordinator (EMS Cor) was appointed from the Commander:

EMS Coordinator (**EMS Cor**)  
DSN 467-2774

The **EMS MR** and **EMS Cor** are the USAG Ansbach individuals to contact should you have questions, comments, or concerns in regard to the USAG EMS



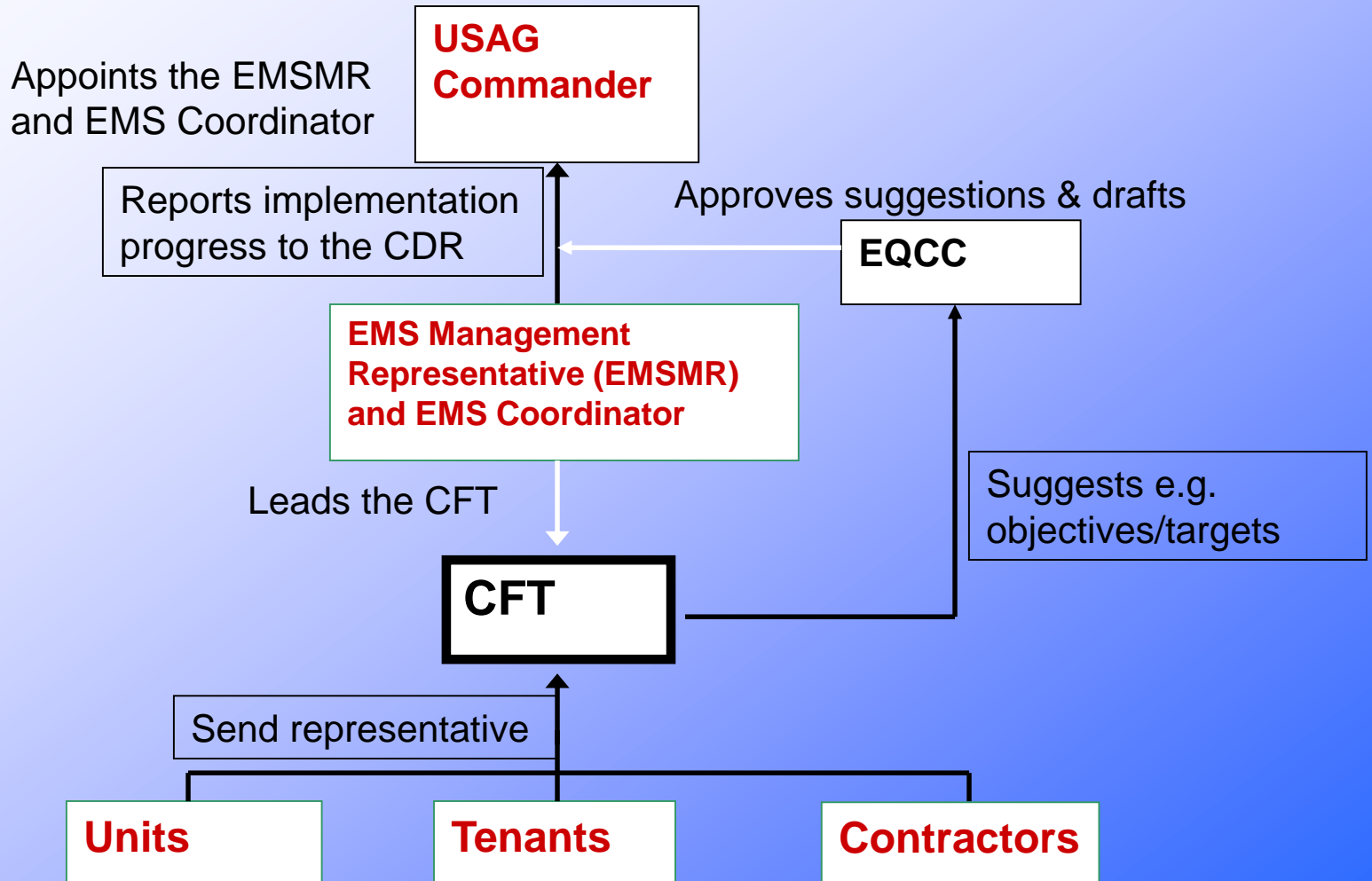
# EMS Cross-functional Team (CFT)



- The USAG Ansbach Commander has designated an EMS Implementation **Cross-functional Team (CFT)** to actively implement the USAG Ansbach EMS
- EMS CFT includes representatives from across USAG functional areas and directorates and supports the EMSMR and EMSC in accomplishing EMS implementation tasks
- EMS CFT Members are tasked with, or volunteer for, specific responsibilities and coordinate or actively address EMS implementation tasks
- EMS CFT Members are expected to communicate EMS information to/from their respective functional areas and directorates



# USAG Ansbach EMS Organization





# Aspects and Impacts

- **ASPECT**: An element of an organization's activities, products, or services that can interact with the environment
- **IMPACT**: Any change to the environment, whether adverse or beneficial, wholly or partly resulting from an organization's activities, products, or services
- In summary:
  - ASPECT = the cause
  - IMPACT = the effect





# What is an Environmental Aspect/Impact



An **environmental aspect** is the element of the USAG Ansbach's activities or products or services that can interact with the environment

A significant environmental aspect has or can have a significant environmental impact.

An **environmental impact** is any change to the environment, whether adverse or beneficial, wholly or partially resulting from the USAG Ansbach environmental aspects



# What is an Environmental Aspect?



- Sample of a garrison activity:
  - **Car Washing**
- The aspects for the activity above are:
  - Use of material (Soap, Cleaner)
  - Energy and Water consumption
  - Production of Waste Water



# What is an Environmental Impact?



- ❖ The possible impact for the activity Car Washing could be:
  - Depletion of Resources (Water, Energy, Material)
  - Contamination of surface water
  - Possible hazardous material spills



# What is an Environmental Aspect/Impact and an associated Objective?



Another sample together with objectives and targets:

<b>Significant Aspect (cause):</b> Generation of hazardous waste	<b>Impact (effect):</b> Disposal of hazardous waste
<b>Objective:</b> Reduce the overall amount of HW generated by 5% in FY10	<b>Exemplary Targets:</b> <ul style="list-style-type: none"><li>• Reduce generation of waste fuel</li><li>• Provide at least 1 training class a year/EO</li><li>• Substitute at least one HM per year with environmentally friendly product</li><li>• Continuously provide awareness training</li></ul>



# Significant Aspects



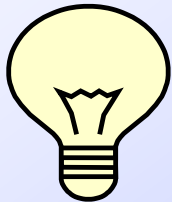
- USAG Ansbach has identified **11 significant aspects** as part of the EMS implementation process based on:
  - Frequency
  - Environmental Impact
  - Mission Impact
  - Regulatory Impact
  - Community Concerns
- The following have been identified as **significant aspects**:
  1. **Product Procurement**
  2. Soil/GW contamination
  3. **Energy Consumption**
  4. **Water Consumption**
  5. Noise Generation
  6. Fuel Consumption
  7. Air Emissions
  8. Spill to Water/Soil
  9. HW Generation
  10. Erosion
  11. Endangered Species



# Our Most Significant Aspects



## Energy Consumption



## Green Procurement



## Water Consumption







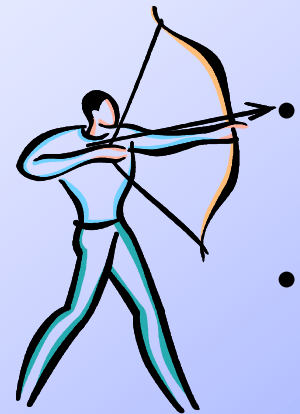
# Our Objectives, Targets & Programs



- Reduce energy consumption by 3%.
- Reduce water consumption by 2%.
- Implement a Green Procurement Program (GPP).



- DEFAC Project
- Housing Project Urlas





# Individual EMS Responsibilities

What are **your responsibilities** with the USAG Ansbach EMS?

Be **knowledgeable** of the USAG Ansbach Environmental Policy,  
adhere to the USAG Ansbach Environmental Policy

**Share knowledge** of your activity-specific operations and the  
associated environmental aspects and impacts with USAG  
Ansbach EMS Implementation CFT members

Be knowledgeable of the significant environmental aspects and  
impacts of your activity-specific operations and strive to  
eliminate / minimize any negative environmental impacts

**Understand and follow standard procedures** and operational controls  
that are applicable and appropriate to your activity-specific  
operations



# Individual EMS Responsibilities

What are **your responsibilities** with the USAG Ansbach EMS?

**Inform** your superior(s) of changes in your activity-specific operations that may result in new or changed environmental aspects or impacts

**Identify** opportunities for improvement to the USAG Ansbach EMS based on your experience with its implementation and share these opportunities with USAG Ansbach EMS Implementation CFT members

**Educate** those individuals around you about your activity-specific environmental aspects and impacts



# EMS Documents



- EMS documents include information for managing the overall EMS as well as operational controls relating to the significant aspects
- All official versions of EMS documents are maintained on the Garrison's share portal:

**<https://home.army.mil/sites/eur/Ger/Ans/dpw/Environmental/default.aspx>**

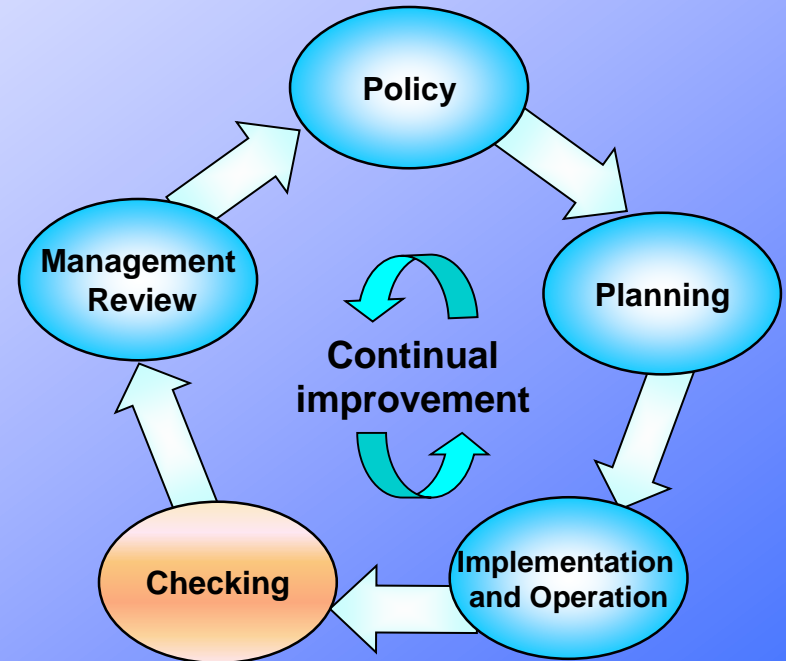
- The Master Document List includes all the controlled documents associated with the EMS and the date of the most recent revision
- Personnel should check the portal regularly to ensure that they have the most recent version of all documents prior to use
  - This is especially important for forms to make sure that the correct version is used each time one is completed



# Checking and Feedback Process



- ❖ Monitoring and Measuring of Key Characteristic, e.g Energy consumption, waste generation, and the Garrisons Goals
- ❖ Compliance Evaluation (EPAS)
- ❖ Corrective Actions
- ❖ Internal/ external Audits







# Management Review

- Annual senior management reviews.

Items to be reviewed:

- Audit results
- Policy
- Environmental objectives and targets achievement
- Preventive and corrective action implementation
- Communication from external parties



**Essential to continual improvement!**





# EMS Conformance



- USAG Ansbach uses its EMS as a framework to:
  - Ensure more efficient management of the installation's environmental programs;
  - Help the installation stay in compliance with regulatory requirements; and
  - Help continuously improve overall environmental performance.
- Ansbach's EMS is mission-focused and integrated into all installation activities
- EMS conformance is essential to continued success of the environmental programs
- The EMS status is checked annually through the internal EMS audit and internal EPAS as well as through the annual Management Review.



# EMS Nonconformance



- Nonconformance with the USAG Ansbach EMS may result in environmental consequences (e.g., pollution to soil, pollution to groundwater, upset / disturbance of wastewater treatment facilities, unnecessary or unplanned expenditures)
- It is important to report nonconformance to the USAG Ansbach EMSMR to allow for an appropriate review of the nonconformance and for corrective actions to be implemented



# Conclusion

- **Everyone** in the USAG Ansbach community is part of, and contributes to the USAG Ansbach EMS
- **Everyone** must work together to ensure the activities, products, and services of the USAG Ansbach do not have negative impacts on the environment
- **Everyone** is responsible for ensuring good environmental stewardship

**Everybody's Management System**



# Things You Can Do

- Know How Your Job Can Impact the Environment
  - Determine the possible environmental impacts of your activities
- Work Procedures
  - Review the most current procedures, objectives and targets, ensure they are understood and easy to locate
- Emergency Response Procedures
  - Know what to do in the event of an emergency
- Reduce your use of resources
  - Water and electricity – turn off when not in use!
- Reuse materials
  - Office supplies – reuse extra pages as scrap paper



# More Things You Can Do...



- Recycle
  - Scrap metal, aluminum cans, plastic, paper and glass bottles
- Purchasing
  - If you purchase items, purchase them in accordance with the Affirmative Procurement Plan (buy recycled products!)
- Report spills to the Fire Department and EMD
- Where to find more information on EMS
  - DPW share portal – when available
  - Ansbach web page (**outdated at the moment**)



# POCs



EMS Management Representative (EMS MR)  
CIV 09802-83-2968  
DSN 467-2968

or

EMS Coordinator (EMS Cor)  
CIV 09802-83-2774  
DSN 467-2774

<https://home.army.mil/sites/eur/Ger/Ans/dpw/Environmental/default.aspx>