

Landkreis Ansbach/Stadt Ansbach
Landkreis Neustadt a.d.A./Bad Windsheim

USAG Ansbach SORT Brochure

To Include waste management in the
city of Ansbach and Illesheim and
the counties of Ansbach and NEA/
Bad Windsheim.

2019

ON-Post Ansbach / Illesheim
page 4-11

OFF-Post City/County of
Ansbach/ NEA B.W.
page 12-22

Why Recycle? It's the Law!

German environmental waste laws and Army Regulation 420-1, (Separate Or Recycle Trash Program - SORT), and the recycling policy letter require separation and special disposal of recyclable materials and hazardous waste.

Recycling protects Public Health and the Environment, and saves Taxpayers Money!

Recycling reduces the volume of solid waste that would normally be burned in the incinerator. Using recyclables and recycled products saves energy and reduces air and water pollution. In addition, trash disposal costs increase every year.

Avoid Plastic Packaging waste! Sample: Use Cloth bags for shopping. Advantage: it is re-usable and easy to clean in the washer.

Recycling one ton of material is 25% of the cost for the same amount of trash. Thus, recycling saves taxpayers money that can be used to improve the quality of life in our community.

Recycling at Home

Pre-sorting at home and office: Have separate containers ready for glass, metal, plastic, bio and trash. PX/ Commissary bags or boxes can double as recyclable containers, be creative. Cardboard boxes work well because they are sturdy. Stackable crates are good for people with limited space.

Rinsing recyclables will prevent odors and pests.

Household Hazardous Waste

By definition, Household Hazardous Waste are products that may, due to their chemical nature, pose a threat to human health or the environment when handled improperly (see page 19 for examples).

Household Hazardous Waste are commercial products that are toxic, flammable, reactive or corrosive. For disposal on-post, see page 9, for off-post disposal see page 19.

Limit your Use of Hazardous Products!

- choose 'green' cleaners (vinegar works great)
- buy only what you will use and use it all
- choose pump sprays over aerosol sprays
- use water based paint
- reuse paint thinners and turpentine
- choose native, pest resistant plants

Common Words on Recycling Containers

GERMAN

NUR FÜR WEISSGLAS
BRAUNGLAS
GRÜNGLAS
ALTMETALL
KLEIDERSPENDE
ALTPAPIER

ENGLISH

ONLY FOR WHITE GLASS
BROWN GLASS
GREEN GLASS
METAL
CLOTHING
PAPER + CARDBOARD

Recycling Quiz

Now that you are familiar with the USAG Ansbach SORT program, test your knowledge!

1. In which container should you dispose of your plastic bottle?
 - A. In the black container for regular trash.
 - B. In the brown container for BioWaste if available. If not, then in the black container with regular trash.
 - C. In the yellow container for plastic.
2. Disposal costs for kitchen grease/oil:
 - A. \$200 / ton
 - B. -\$175 / ton
 - C. \$10 / ton
3. Where would you dispose of an empty can of oven cleaner?
 - A. In the black container for regular trash
 - B. In the container for metal
 - C. At the recycling center
4. Where would you dispose of the empty blue glass bottle?
 - A. In the yellow container for plastic
 - B. If not returnable for a refund, in the container for green glass
 - C. In the black container for regular trash
5. Where would you dispose of your broken washer?
 - A. At the recycling center
 - B. Throw it out with the regular trash
 - C. Put it on the ground next to the road



Answers: 1. C, 2. B, 3. C, 4. B, 5. A

What shall go in the Clothes Containers:

- Clean, wearable Clothes
- Wearable pairs of shoes Disposal of textiles and shoes in clean condition only!

Put clothes in bags, and put each pair of shoes into a tied bag.

Locations of Clothes Containers on post:

Katterbach Housing:
Bldg 5987, 5912, 5921, 5920, 5946, and at the Recycling Ctr.

Bleidorn Housing:
bldg 5096, 5081

Urlas Housing:
bldg 8476 and at the turning area

Storck Barracks
Illesheim:
next to bldg 6607/6623, and Recycling Ctr.



Note: Turn in military uniforms (damaged, non-usable) at the Central Issue Facility (CIF), Barton Barracks, Bldg. 5264, open M-Th 0800-1100 & 1300-1530, Closed On German and U.S. Holidays.

**Mon-Wed-Fri:
Tue-Thu:**

**0900 - 1200 & 1300 - 1700
1300 - 1800**

Closed on Saturdays, Sundays, and German Holidays.

Storck Barracks:

Located next to Bldg 6689

DSN: 467 - 4627

CIV: 09841-83-4627

Katterbach:

Bldg 9024

DSN: 467-2194

CIV: 09802-83-2194

**Shipton: next to Bldg 8031
temporary open hours**

Recycling Center Katterbach/Illesheim have containers for collection of:

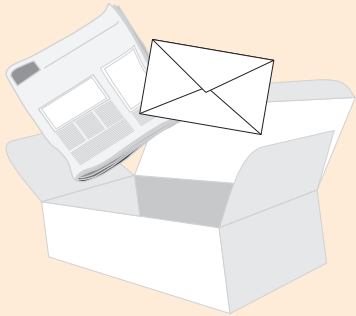
- glass bottles
- wood/wooden items
- paper + cardboard (large amounts)
- electronic/electrical devices: multimedia electronics, TV sets, electrical kitchen devices, refrigerators, cables, etc.
- household hazardous waste labeled "Danger" or "Caution": cleaning agent residues, paint residues, dry cell batteries, fluorescent lamps, energy saving lamps, etc.
- bulk refuse (furniture, mattresses, carpet flooring, etc.)
- scrap metal (barbecues, bikes, etc.)
- pottery, ceramics, porcelain, stoneware, construction debris
- greenery + garden waste
- plastics, toys, Styrofoam packaging material
- industrial glass (window glass, mirrors, etc.)



In addition to the bulk refuse container at the Recycling Center, an extra bulk refuse collection is conducted twice a year (spring / fall) on-post at housing areas Urlas, Katterbach, Bleidorn, and Barton Meinhardswindener Strasse (single/duplex houses). Exact dates will be announced through chain of command.

Paper and Cardboard -on post-


5



Deliver large amounts of paper + cardboard to the Recycling Center (see page 4)

- all kinds of notepaper
- computer paper
- envelopes
- colored paper
- brown paper bags
- flattened cardboard
- newspapers
- junk mail
- magazines, books
- paper towels, not soiled

Please note:



Milk and juice cartons are considered "plastic". Drop them in the container for plastic collection. Do not put milk & juice cartons into paper containers!

Please remove packing materials such as packing peanuts, plastic foil, and styrofoam from large boxes and dispose of them properly. Then break down the boxes before disposal in the green paper containers.



22

Other Recyclable Materials - off post -

off-post



plastics



scrap metal



electric/electronic waste



CDs and DVDs



batteries



cork

German Recycling Centers take a variety of materials. Here are some examples:

- Plastic material not listed on page 17: toys, baby bottles, bags, flowerpots, buckets, tubs, plastic baskets, etc. - remove all metal
- Scrap metal
- Bulk waste, wood/wooden items
- Electric and electronic appliances, cables, energy saving bulbs, fluorescent lamps
- CDs and DVDs
- Household batteries, coin batteries, rechargeable batteries
- Candles
- Cork, cork stoppers from wine bottles, cork pin boards
- Shoes and clothes in good condition
- Stoneware, porcelain, pottery
- Window glass, mirrors, wired glass
- Cooking grease/oil

Handling of cooking grease:

1. Thickened grease: please collect in plastic bags
2. Liquid grease/oils: please collect in bottles or cans

Cooking grease/oil clogs your sewer line! Do not pour down the drain!

Off-Post Containers for Metal Recycling 21

Metal recycling containers can be found throughout the cities/counties of Ansbach and Neustadt/ Bad Windsheim next to the glass recycling containers.



- soda & juice cans
- tin cans
- pie/pizza tins
- cookie tins
- metal tops, caps, lids
- scrap metal (small pieces)
- empty, non-hazardous aerosol cans
- pots, pans



Note: When recycling batteries, if there is no yellow box available, take them back to the shop where you purchased them, or they can be brought to the O&M office on Bismark Kaserne, Bldg 5843 A or to the on post recycling centers.

NOTE: Off-Post Metal recycling containers for Ansbach and the surrounding areas are Blue or Grey. Off-Post Metal recycling containers for Neustadt/ Bad Windsheim and the surrounding areas are Red.

6

Glass Recycling -on post-



Container for glass recycling can be found throughout the community.

- white container for white glass
- green container for green and other color of glasses
- brown container for brown glass



Glass accepted in containers:

- glass food jars
- juice bottles
- liquor bottles
- soda/beer bottles (without deposit)
- wine bottles
- drinking glasses

Glass NOT ACCEPTED in containers (Take it to the Recycling Center):

- windows, mirrors (industrial glass)
- fluorescent light tubes, energy saving lamps
- pottery, porcelain, stoneware
- regular light bulbs go into the trash container.

****Separating glass by color is necessary & economically efficient for the recycling process.**



Metal Recycling -on post-

7



- soda & juice cans
- tin cans
- aluminum foil, pots, pans, take out trays, frozen food trays
- pie/pizza tins
- cookie tins
- metal tops, caps, lids
- scrap metal (small pieces)



Metal recycling containers can be found throughout the installation next to each recycling point, and inside the trash locations in the housing areas.



Rinse metal cans and items to prevent odors and pests.
No aerosol cans! This is Hazardous Waste (see page 9).



20

Bulk Refuse Collection -off post-



- bicycles, buggies
- carpets, rugs
- floor covering
- furniture, lamps
- mattresses
- wooden items
- scrap metal
- large electrical devices

**For help call DPW-
O & M Division:
CIV 09802 83 3403
DSN 467 3403**

Bulk waste pick up for each household is available once a year. Please put waste in your front yard on the scheduled day for pick up. Pick up will be scheduled within 8 weeks after notification. Call your landlord to schedule a pick up appointment.

If transportation is available, you can also take your bulk refuse to the German Recycling Centers.

Household waste, particularly recyclable, is allowed to be disposed of.



Off-post trash disposal is your monthly allowance.



Household Hazardous Waste -off post-19



For Hazardous waste disposal times and dates, visit the recycling link on the bottom line.

The recycling facility Dettendorf take your household hazardous waste for free. See page 12 for location and hours of operation.

- paints and varnishes
- aerosol spray paint and other hazardous residues
- paint remover, brush purifier, solvents
- turpentine, benzene
- fluorescent tubes, energy saving bulbs
- fire extinguishers
- cosmetics, nail polish and remover
- drugs and pharmaceuticals
- antiseptic agents
- cleaning products, spot remover, bleach
- pesticides, rat poison, herbicides
- adhesives
- any other kind of hazardous household chemical
- antifreeze
- brake fluid
- grease, used oil, lubricants
- oil filters, oil contaminated rags
- rust converter, rust remover
- any other hazardous car care product

A list of German Recycling Centers can be found under the following link: <http://www.ansbach.army.mil/recycling.html>

8

Plastic Recycling -on post-

Plastic recycling containers can be found throughout the installation next to recycling points.

Take bulky Styrofoam used for packaging to the Recycling Center. There, Styrofoam gets collected separately from plastic which allows even better recycling.

Avoid to buy Plastic items!

Did you know:

The industry require large amounts of water and energy for the production of new plastic items. Plastic pollutes the environment and oceans (micro plastic particles) between 100-140 million tons of trash land in the oceans, and a big part is plastic waste.

Sample: the decomposition of a plastic bottle takes longer than 400 years!



Utilize the yellow containers for all of your plastic recycling needs!



- plastic bags
- plastic bottles (without deposit)
- milk and juice cartons and other plastic/paper compound material
- chip bags, coffee wrapping and other plastic/aluminum compound material
- plastic wrap, bubble wrap and other plastic packaging material
- plastic food and drink containers + lids
- ice cream boxes
- candy wrappers
- disposable dishes and cutlery
- Styrofoam plates, cups
- wax paper
- pill boxes
- plastic coat hangers
- small plastic toys
- Styrofoam peanuts for packaging
- Empty Shampoo Bottles

Household Hazardous Waste -on post- 9

The on-post Recycling Centers accepts Household Hazardous Waste (see page 4). See page 19 for a list of examples of Household Hazardous Waste.

ATTENTION! Do not rinse containers or pour residuals down the drain. This can potentially lead to harmful chemicals polluting the environment!!



Scrap Metal, Wheels and Tires -on post-



Auto Skills Center:

Urlas Community: Bldg 8130
DSN 467- 2753

or bring them to on post
Recycling Centers



18

Organic Waste -off post-

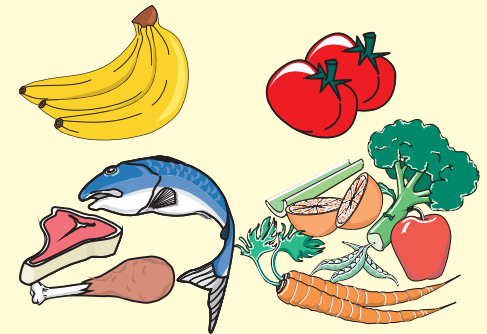
Dispose of organic waste in the brown container, if available at your home.

If not available, organic waste goes into the refuse trash container.

Keep Bio container closed to avoid odors and pests.

Remember to periodically rinse Bio Container.

- kitchen scraps, sausage, cheese
- bones, fishbones, meat and fish
- eggshells
- Fruit and vegetable peels and rinds
- coffee filters, coffee grounds, tea and tea bags
- grass clippings, garden mulch greenery, plant roots, decayed plants and shrubs
- soiled paper towels and napkins



Wrap organic waste in paper bags or newspapers. Paper is biodegradable and soaks up moisture.

No plastic in organic waste!
Plastic is not biodegradable

No diapers!!! No trash!!!

Plastics and other Packaging -off post_ 17

County of Neustadt Aisch/ Bad Winsheim



Pre-separation at home by the following categories makes recycling easier at the Recycling Center:

Aluminum and Aluminum compound materials:

- aluminum foil
- pie and food trays
- coffee cans or wrappers
- snack/ chip bags
- aluminum pots and pans
- aluminum foil compound paper (for gifts and arts & crafts)

Compound cartons:

- drink cartons (juice/milk/tea/etc.)
- sauce/cream cartons
- frozen food cartons

Plastic packaging:

- candy wrappers
- Plastic bags
- Plastic bottles (without deposit)
- Yogurt/cream/ice cream cups

Styrofoam:

- Clean styrofoam used for packaging and packing peanuts
- Food trays and cups

Gelbe Sack are not available for the county of NEA/BW. Residents must take their plastic to the recycling center. This works more efficiently if you separate different kinds of plastic (PET, PE, PP/PS). Each Plastic packing has a logo identifying the type of plastic material. See pictures on the left.

PET bottles



PE bottles/tubes



PP/PS cups + packing



10 Organic Waste at Housing -on post-



- kitchen scraps, sausage, cheese
- bones, fishbones, meat and fish
- eggshells
- banana peels, orange peels, etc...
- coffee filter, coffee grounds, tea and teabags
- grass clippings, garden mulch greenery, plant roots, decayed plants and shrubs
- paper towels, napkins, soil

Bio Paper bags are available at the on post Recycling Center, bldg 9024. **Organic waste collection is available currently only at Urtas Village and duplex/single houses at Katterbach and Barton.**

Disposal of Kitchen Grease/Oil



Grease/Oil container to find in the Recycling Ctr



- Wipe pan before washing
- Place oil in container for disposal:
 - cool oil before disposing
- Household Disposal:
 - at Recycling Centers

Benefit to the Garrison Ansbach:
Reimbursement for Grease/oil **\$175 per ton** if you bring it to the Recycling Center for disposal.

Do NOT dispose of your grease/oil or any other food into the kitchen drain or toilet!

- Will clog pipes
- Attracts pest/rodents
- Generates high repair cost to exchange pipes

What's left for your trash can? -on post- 11

Everything that is not metal, plastic, glass or paper!

Refuse/trash is not allowed to be brought on-post for disposal.

Off-post trash disposal is part of your monthly housing allowance.



Examples:

- vacuum cleaner bags, sweepings
- chewing gum, cigarette butts
- personal hygiene products
- pens, pencils, crayons, pen refills
- VHS tapes, music tapes
- elastic bands, rubber gloves, galoshes, bicycle tubes
- foam materials, sealant, wallpaper
- regular light bulbs
- diapers

Your Recycling Point of Contact in Ansbach - Katterbach

DPW Operation and Maintenance Division

Monday - Friday 0730 - 1200
and 1230 - 1600

Closed on American & German Holidays

Bismarck Kaserne Katterbach
Building 5843 A
91522 Ansbach

phone: DSN 467-3403

phone: CIV 09802-83-3403

<http://www.ansbach.army.mil/recycling.html>



16 Plastics Packaging materials-off post- City/ County of Ansbach

compound
cartons - Tetra Pack



All plastic material (with a green dot) must be separated from regular trash and put into the yellow plastic bags.

Yellow bags are only to be used off-post within the city/county of Ansbach!

PET bottles



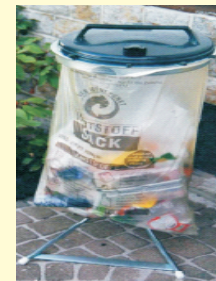
PE bottles/tubes



PP/PS cups
+ packing



- **compound cartons/tetrapack:**
 - drink cartons (juice/milk/tea, etc.)
 - sauce/cream cartons
 - frozen food cartons (ice cream)
- **plastic packaging:**
 - plastic bags, wraps
 - candy wrappers, potato chip bags
 - plastic bottles (without deposit)
 - yogurt/cream/ice cream cups
 - Styrofoam food trays and cups
- **clean styrofoam** used for packaging and styrofoam peanuts



You can get yellow bags (gelbe sack) at your local Rathaus (Town Hall) or ask your landlord for help.

Containers for Glass Recycling -off post- 15



Please sort by color!

Green containers are for green and other colored glass, White containers are for white or clear glass, and Brown containers are for brown glass.

- Glass food jars
- juice bottles
- liquor bottles
- soda/beer bottles (without deposit)
- wine bottles
- drinking glasses



Separating glass by color is necessary & economically efficient for the recycling process. Recycling trucks have separate compartments for each color.

Note: Stoneware, porcelain, and pottery are not accepted in the glass containers. Please take these items to the German recycling center.

12 Recycling for Off-Post Residents County NEA/BW



Recycling Centers in Bad Windsheim, Burgbernheim and Uffenheim welcome their off-post American neighbors.

See page 4 for materials accepted at the Recycling centers.

German Recycling Centers You are welcome!

Bad Windsheim Walkmühle 8 Tel: 09841-3995	Mon-Thu Wed Fri Sat	0900-1300 1700-1900 1100-1700 0900-1300
Burgbernheim Aumühlweg Tel: 09843-2772	Mon Tue&Thu Fri Sat	0900-1200 0900-1300 1300-1800 0900-1200
Neustadt/Aisch Raiffeisenstr. 11 Tel: 09161-9477	Mon-Wed Thu Fri Sat	0900-1300 0900-1300 1700-1900 1100-1600 0900-1300
Uffenheim Buchenweg 3 (Near Kreisbauhof on road B13) Tel: 09842-953570	Mon Tue&Wed Fri Sat	0830-1230 0830-1230 1300-1700 0830-1700 0830-1230
Recycle Center Dettendorf Deponiestr 1 91456 Diespeck Tel: 09161876793	Mon-Wed Thu Fri Sat	0830-1230& 1330-1600 1330-1830 0830-1230& 1330-1600 0800-1100

County of Neustadt/Aisch - Bad Windsheim has not introduced the "Yellow Bag" for plastic disposal, which is found in many other German counties. Thus, deliver your plastic recyclables to one of the above listed German Recycling Centers.

Recycling for Off-Post Residents 13



Bleidorn residents are encouraged to deliver their bulk trash to the off post Ansbach Recycling Center.

German Recycling Center "WERTSTOFF HOF"

Location:

Adalbert-Pilipp-Str 48
91522 Ansbach
Ph: 0981-94647
(near Pilipp furniture store)

Hours:

Tue 0900 - 1700
Wed 0900 - 1200
Thu 0900 - 1800
Fri 0900 - 1500
Sat 0800 - 1200

**Hazardous waste will only be accepted
Thursday 1300-1800 and
Saturday 0800 -1200**

If you don't have these three containers - contact your landlord.

In the city and county of Ansbach, the following waste containers should be at each house/apartment:

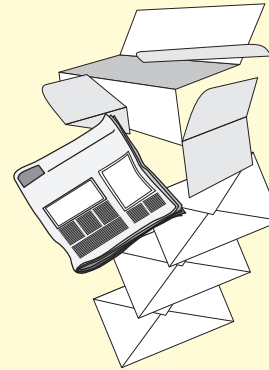
1 Black bin for refuse/trash;
1 Green bin for paper and cardboard;
1 Brown bin for bio/organic waste;
Yellow bags (gelber sack) for plastic items;
Recycling collection points for glass bottles and cans/aluminum are located throughout the community.

A list of German recycling centers within the county of Ansbach can be found at the following link: <http://www.ansbach.army.mil/recycling.html>

14 Paper and Cardboard -off post-

Only Clean Paper is Recyclable!

- all kinds of notepaper
- computer paper
- envelopes
- colored paper
- brown paper bags
- flattened cardboard
- newspapers
- junk mail
- magazines, books
- paper towels, not soiled
- Wrapping paper, Packing Paper
- Cereal Boxes, Shoe Boxes
- Pizza Boxes
- Egg Cartons



Green paper bins are available at each household off-post.



Soiled paper towels and napkins are considered organic waste, and may be thrown in organic waste bins to soak up liquids.

Please note:

Milk and juice cartons are considered plastic. Do NOT put milk & juice cartons and other compound materials in the paper container. Plastics go off post to recycling centers or in the yellow bags (gelbe sack).

