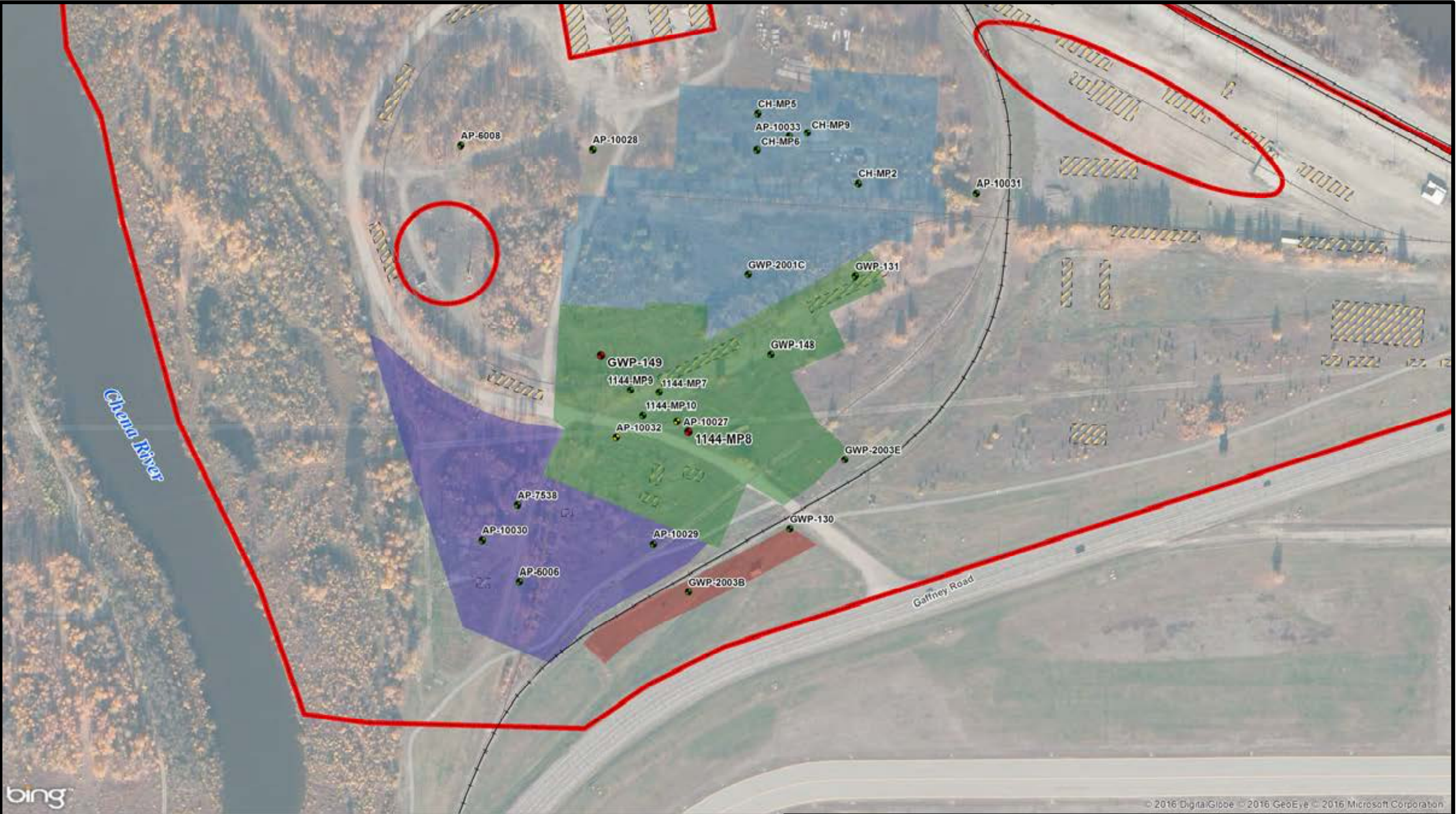
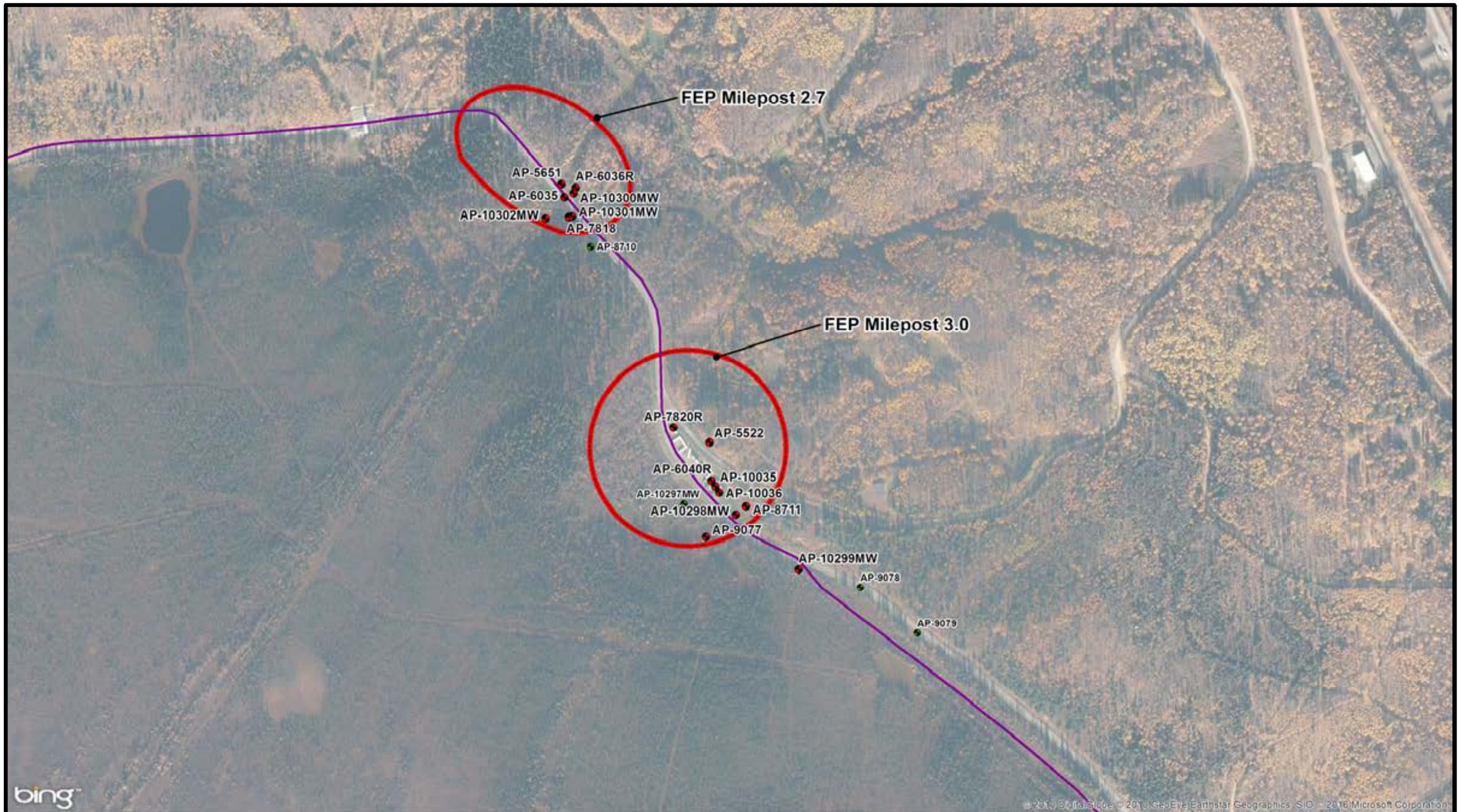


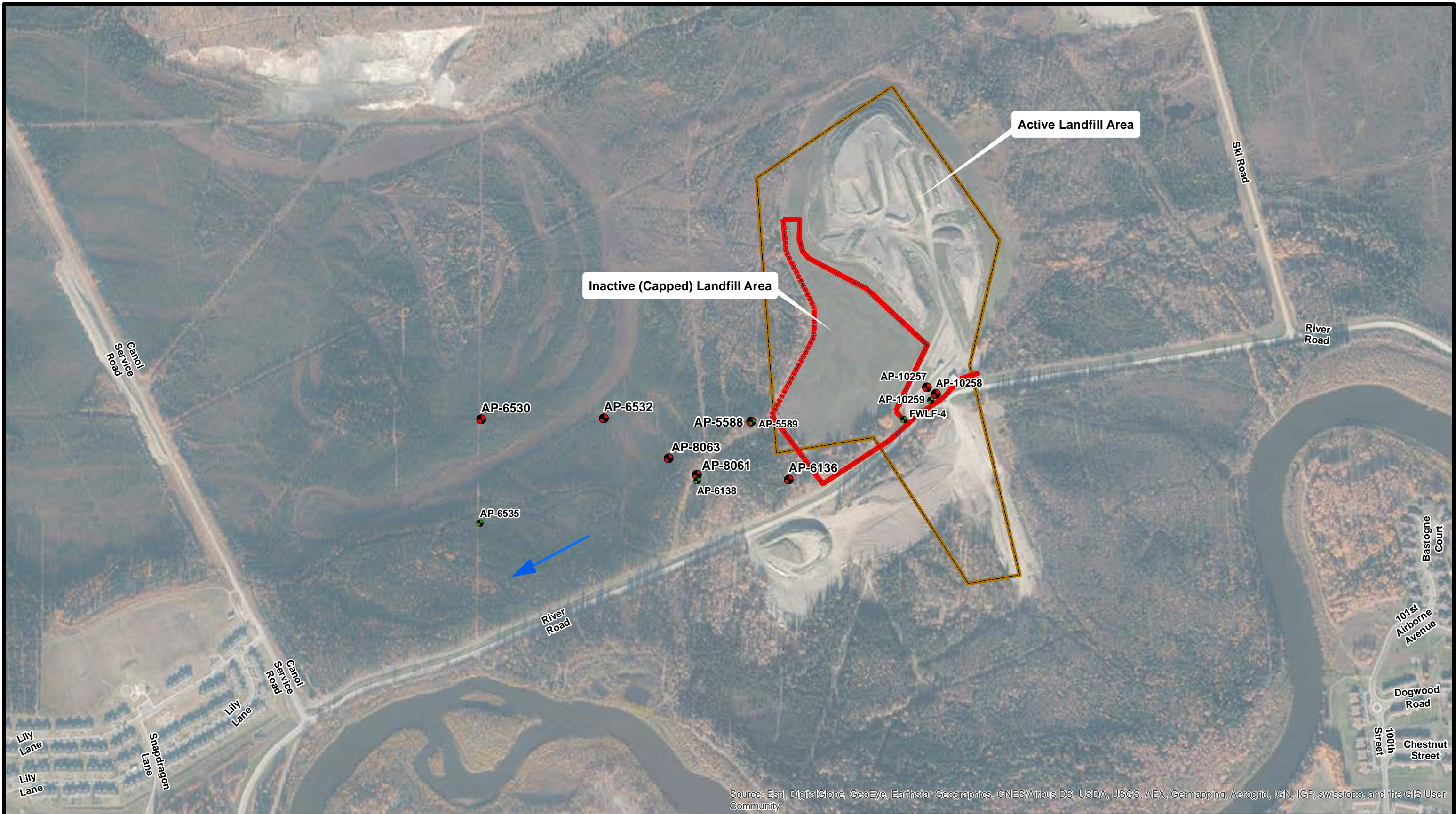
<p>ROD Cleanup Level (ug/L)</p> <p>Benzene 5</p> <p>Toluene 1,000</p> <p>Ethylbenzene 700</p> <p>1,2-EDB 0.05</p> <p>1,2-DCA 5</p> <p>1,2,4-TMB 1850</p> <p>1,3,5-TMB 1850</p>	<p>● Exceeds ROD Cleanup Levels</p> <p>● Does Not Exceed ROD Cleanup Levels</p> <p>● Not Included in 2015 Sampling Event</p> <p>— Active Railroad - Single</p>	<p>— Dismantled Railroad</p> <p>■ Institutional Control Boundary</p> <p>■ Valve Pit A</p> <p>■ Valve Pit B</p>	<p>■ Valve Pit C</p> <p>■ Demolished Structure</p> <p>0 75 150 300 Feet</p> <p>North Arrow</p>	<p>U.S. Army Corps of Engineers</p> <p>Buffalo, New York</p> <p>Document Name: FWAOU3_PITABC_201511.mxd</p> <p>Drawn By: HSTDEEMP</p> <p>Date Saved: 23 Aug 2016</p> <p>Time Saved: 8:38:45 AM</p>	<p>OU-3 Valve Pits A, B, and C Site Features</p> <p>United States Army Garrison</p> <p>Fort Wainwright, Alaska</p>	<p>Figure 5-5</p>
---	--	--	--	---	---	-------------------



<p>ROD Cleanup Level (ug/L)</p> <table><tr><td>Benzene</td><td>5</td></tr><tr><td>Toluene</td><td>1,000</td></tr><tr><td>Ethylbenzene</td><td>700</td></tr><tr><td>1,2-EDB</td><td>0.05</td></tr><tr><td>1,2-DCA</td><td>5</td></tr><tr><td>1,2,4-TMB</td><td>1850</td></tr><tr><td>1,3,5-TMB</td><td>1850</td></tr></table>	Benzene	5	Toluene	1,000	Ethylbenzene	700	1,2-EDB	0.05	1,2-DCA	5	1,2,4-TMB	1850	1,3,5-TMB	1850	<table><tr><td></td><td>2014 Groundwater Sampling Results Exceed ROD Cleanup Levels</td><td></td><td>Eight Car Header Treatment System</td></tr><tr><td></td><td>2014 Groundwater Sampling Results Do Not Exceed ROD Cleanup Levels</td><td></td><td>Former Building 1144 Treatment System</td></tr><tr><td></td><td>Not Included in 2014 Sampling Event</td><td></td><td>Upgradient Area Treatment System</td></tr><tr><td></td><td>Active Railroad - Single</td><td></td><td>Institutional Control Boundary</td></tr><tr><td></td><td>Dismantled Railroad</td><td></td><td>Demolished Structure</td></tr><tr><td></td><td>Central Header Treatment System</td><td></td><td></td></tr></table> <div></div>		2014 Groundwater Sampling Results Exceed ROD Cleanup Levels		Eight Car Header Treatment System		2014 Groundwater Sampling Results Do Not Exceed ROD Cleanup Levels		Former Building 1144 Treatment System		Not Included in 2014 Sampling Event		Upgradient Area Treatment System		Active Railroad - Single		Institutional Control Boundary		Dismantled Railroad		Demolished Structure		Central Header Treatment System			<div><p>U.S. Army Corps of Engineers Buffalo, New York</p></div> <div><p>Document Name: FWA_OU3_ROLF_201511.mxd Drawn By: H5TDEEMP Date Saved: 23 Aug 2016 Time Saved: 7:52:17 AM</p></div>	<p>OU-3 ROLF Site Features</p> <p>United States Army Garrison Fort Wainwright, Alaska</p>	<p>Figure 5-6</p>
Benzene	5																																									
Toluene	1,000																																									
Ethylbenzene	700																																									
1,2-EDB	0.05																																									
1,2-DCA	5																																									
1,2,4-TMB	1850																																									
1,3,5-TMB	1850																																									
	2014 Groundwater Sampling Results Exceed ROD Cleanup Levels		Eight Car Header Treatment System																																							
	2014 Groundwater Sampling Results Do Not Exceed ROD Cleanup Levels		Former Building 1144 Treatment System																																							
	Not Included in 2014 Sampling Event		Upgradient Area Treatment System																																							
	Active Railroad - Single		Institutional Control Boundary																																							
	Dismantled Railroad		Demolished Structure																																							
	Central Header Treatment System																																									



<div>ROD Cleanup Level (ug/L)</div> <div><div>Benzene</div><div>5</div></div> <div><div>Toluene</div><div>1,000</div></div> <div><div>Ethylbenzene</div><div>700</div></div> <div><div>1,2-EDB</div><div>0.05</div></div> <div><div>1,2-DCA</div><div>5</div></div> <div><div>1,2,4-TMB</div><div>1850</div></div> <div><div>1,3,5-TMB</div><div>1850</div></div>	<div><div><div><div></div></div></div><div>2015 Groundwater Sampling Results Exceed ROD Cleanup Levels</div></div> <div><div><div><div></div></div></div><div>2015 Groundwater Sampling Results Do Not Exceed ROD Cleanup Levels</div></div> <div><div><div><div></div></div></div><div>Not Included in 2015 Sampling Event</div></div> <div><div><div><div></div></div></div><div>Fairbanks-Eielson Pipeline</div></div> <div><div><div><div></div></div></div><div>Institutional Control Boundary</div></div>	<div><div><div><div></div></div><div>U.S. Army Corps of Engineers</div><div>US Army Corps of Engineers</div><div>Buffalo District</div></div><div>Buffalo, New York</div></div> <div><div>Document Name: FWA_OU3_MP27_30_20151.mxd</div><div>Drawn By: H5TDEEMP</div><div>Date Saved: 23 Aug 2016</div><div>Time Saved: 7:31:42 AM</div></div>	<div>OU-3 Mileposts 2.7 and 3.0 Site Features</div> <div><div>United States Army Garrison</div><div>Fort Wainwright, Alaska</div></div> <div>Figure 5-7</div>	
---	---	--	---	--

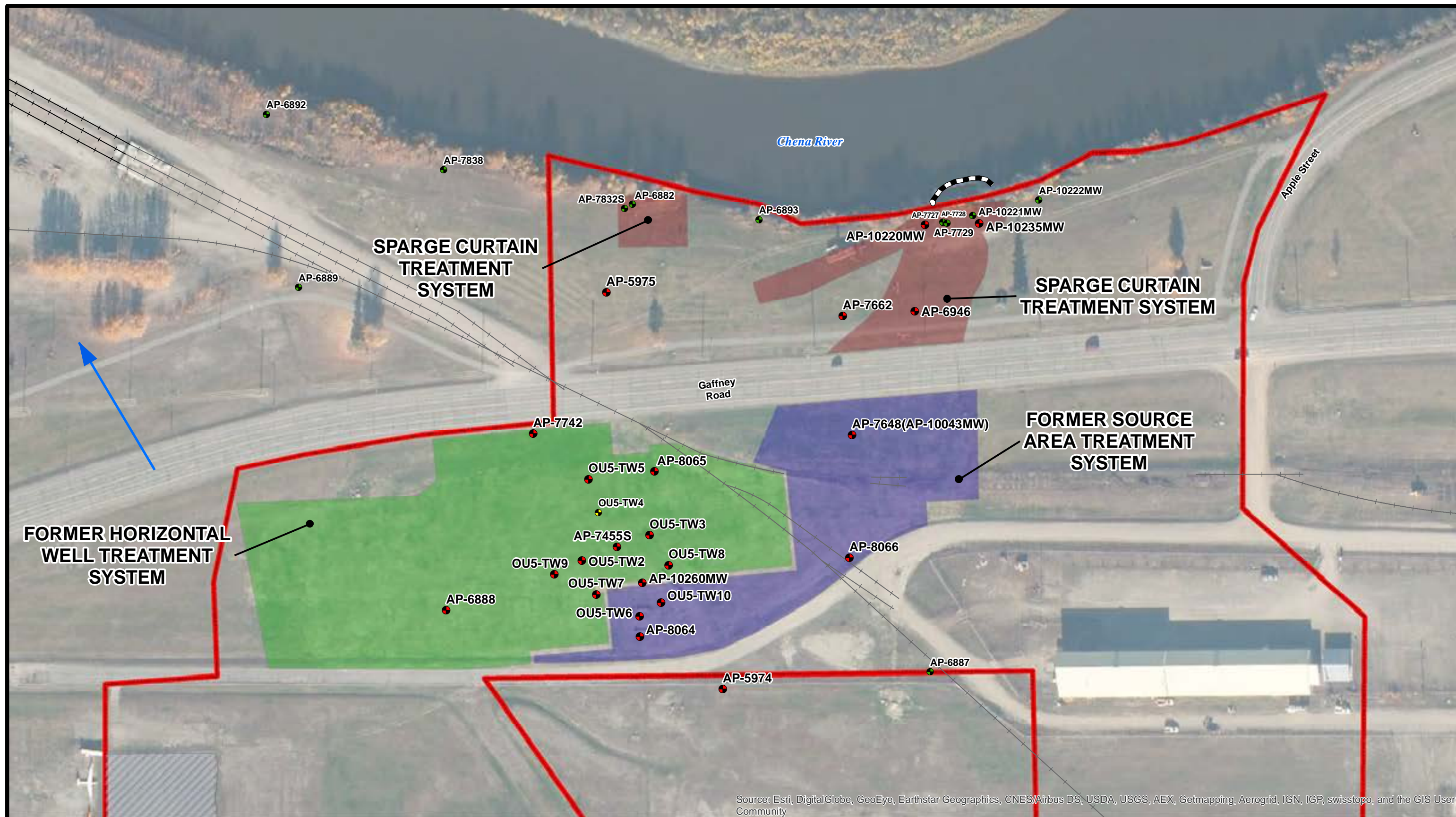


Source: Esri, DigitalGlobe, GeoEye, Earthstar Geographics, CNES/Airbus DS, USDA, USGS, AEX, Getmapping, Aerogrid, IGN, IGP, swisstopo, and the GIS User Community

ROD Cleanup Level (ug/L) Benzene 5 cis-1,2-DCE 70 1,1,2,2-PCA 5.2 1,1,2-TCA 5 TCE 5 Vinyl Chloride 2 bis(2-ethylhexyl) Phthalate 6	<ul style="list-style-type: none">● 2014 Groundwater Sampling Results Exceed ROD Cleanup Levels● 2014 Groundwater Sampling Results Do Not Exceed ROD Cleanup Levels— Institutional Control Boundary→ Approximate Groundwater Flow Direction Landfill Area <div style="text-align: center;"> </div>	<div>U.S. Army Corps of Engineers US Army Corps of Engineers Buffalo District</div> <div>Buffalo, New York</div> <div>Document Name: FWA_OU4_Land_201512.mxd Drawn By: H5TDEEMP Date Saved: 25 Aug 2016 Time Saved: 2:10:25 PM</div>	<div style="text-align: center;">OU-4 Landfill Site Features</div> <div>United States Army Garrison Fort Wainwright, Alaska</div> <div style="text-align: right;">Figure 5-8</div>	
--	---	--	---	--

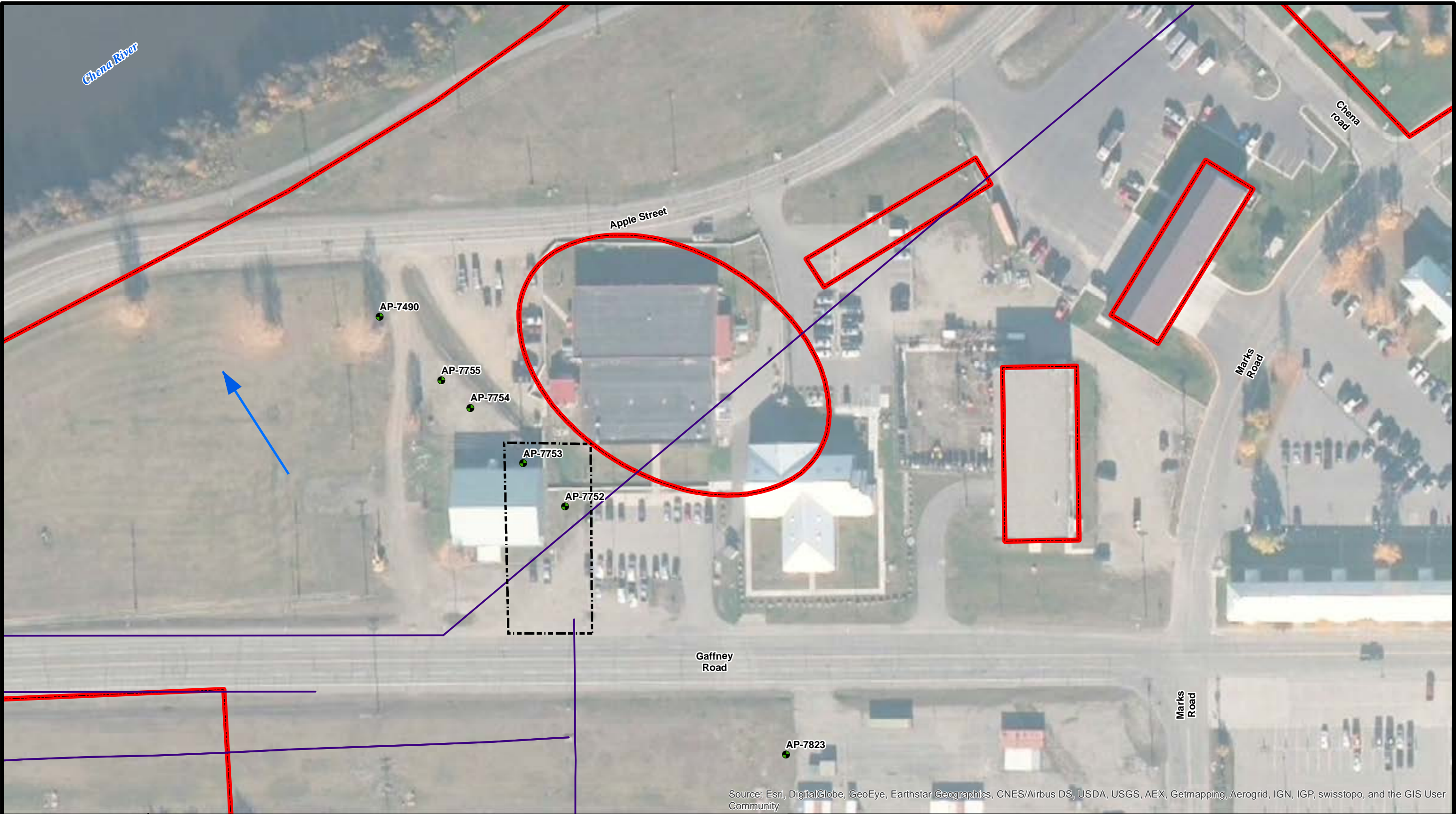


<ul style="list-style-type: none"> ● Domestic Water - In Use — Former AS/SVE Treatment System Boundary —+— Active Railroad - Single 	<ul style="list-style-type: none"> —+— Dismantled Railroad ■ Coal Storage Yd and Bldg 3595 ■ Institutional Control Boundary <div style="text-align: center;"> </div> <div style="text-align: center;"> </div>	<table border="1" style="width: 100%;"> <tr> <td data-bbox="1709 1703 2128 1955" rowspan="2"> <div style="text-align: center;"> U.S. Army Corps of Engineers Buffalo, New York Buffalo District </div> <div> Document Name: FWA_OU4_Coal_201512.mxd Drawn By: H5TDEEMP Date Saved: 23 Aug 2016 Time Saved: 8:02:53 AM </div> </td> <td colspan="2" data-bbox="2128 1703 3061 1955"> <div style="text-align: center;"> OU-4 Coal Storage Yard Site Features </div> <div> United States Army Garrison Fort Wainwright, Alaska </div> </td> </tr> <tr> <td colspan="2" data-bbox="2128 1824 3061 1955" style="text-align: right;"> Figure 5-9 </td> </tr> </table>		<div style="text-align: center;"> U.S. Army Corps of Engineers Buffalo, New York Buffalo District </div> <div> Document Name: FWA_OU4_Coal_201512.mxd Drawn By: H5TDEEMP Date Saved: 23 Aug 2016 Time Saved: 8:02:53 AM </div>	<div style="text-align: center;"> OU-4 Coal Storage Yard Site Features </div> <div> United States Army Garrison Fort Wainwright, Alaska </div>		Figure 5-9	
<div style="text-align: center;"> U.S. Army Corps of Engineers Buffalo, New York Buffalo District </div> <div> Document Name: FWA_OU4_Coal_201512.mxd Drawn By: H5TDEEMP Date Saved: 23 Aug 2016 Time Saved: 8:02:53 AM </div>	<div style="text-align: center;"> OU-4 Coal Storage Yard Site Features </div> <div> United States Army Garrison Fort Wainwright, Alaska </div>							
	Figure 5-9							



Source: Esri, DigitalGlobe, GeoEye, Earthstar Geographics, CNES/Airbus DS, USDA, USGS, AEX, Getmapping, Aerogrid, IGN, IGP, swisstopo, and the GIS User Community

ROD Cleanup Levels (ug/L) DRO 1,500 GRO 2,200 1,2-DCA 5 Benzene 5 Toluene 1,000 TAH 10 TAQH 15 TCE 5	<ul style="list-style-type: none">2015 Groundwater Sampling Results Exceed ROD Cleanup Levels205 Groundwater Sampling Results Do Not Exceed ROD Cleanup LevelNot Included in 2015 SamplingChena River BoomRailroad-ActiveRailroad-Dismantled	<ul style="list-style-type: none">Approximate Groundwater Flow DirectionInstitutional Control BoundaryFORMER HORIZONTAL WELL TREATMENT SYSTEMFORMER SOURCE AREA TREATMENT SYSTEMSPARGE CURTAIN TREATMENT SYSTEM <div><div></div><div>0100200400</div><div>Feet</div></div> <div><div>N</div><div>W</div><div>E</div><div>S</div></div>	<div><div></div><div>U.S. Army Corps of Engineers Buffalo, New York</div></div> <div>Document Name: FWA_OU5WQFS_201511.mxd Drawn By: H5TDEEMP Date Saved: 23 Aug 2016 Time Saved: 8:30:54 AM</div>	<div>OU-5 WQFS Site Features</div> <div>United States Army Garrison Fort Wainwright, Alaska</div>	<div>Figure 5-10</div>
---	---	--	---	--	------------------------



Source: Esri, DigitalGlobe, GeoEye, Earthstar Geographics, CNES/Airbus DS, USDA, USGS, AEX, Getmapping, Aerogrid, IGN, IGP, swisstopo, and the GIS User Community

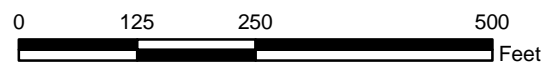
ROD Cleanup Levels (ug/L) DRO 1,500 GRO 2,200 1,2-DCA 5 Benzene 5 Toluene 1,000 TAH 10 TAQH 15 TCE 5	<ul style="list-style-type: none"> 2015 Groundwater Sampling Results Do Not Exceed ROD Cleanup Levels Former AS/SVE Treatment System Approximate Groundwater Flow Direction Fuel Line - Main Institutional Control Boundary	 0 100 200 400 Feet	 U.S. Army Corps of Engineers Buffalo, New York Document Name: FWA_OU5EQFS_201511.mxd Drawn By: H5TDEEMP Date Saved: 23 Aug 2016 Time Saved: 8:24:45 AM	OU-5 EQFS Site Features United States Army Garrison Fort Wainwright, Alaska	Figure 5-11
---	---	------------------------	--	--	-------------




**ROD Cleanup Levels
(mg/kg)**

Lead 1,000

- * Maximum Concentration of Total Lead in Soil Detected at AST Exceeds ROD Cleanup Level
- ⬢ Institutional Control Boundary
- ⬢ Former Above Ground Storage Tank (AST) Locations
- ⬢ Installation Boundary
- Unimproved Road



 **U.S. Army Corps of Engineers**
Buffalo, New York

Document Name: FWA_OU5_BHTFAST_201511.mxd
Drawn By: H5TDEEMP
Date Saved: 23 Aug 2016
Time Saved: 8:15:32 AM

**OU-5 Birch Hill Tank Farm - Above Ground Storage Tanks
Site Features**

United States Army Garrison
Fort Wainwright, Alaska

Figure 5-12

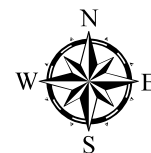


bing

© 2016 Microsoft Corporation



Institutional Control Boundary



Document Name: FWA_OU5_OBOD_201608.mxd
Drawn By: H5TDEEMP
Date Saved: 23 Aug 2016
Time Saved: 10:59:21 AM

OU-5 Open Burning Open Detonation Area Site Features

United States Army Garrison
Fort Wainwright, Alaska

Figure 5 - 13



<p>ROD Cleanup Levels (ug/L)</p> <table border="0"><tr><td>DRO</td><td>1,500</td></tr><tr><td>RRO</td><td>1,100</td></tr><tr><td>Trichloroethene(TCE)</td><td>5</td></tr><tr><td>1,2,3-Trichloropropane(TCP)</td><td>0.12</td></tr></table>	DRO	1,500	RRO	1,100	Trichloroethene(TCE)	5	1,2,3-Trichloropropane(TCP)	0.12	<div><div> Monitoring Well Sampled for MNA Program</div><div> Approximate Groundwater Flow Direction</div><div> Current Structures</div><div> Roads</div></div> <div><div> Institutional Control Boundary</div><div></div><div></div></div>	<div>U.S. Army Corps of Engineers Buffalo District</div> <div>Document Name: FWA_OU6_20160503.mxd Drawn By: H5TDEEMP Date Saved: 23 Jun 2016 Time Saved: 2:32:00 PM</div>	<p>OU-6 Former Communications Site Features</p> <p>United States Army Garrison Fort Wainwright, Alaska</p>	<p>Figure 5-14</p>
DRO	1,500											
RRO	1,100											
Trichloroethene(TCE)	5											
1,2,3-Trichloropropane(TCP)	0.12											