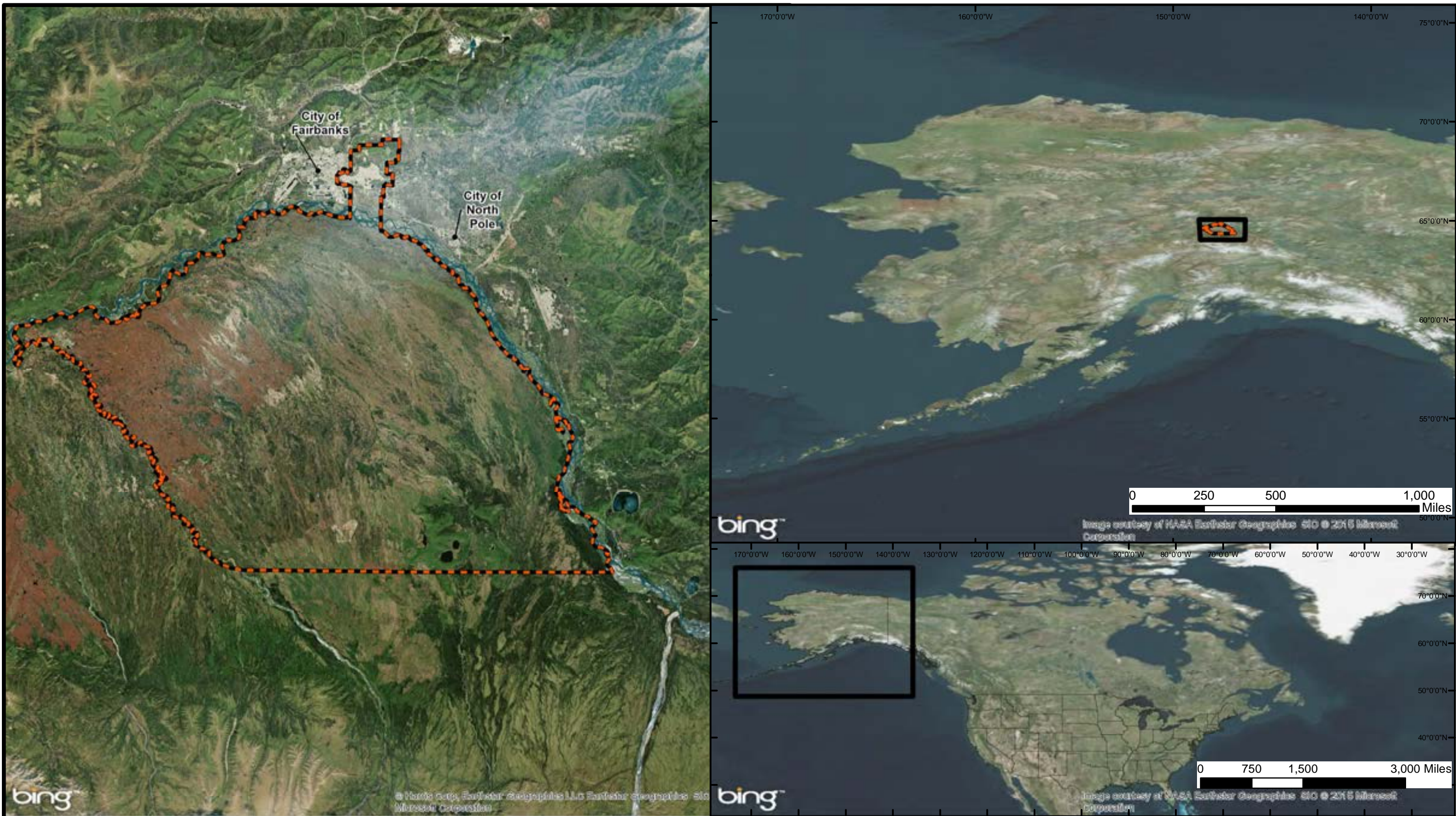



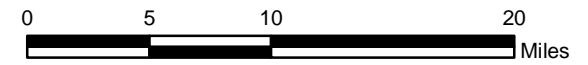
ATTACHMENT 1

Figures

[This page intentionally left blank]



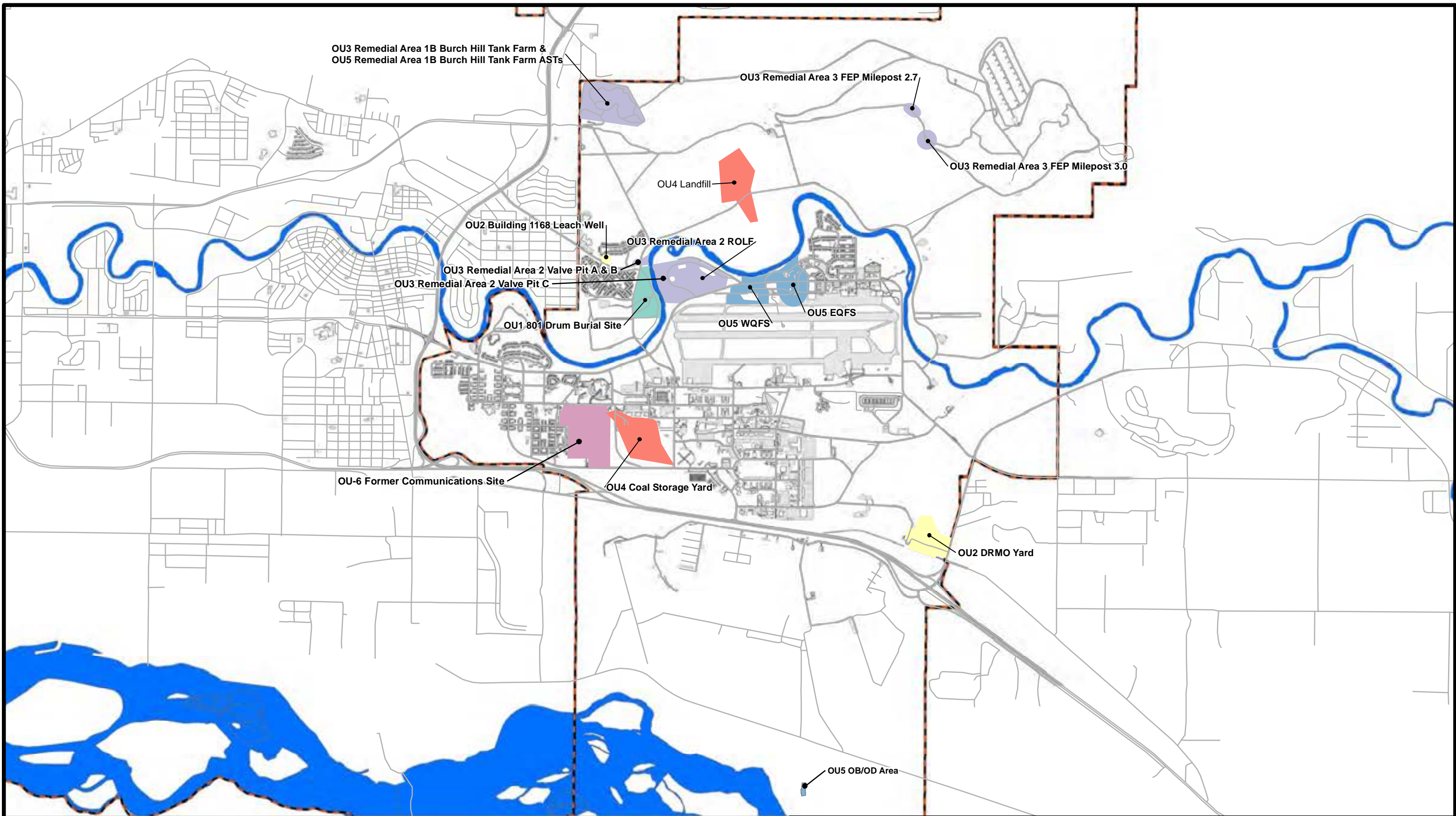
 Installation Boundary



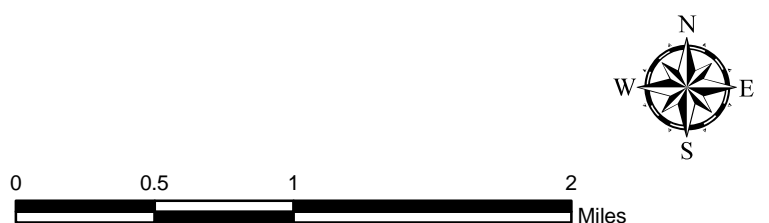
Document Name: FWW_SiteLoc_201512.mxd
Drawn By: H5TDEEMP
Date Saved: 09 Dec 2015
Time Saved: 3:52:44 PM


Fort Wainwright Site Location

United States Army Garrison
Fort Wainwright, Alaska



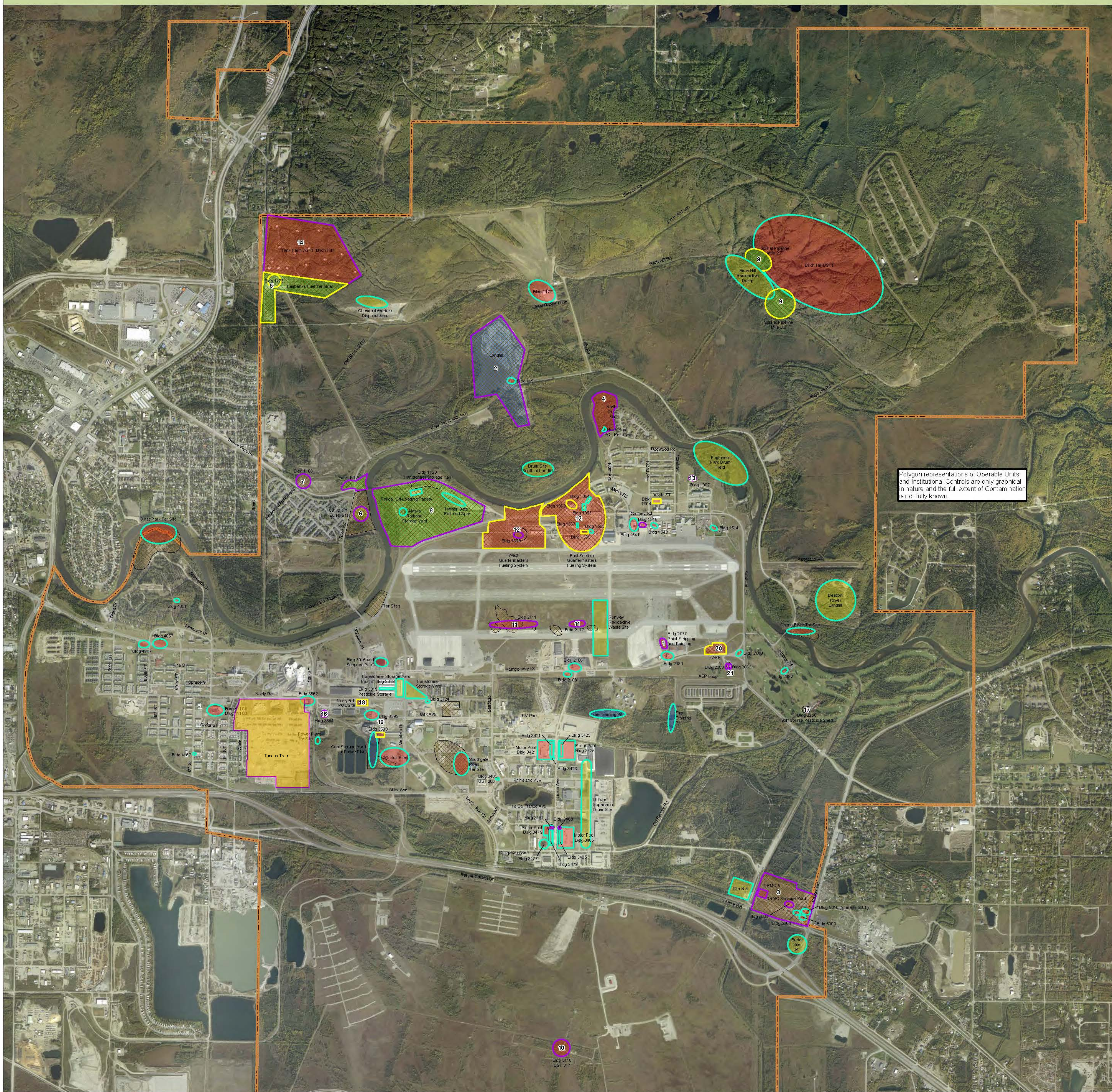
- OU-1
 OU-4
 Installation Boundary
- OU-2
 OU-5
 Surface Water
- OU-3
 OU-6
 Roads




 US Army Corps
 of Engineers
 Buffalo District
 Document Name: FWA_OULoc_201512.mxd
 Drawn By: H5TDEEMP
 Date Saved: 18 Aug 2016
 Time Saved: 10:16:11 AM

Operable Unit Locations		
United States Army Garrison Fort Wainwright, Alaska		Figure 2 - 1

Restoration Sites On Fort Wainwright, AK



Active Restoration Site Summaries

- FTWW-003**
AIRCRAFT MAIN (BUILDING 2077)
RRSE RATING: Low
CONTAMINANTS OF CONCERN: DRO
MEDIA OF CONCERN: Soil, Groundwater
COMPLETED IRP PHASE: PA/SI, R/FS, RD, RA, RA(O)
CURRENT IRP PHASE: LTM
FUTURE IRP PHASE: LTM
- FTWW-038**
FT. WAINWRIGHT LANDFILL PLUME
RRSE RATING: High
CONTAMINANTS OF CONCERN: Solvents
MEDIA OF CONCERN: Groundwater
COMPLETED IRP PHASE: PA/SI, R/FS, RD, RA
CURRENT IRP PHASE: RA(O)
FUTURE IRP PHASE: RA(O)
- FTWW-047**
DRMO SALVAGE YARD
RRSE RATING: High
CONTAMINANTS OF CONCERN: TCE, PCE, POL
MEDIA OF CONCERN: Soil, Groundwater
COMPLETED IRP PHASE: PA/SI, R/FS, RD, RA
CURRENT IRP PHASE: RA(O)
FUTURE IRP PHASE: LTM
- FTWW-050**
NORTH POST SITE
RRSE RATING: Low
CONTAMINANTS OF CONCERN: Benzene, POL Components
MEDIA OF CONCERN: Soil, Groundwater
COMPLETED IRP PHASE: PA/SI, R/FS, IRA, RD, RA, RA(O)
CURRENT IRP PHASE: LTM
FUTURE IRP PHASE: LTM
- FTWW-055**
FAIRBANKS FUEL TERMINAL
RRSE RATING: High
CONTAMINANTS OF CONCERN:
Benzene, Free Product, Solvents, EDB, 1,2 DCA
MEDIA OF CONCERN: Soil, Groundwater
COMPLETED IRP PHASE: PA/SI, R/FS, RD, RA
CURRENT IRP PHASE: RA(O)
FUTURE IRP PHASE: RA(O), LTM
- FTWW-057**
801 DRUM BURIAL SITE
RRSE RATING: High
CONTAMINANTS OF CONCERN: Aldrin, Dieldrin
MEDIA OF CONCERN: Soil, Groundwater
COMPLETED IRP PHASE: PA/SI, R/FS, 4 IRAS, RD, RA
CURRENT IRP PHASE: RA(O)
FUTURE IRP PHASE: RA(O)
- FTWW-072**
OIL WATER SEPARATOR AT BLDG 1168
RRSE RATING: Low
CONTAMINANTS OF CONCERN: DRO
MEDIA OF CONCERN: Soil, Groundwater
COMPLETED IRP PHASE: PA/SI, R/FS, IRA, RD, RA, RA(O)
CURRENT IRP PHASE: LTM
FUTURE IRP PHASE: RC
- FTWW-083**
RAILROAD OFF-LOADING FACILITY
RRSE RATING: High
CONTAMINANTS OF CONCERN: POL
MEDIA OF CONCERN: Soil, Groundwater
COMPLETED IRP PHASE: PA/SI, R/FS, 2 IRAS, RD, RA
CURRENT IRP PHASE: RA(O)
FUTURE IRP PHASE: RA(O), LTM
- FTWW-084**
FAIRBANKS EIELSON PIPELINE SPILLS
RRSE RATING: High
CONTAMINANTS OF CONCERN: POL
MEDIA OF CONCERN: Soil, Groundwater
COMPLETED IRP PHASE: PA/SI, R/FS, 2 IRAS, RD, RA
CURRENT IRP PHASE: RA(O)
FUTURE IRP PHASE: RA(O)
- FTWW-085**
UST, BLDG 5110
RRSE RATING: Low
CONTAMINANTS OF CONCERN: DRO, BTEX
MEDIA OF CONCERN: Soil, Groundwater
COMPLETED IRP PHASE: PA/SI, R/FS, 3 IRAS, RD, RA, RA(O)
CURRENT IRP PHASE: LTM
FUTURE IRP PHASE: LTM
- FTWW-087**
UST, BLDG 2111 & 2112
RRSE RATING: Medium
CONTAMINANTS OF CONCERN: POL
MEDIA OF CONCERN: Soil, Groundwater
COMPLETED IRP PHASE: PA/SI, R/FS, 3 IRAS, RA
CURRENT IRP PHASE: RA(O)
FUTURE IRP PHASE: LTM
- FTWW-084**
FORMER QUARTERMASTERS FUELING SYSTEM EAST/WEST
RRSE RATING: High
CONTAMINANTS OF CONCERN:
POL, Benzene, 1,2DCA, EDB
MEDIA OF CONCERN: Soil, Groundwater
COMPLETED IRP PHASE: PA/SI, R/FS, 2 IRAS, RD, RA
CURRENT IRP PHASE: RA(O)
FUTURE IRP PHASE: LTM
- FTWW-095**
UST, BLDG 1002
RRSE RATING: Low
CONTAMINANTS OF CONCERN: Benzene
MEDIA OF CONCERN: Groundwater
COMPLETED IRP PHASE: PA/SI, R/FS, IRA, RD, RA, RA(O)
CURRENT IRP PHASE: LTM
FUTURE IRP PHASE: LTM
- FTWW-096**
BIRCH HILL ASTS
RRSE RATING: Medium
CONTAMINANTS OF CONCERN: Lead, PCL
MEDIA OF CONCERN: Soil
COMPLETED IRP PHASE: PA/SI, R/FS, RA, RA(O)
CURRENT IRP PHASE: LTM
FUTURE IRP PHASE: LTM
- FTWW-097**
UST, BLDG 1168
RRSE RATING: Low
CONTAMINANTS OF CONCERN: POL
MEDIA OF CONCERN: Groundwater
COMPLETED IRP PHASE: PA/SI, R/FS, IRA, RD, RA, RA(O)
CURRENT IRP PHASE: LTM
FUTURE IRP PHASE: LTM
- FTWW-099**
UST, BLDG 2964 (UST 283, 284)
RRSE RATING: Medium
CONTAMINANTS OF CONCERN:
Benzene, GRO, DRO, BTEX
MEDIA OF CONCERN: Soil, Groundwater
COMPLETED IRP PHASE: PA/SI, R/FS, IRA, RA, RA(O)
CURRENT IRP PHASE: LTM
FUTURE IRP PHASE: LTM
- FTWW-100**
UST, BLDG 2250
RRSE RATING: Low
CONTAMINANTS OF CONCERN: DRO
MEDIA OF CONCERN: Soil, Groundwater
COMPLETED IRP PHASE: PA/SI, R/FS, 2 IRAS, RA, RA(O)
CURRENT IRP PHASE: LTM
FUTURE IRP PHASE: LTM
- FTWW-101**
NEELY ROAD POL POINT
RRSE RATING: High
CONTAMINANTS OF CONCERN: Benzene, DRO, GRO, BTEX
MEDIA OF CONCERN: Soil, Groundwater
COMPLETED IRP PHASE: PA
CURRENT IRP PHASE: LTM (funded), RA
FUTURE IRP PHASE: RA(O), LTM

Compliance Clean-Up Site Summaries

- FTWWCC-01**
BLDG 3598/3596 SITE
CONTAMINANTS OF CONCERN: POL
MEDIA OF CONCERN: Soil, Groundwater
SITE TYPE: UST
LAND USE: Industrial
COMPLETED PHASE: PA/SI
CURRENT PHASE: R/FS
FUTURE PHASE: RA, RA(O)
- FTWWCC-02**
FORWARD AIR REFUELING POINT (FARP)
CONTAMINANTS OF CONCERN: Unknown
MEDIA OF CONCERN: Unknown
SITE TYPE: AST
LAND USE: Industrial
COMPLETED PHASE: N/A
CURRENT PHASE: N/A
FUTURE PHASE: N/A
- FTWWCC-03**
VET CLINIC/BOAT SHOP (BLDG 2062/2063)
CONTAMINANTS OF CONCERN: POL
MEDIA OF CONCERN: Soil, Groundwater
SITE TYPE: UST
LAND USE: Industrial
COMPLETED PHASE: PA/SI, RI
CURRENT PHASE: LTM
FUTURE PHASE: LTM

Acronyms and Abbreviations Used:
Preliminary Assessment (PA), Remedial Action (RA), Remedial Action Operation (RAO), Remedial Design (RD), Remedial Investigation (RI), Site Inspection (SI), Heron Remedial Action (RA), Installation Restoration Program (IRP), Feasibility Study (FS), Volatile Organic Compounds (VOC)

Synopsis From Fort Wainwright Installation Action Plan FY05

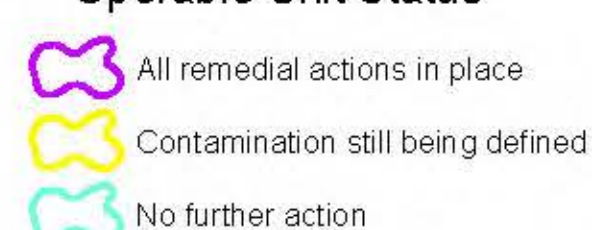
Operable Units

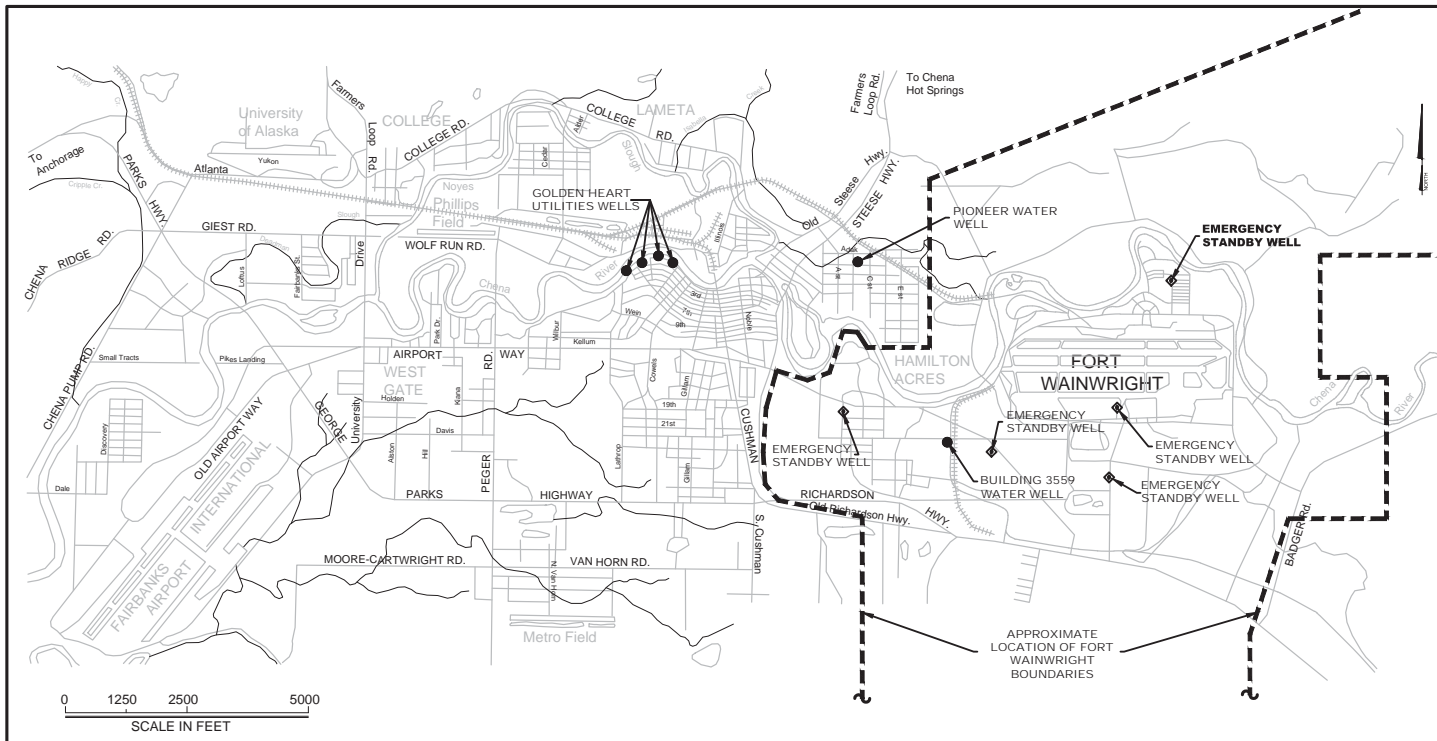


Legend

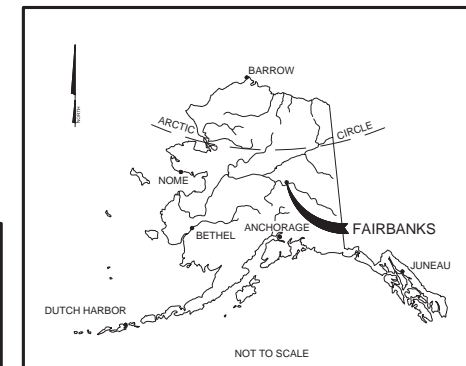


Operable Unit Status

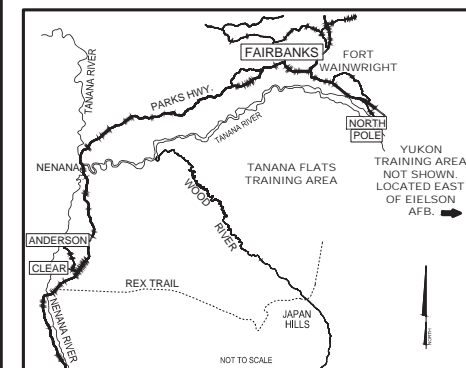




Fairbanks and Fort Wainwright Site Map



Location Map



Vicinity Map

Fort Wainwright and Surrounding Areas






Five Year Review
Fort Wainwright, Alaska

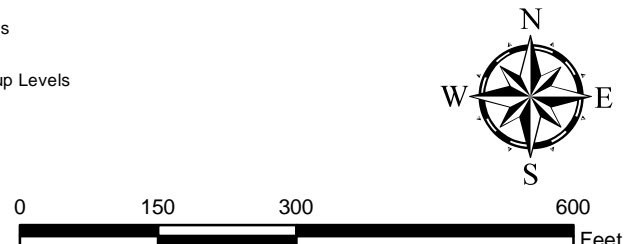
FIGURE: 3-1 DATE: 9/11


Document Path: C:\Users\H5TDEEMP\Documents\Wainwright\GIS\Files\OU1_801_201511.mxd



ROD Cleanup Level (µg/L)	
Benzene	5
1,1-Dichloroethene	7
cis-1,2-Dichloroethene	70
Vinyl Chloride	2
Dieldrin	0.004
DRO	1,500
ADEC Cleanup Level (µg/L)	
Dieldrin	0.05

-  2015 Groundwater Sampling Results Exceed ROD Cleanup Levels
-  2015 Groundwater Sampling Results Do Not Exceed ROD Cleanup Levels
-  Not Included in 2015 Sampling Event
-  Underground Storm Sewer
-  Institutional Control Boundary



**U.S. Army Corps of Engineers**
Buffalo, New York

Document Name: FWA_OU1_801_201511.mxd
Drawn By: H5TDEEMP
Date Saved: 31 Oct 2016
Time Saved: 8:25:26 AM

OU-1 801 Drum Burial Site Features

United States Army Garrison
Fort Wainwright, Alaska

FIGURE 5-1

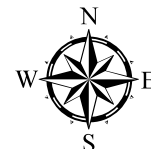
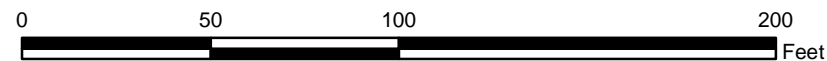


© 2016 DigitalGlobe © 2016 GeoEye © 2016 Microsoft Corporation

**ROD Cleanup Level
(ug/L)**

Benzene	5
PCE	5
TCE	5
1,1-Dichloroethene	7
cis-1,2-Dichloroethene	70
Vinyl Chloride	2

- 2015 Groundwater Sampling Results Exceed ROD Cleanup Levels
- 2015 Groundwater Sampling Results Do Not Exceed ROD Cleanup Levels
- Not Included in 2015 Sampling Event
- Approximate Groundwater Flow Direction
- Former Building 1168
- Active Railroad - Single
- ⊕ Institutional Control Boundary



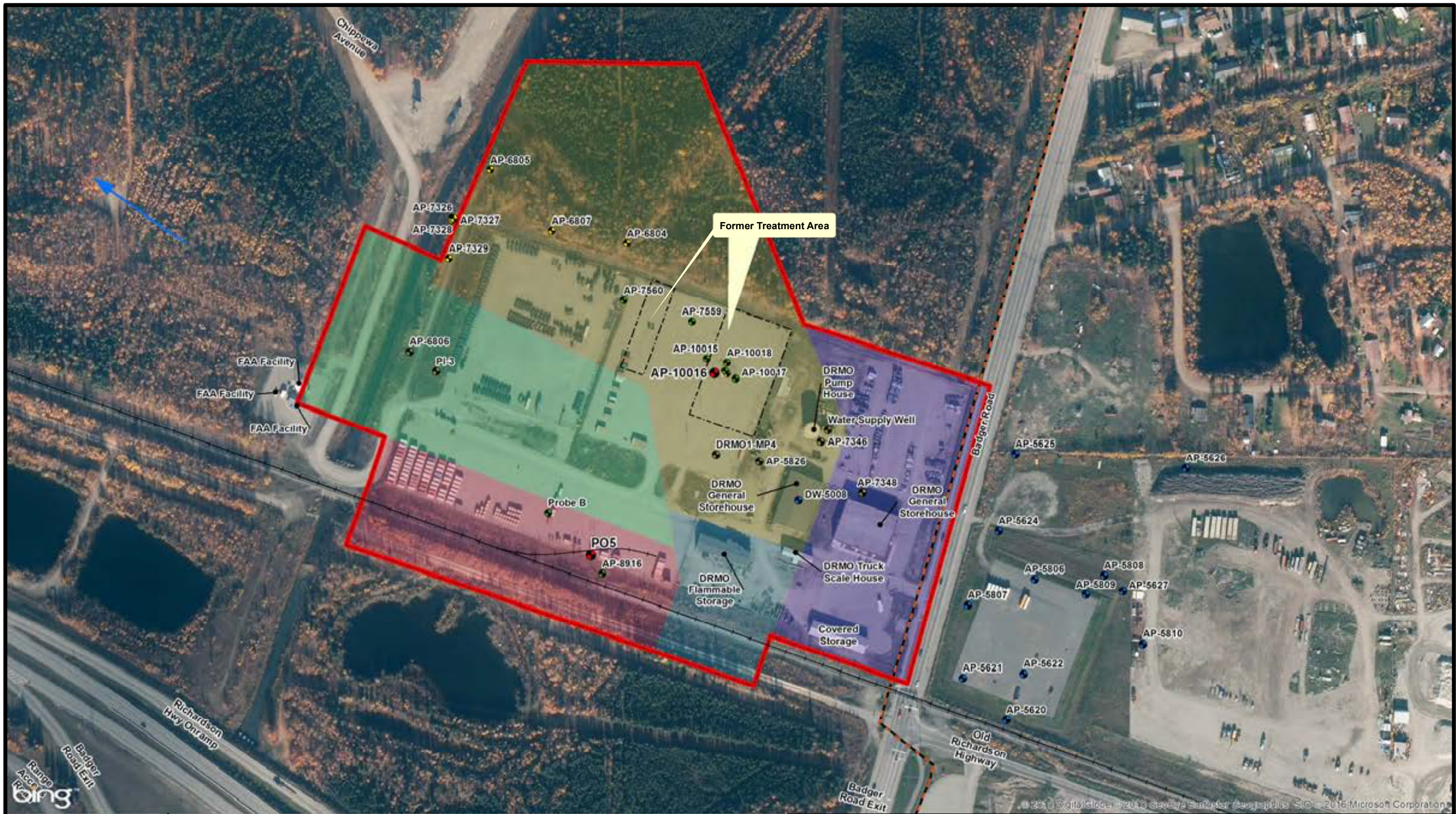
U.S. Army Corps of Engineers
US Army Corps of Engineers
Buffalo District
Buffalo, New York

Document Name: FWA_OU2_1168_201511.mxd
Drawn By: H5TDEEMP
Date Saved: 22 Aug 2016
Time Saved: 3:44:55 PM

OU-2 Former Building 1168 Site Features

United States Army Garrison
Fort Wainwright, Alaska

Figure 5-2



ROD Cleanup Level (µg/L) Benzene 5 PCE 5 TCE 5 1,1-Dichloroethene 7 cis-1,2-Dichloroethene 70 Vinyl Chloride 2	<ul style="list-style-type: none">2015 Groundwater Sampling Results Exceed ROD Cleanup Levels2015 Groundwater Sampling Results Do Not Exceed ROD Cleanup LevelsNot Included in 2015 Sampling2-Party Groundwater Monitoring WellDomestic Water WellApproximate Groundwater Flow DirectionActive Railroad - Single	<ul style="list-style-type: none">Institutional Control BoundarySubarea DRMO1Subarea DRMO2Subarea DRMO3Subarea DRMO4Subarea DRMO5Installation Boundary	<div>0 125 250 500 Feet</div> <div></div>	<div> U.S. Army Corps of Engineers US Army Corps of Engineers Buffalo District</div> <div>Document Name: FWA_OU2DRMO_201511.mxd Drawn By: HSTDEEMP Date Saved: 22 Aug 2016 Time Saved: 4:44:58 PM</div>	<div>OU-2 DRMO Subareas and Site Features</div> <div>United States Army Garrison Fort Wainwright, Alaska</div>	<div>Figure 5-3</div>
---	--	--	---	--	---	-----------------------